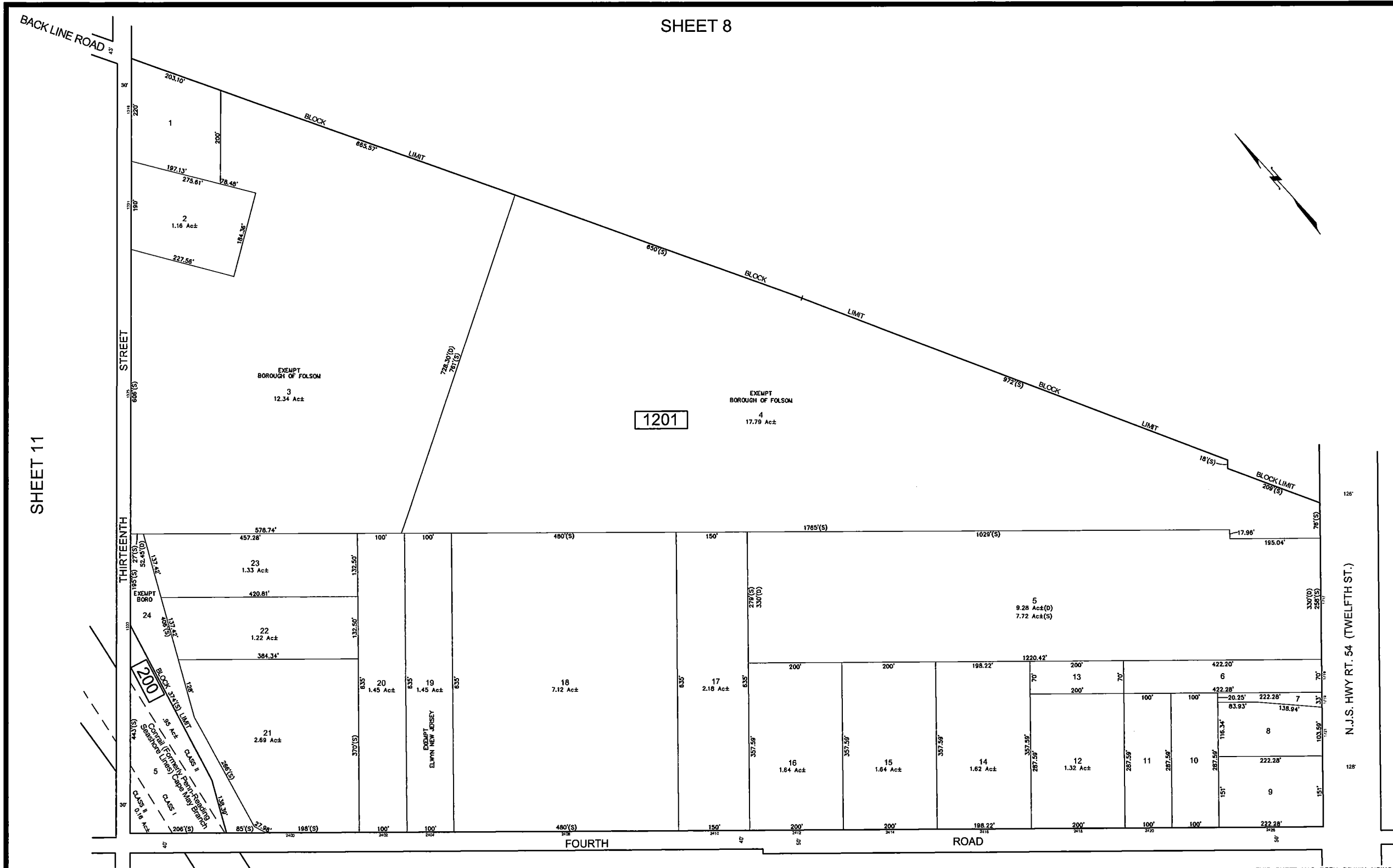


SHEET 8



SHEET 11

SHEET 14

1201

REVISIONS				
DATE	BY	LIC. NO.	BLOCK	LOT

SHEET 22

* THIS SHEET HAS BEEN DRAWN USING COMPUTER AIDED DRAFTING/ DESIGN (CAD/D) AND COORDINATE GEOMETRY (COCO).

THIS MAP WAS FORMALLY
 CERTIFIED BY THE
 DIVISION OF TAXATION ON
 SEPTEMBER 9, 2016, SIGNED
 BY JUDY MILLER, CTA &
 SHELLY REILLY, CTA AND
 ASSIGNED SERIAL NUMBER 1073

TAX MAP
BOROUGH OF FOLSOM

ATLANTIC COUNTY
 SCALE: 1" = 100'

NEW JERSEY
 DATE: SEPTEMBER 2016

ED CLAY
 LICENSED LAND SURVEYOR
 NEW JERSEY LICENSE NO. 34842
 650 SO. WHITE HORSE PKE
 HAMMONTON, NEW JERSEY 08007
 COAR 24GAZ7973300

TO SHOW CONDITIONS AS OF JUNE 2016