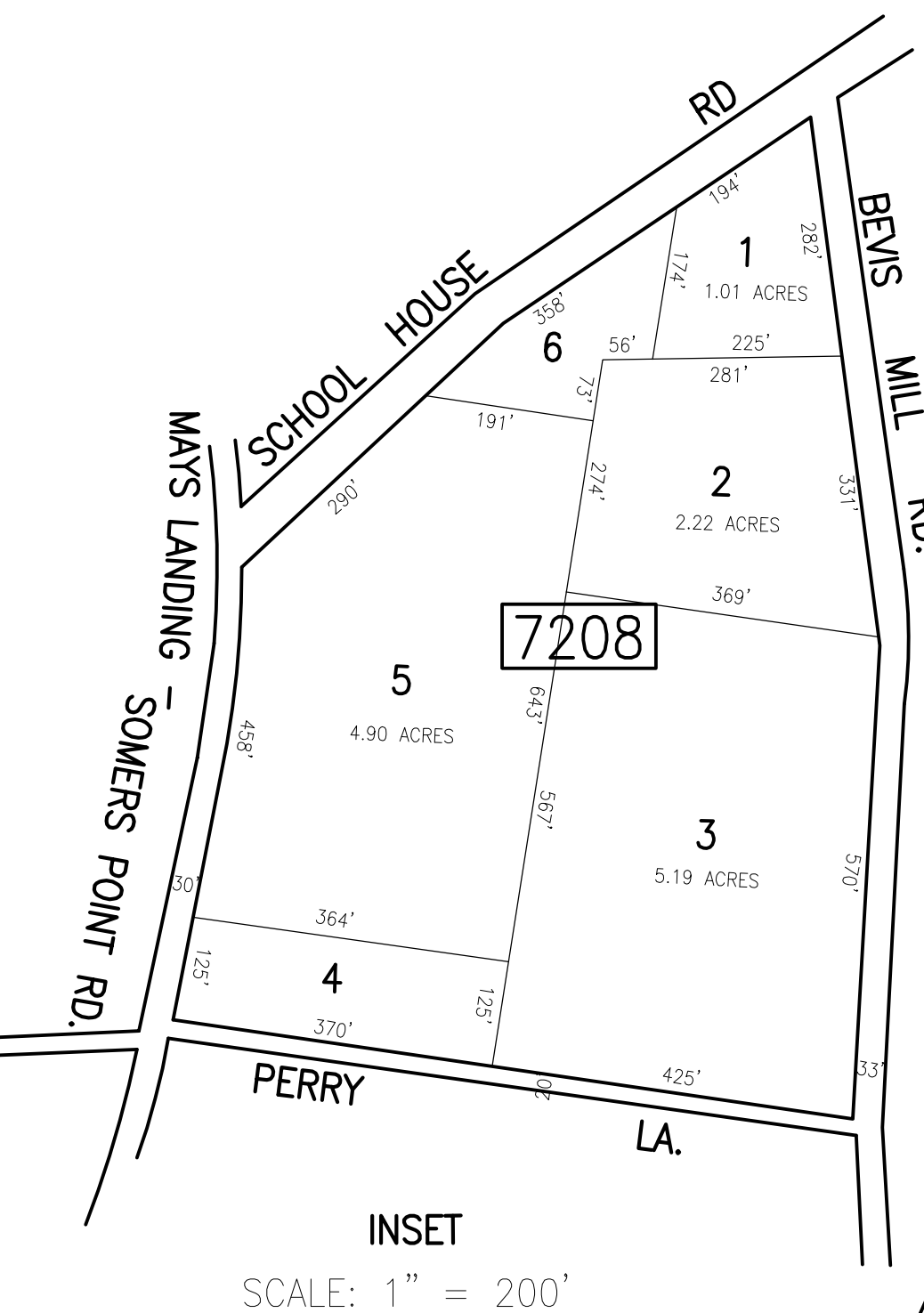
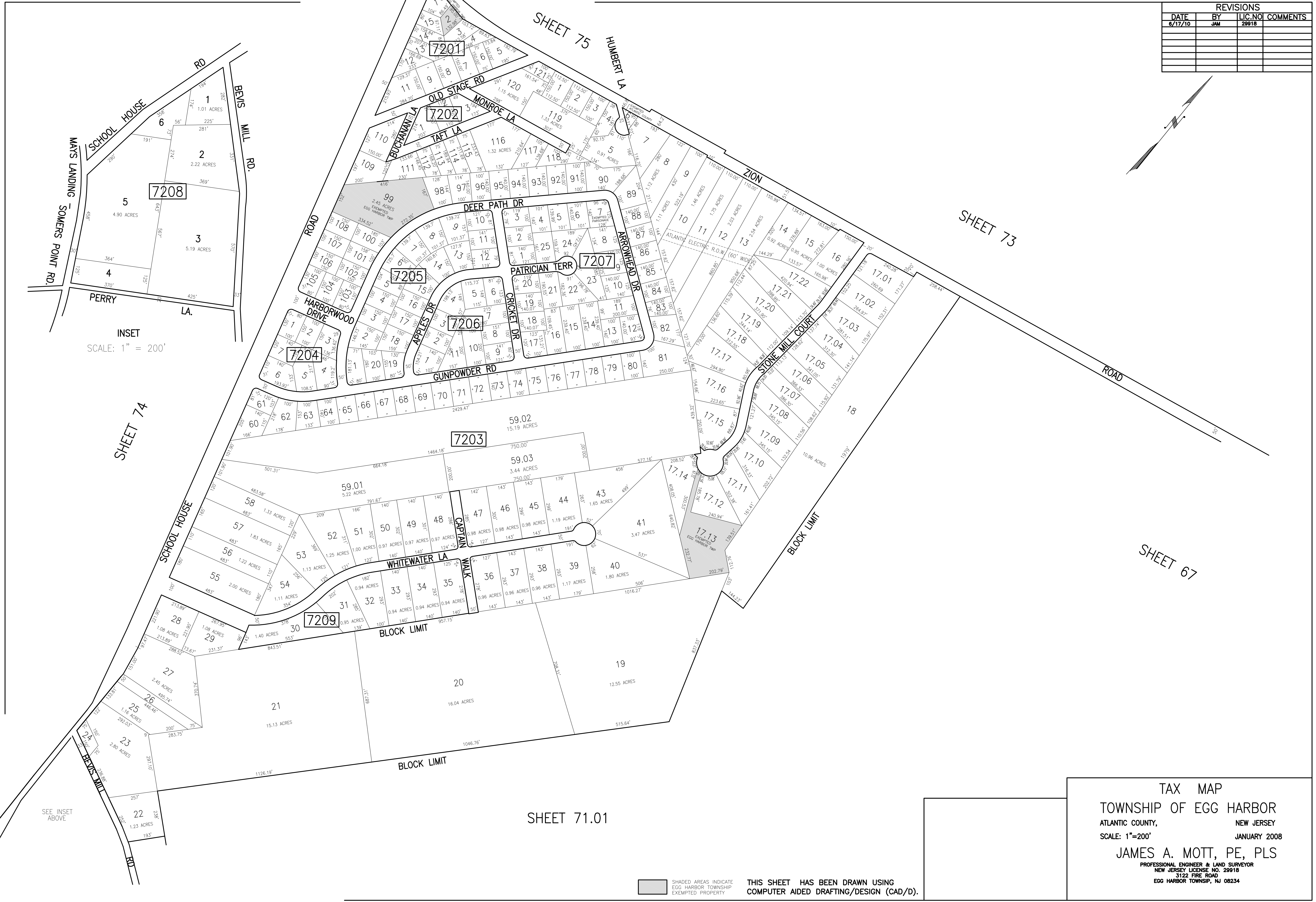
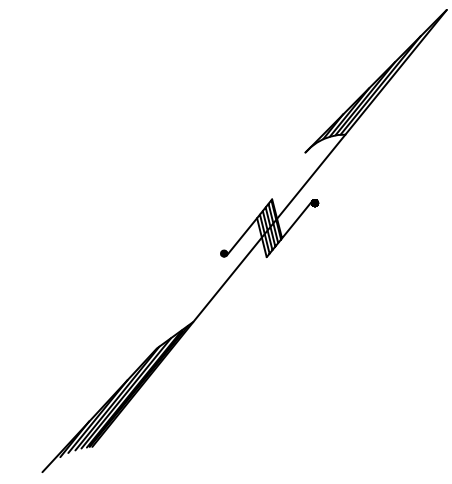


REVISIONS			
DATE	BY	LIC. NO.	COMMENTS
6/17/10	JAM	29918	



INSET  
SCALE: 1" = 200'

MAYS LANDING -  
SOMERS POINT RD

SEE INSET  
ABOVE

SHEET 71.01

SHADED AREAS INDICATE  
EGG HARBOR TOWNSHIP  
EXEMPTED PROPERTY  
THIS SHEET HAS BEEN DRAWN USING  
COMPUTER AIDED DRAFTING/DESIGN (CAD/D).

TAX MAP  
TOWNSHIP OF EGG HARBOR  
ATLANTIC COUNTY, NEW JERSEY  
SCALE: 1"=200' JANUARY 2008  
JAMES A. MOTT, PE, PLS  
PROFESSIONAL ENGINEER & LAND SURVEYOR  
NEW JERSEY LICENSE NO. 29918  
3122 FIRE ROAD  
EGG HARBOR TOWNSHIP, NJ 08234