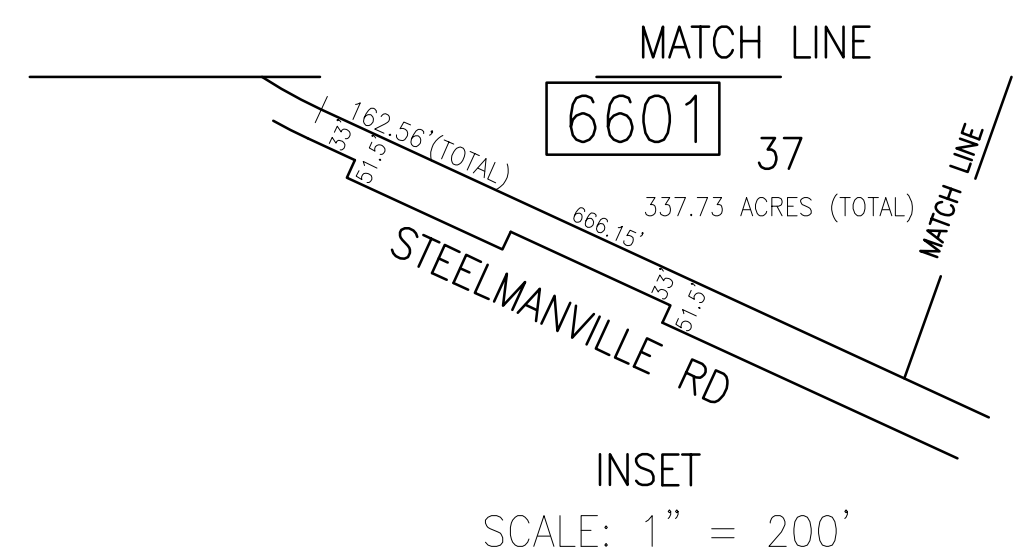


SHEET 69

| REVISIONS |     |          |          |
|-----------|-----|----------|----------|
| DATE      | BY  | LIC. NO. | COMMENTS |
| 6/21/10   | JAM | 29918    |          |
| 12/26/14  | JAM | 29918    |          |
| 2/28/17   | JAM | 29918    |          |
|           |     |          |          |
|           |     |          |          |
|           |     |          |          |

THIS SHEET HAS BEEN DRAWN USING COMPUTER AIDED DRAFTING/DESIGN (CAD/D).



**TAX MAP**  
 TOWNSHIP OF EGG HARBOR  
 ATLANTIC COUNTY, NEW JERSEY  
 SCALE: 1"=200' JANUARY 2008  
**JAMES A. MOTT, PE, PLS**  
 PROFESSIONAL ENGINEER & LAND SURVEYOR  
 NEW JERSEY LICENSE NO. 29918  
 3122 FIRE ROAD  
 EGG HARBOR TOWNSHIP, NJ 08234

SHADED AREAS INDICATE EGG HARBOR TOWNSHIP EXEMPTED PROPERTY

MATCH LINE (SEE INSET)