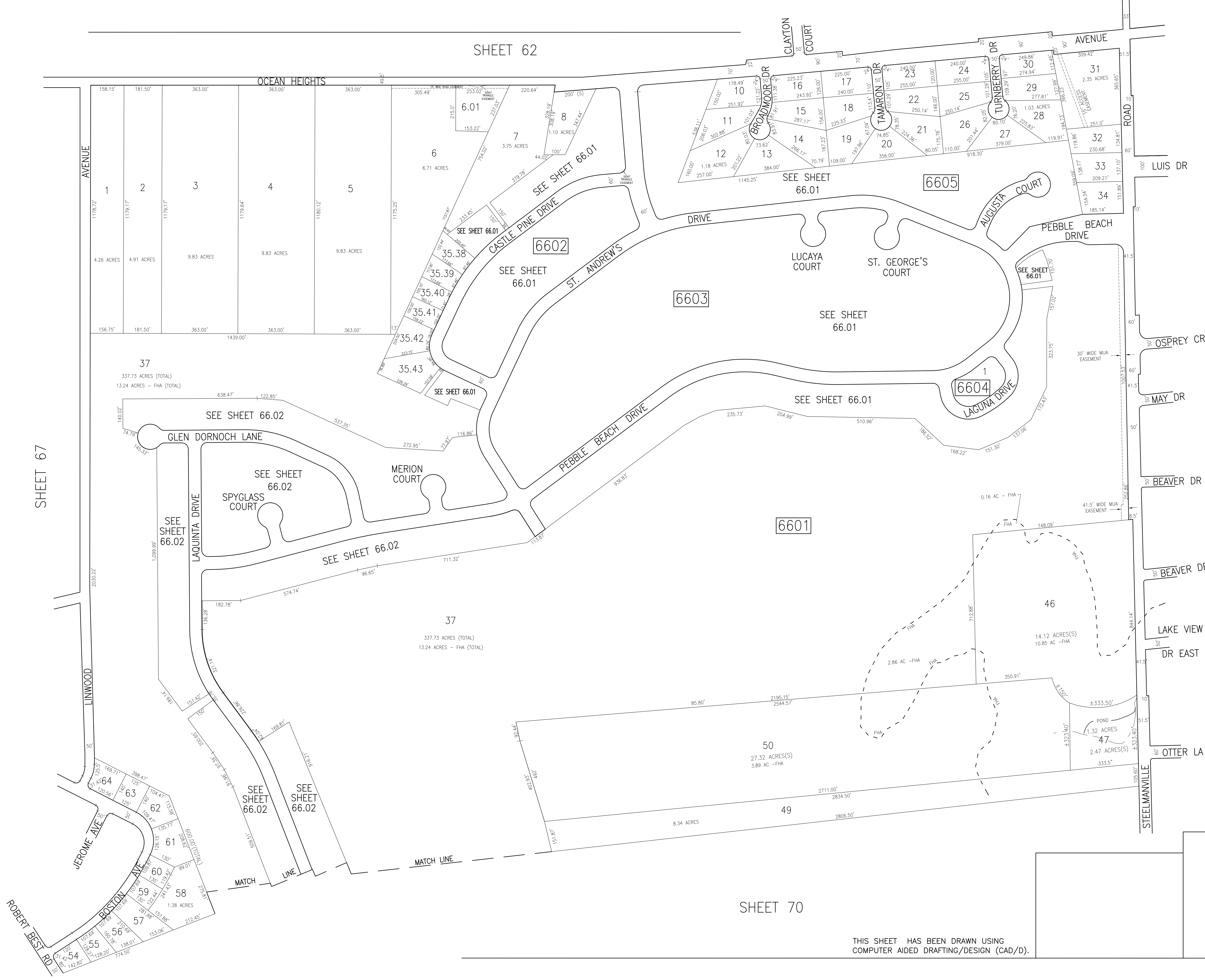
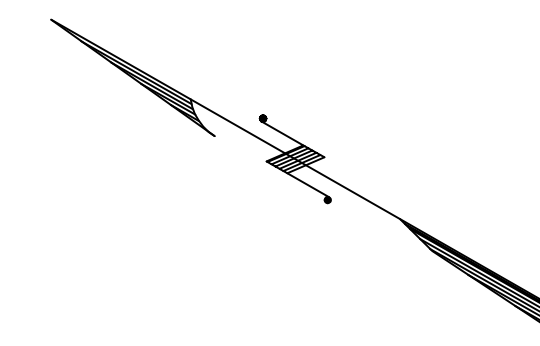


SHEET 62

REVISIONS			
DATE	BY	LIC. NO.	COMMENTS
1/7/08	JAM	29918	
6/18/10	JAM	29918	
3/25/14	JAM	29918	



SHEET 65

SHEET 67

SHEET 70

TAX MAP
 TOWNSHIP OF EGG HARBOR
 ATLANTIC COUNTY, NEW JERSEY
 SCALE: 1"=200' JANUARY 2008
 JAMES A. MOTT, PE, PLS
 PROFESSIONAL ENGINEER & LAND SURVEYOR
 NEW JERSEY LICENSE NO. 29918
 3122 FIRE ROAD
 EGG HARBOR TOWNSHIP, NJ 08234

THIS SHEET HAS BEEN DRAWN USING COMPUTER AIDED DRAFTING/DESIGN (CAD/D).