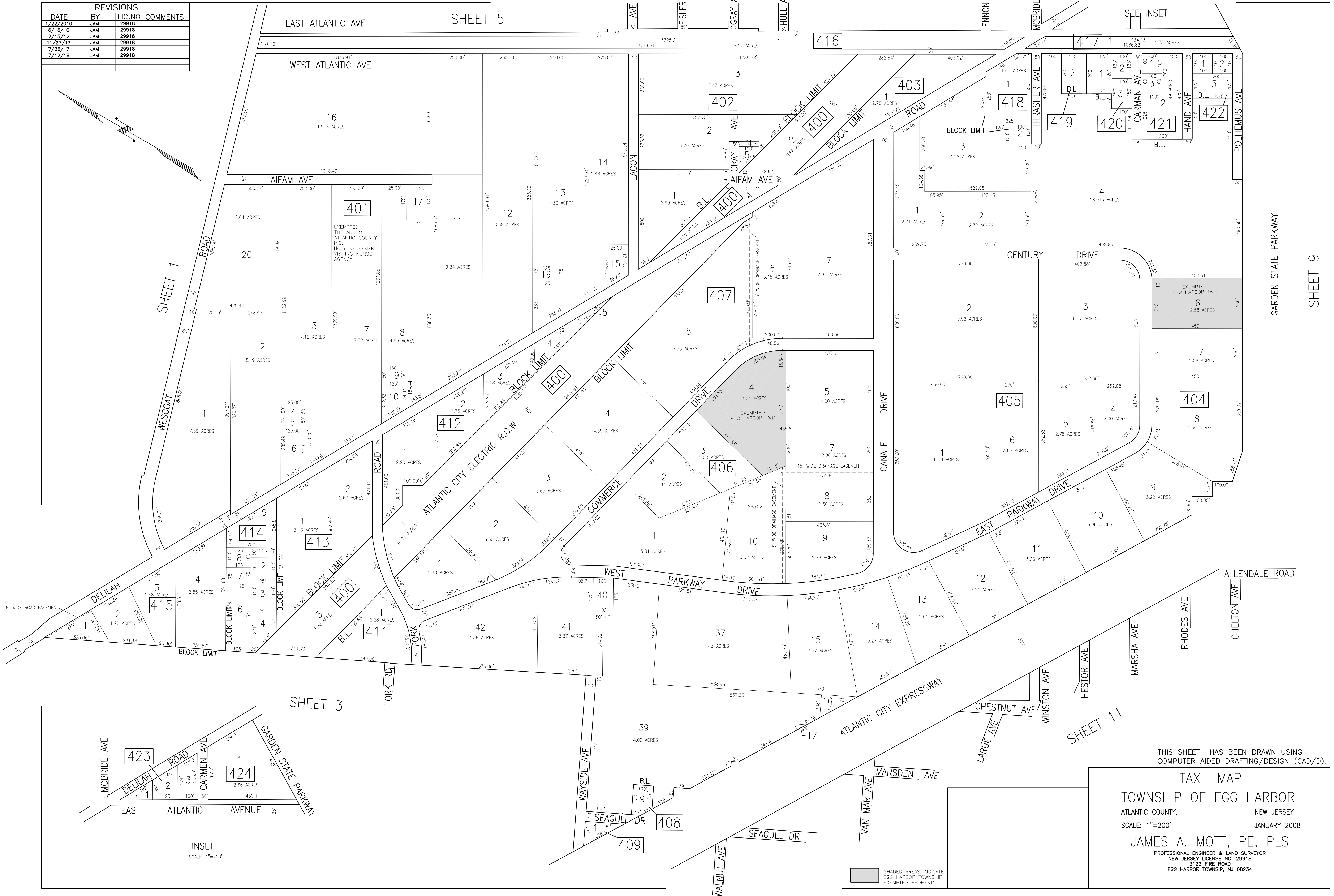


REVISIONS			
DATE	BY	LIC. NO.	COMMENTS
1/22/2010	JAM	29918	
6/16/10	JAM	29918	
2/15/12	JAM	29918	
11/27/13	JAM	29918	
7/26/17	JAM	29918	
7/12/18	JAM	29918	

EAST ATLANTIC AVE SHEET 5



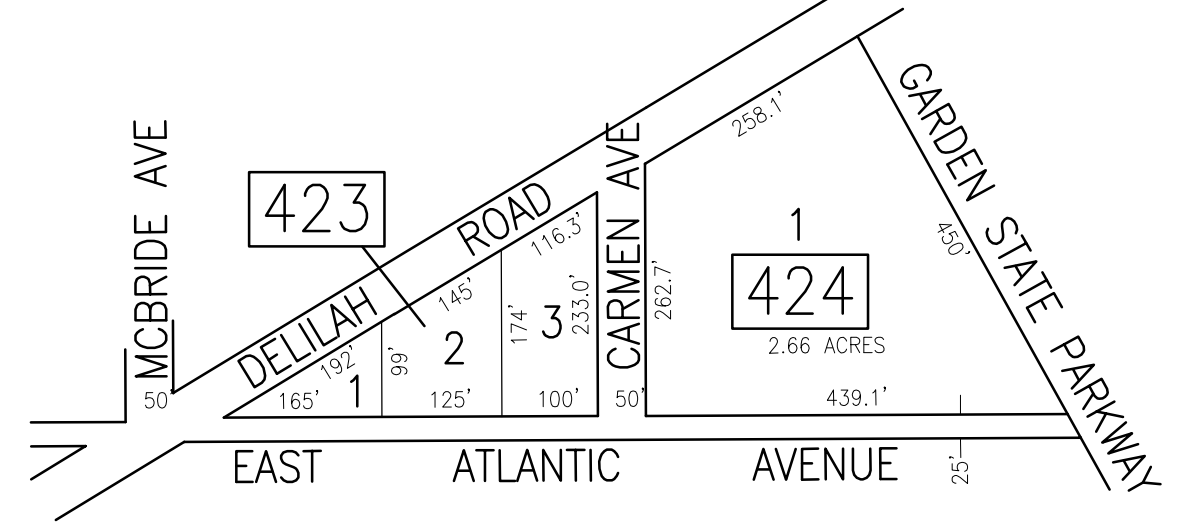
SHEET 1

SHEET 3

SHEET 11

GARDEN STATE PARKWAY SHEET 9

SEE INSET



INSET
SCALE: 1"=200'

THIS SHEET HAS BEEN DRAWN USING
COMPUTER AIDED DRAFTING/DESIGN (CAD/D).

TAX MAP
TOWNSHIP OF EGG HARBOR
ATLANTIC COUNTY, NEW JERSEY
SCALE: 1"=200'
JANUARY 2008
JAMES A. MOTT, PE, PLS
PROFESSIONAL ENGINEER & LAND SURVEYOR
NEW JERSEY LICENSE NO. 29918
3122 FIRE ROAD
EGG HARBOR TOWNSHIP, NJ 08234

SHADED AREAS INDICATE
EGG HARBOR TOWNSHIP
EXEMPTED PROPERTY