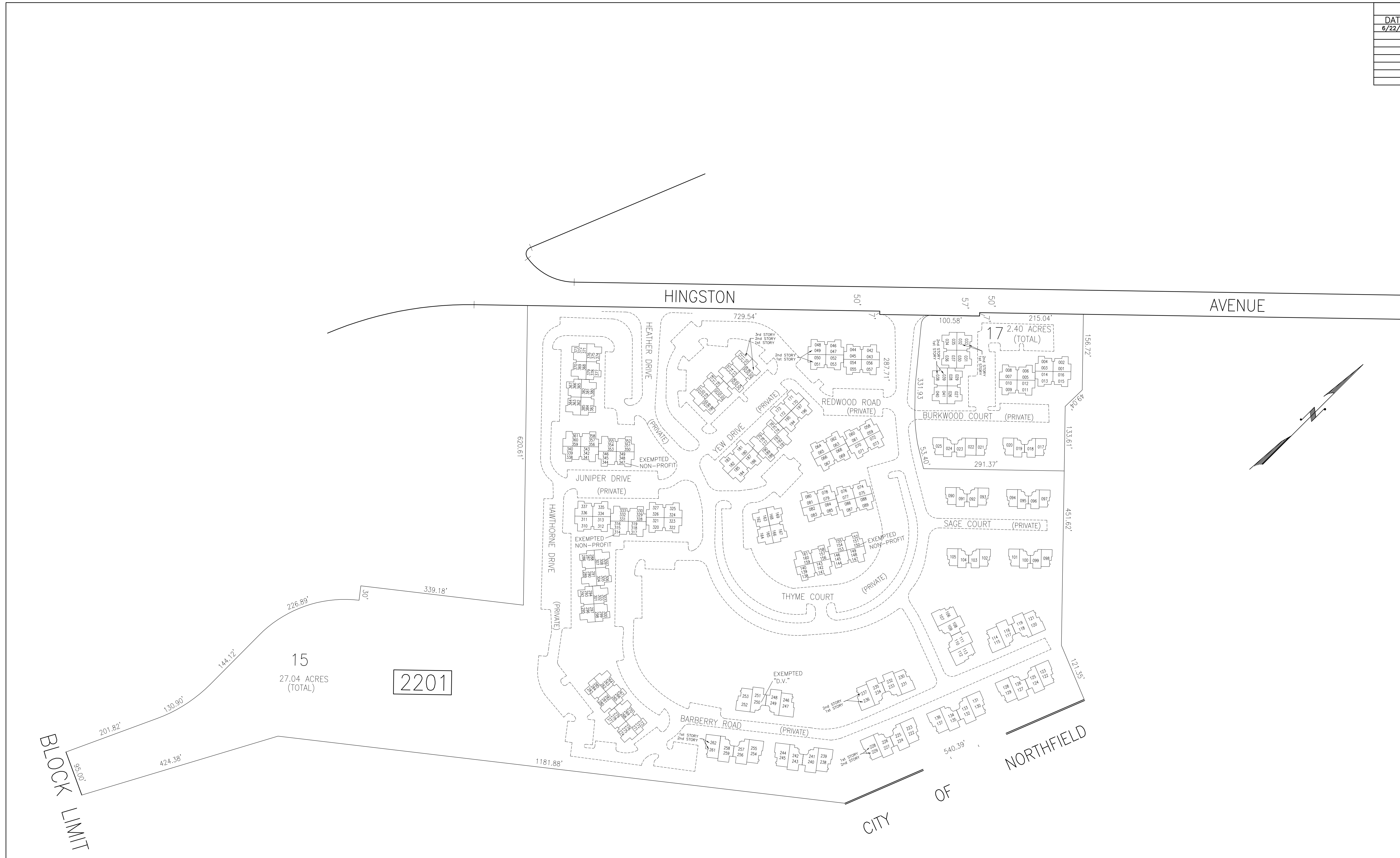


REVISIONS			
DATE	BY	LIC. NO.	COMMENTS
6/22/10	JAM	29918	



TAX MAP
 TOWNSHIP OF EGG HARBOR
 ATLANTIC COUNTY, NEW JERSEY
 SCALE: 1"=100' JANUARY 2008
 JAMES A. MOTT, PE, PLS
 PROFESSIONAL ENGINEER & LAND SURVEYOR
 NEW JERSEY LICENSE NO. 29918
 3122 FIRE ROAD
 EGG HARBOR TOWNSHIP, NJ 08234

THIS SHEET HAS BEEN DRAWN USING
 COMPUTER AIDED DRAFTING/DESIGN (CAD/D).