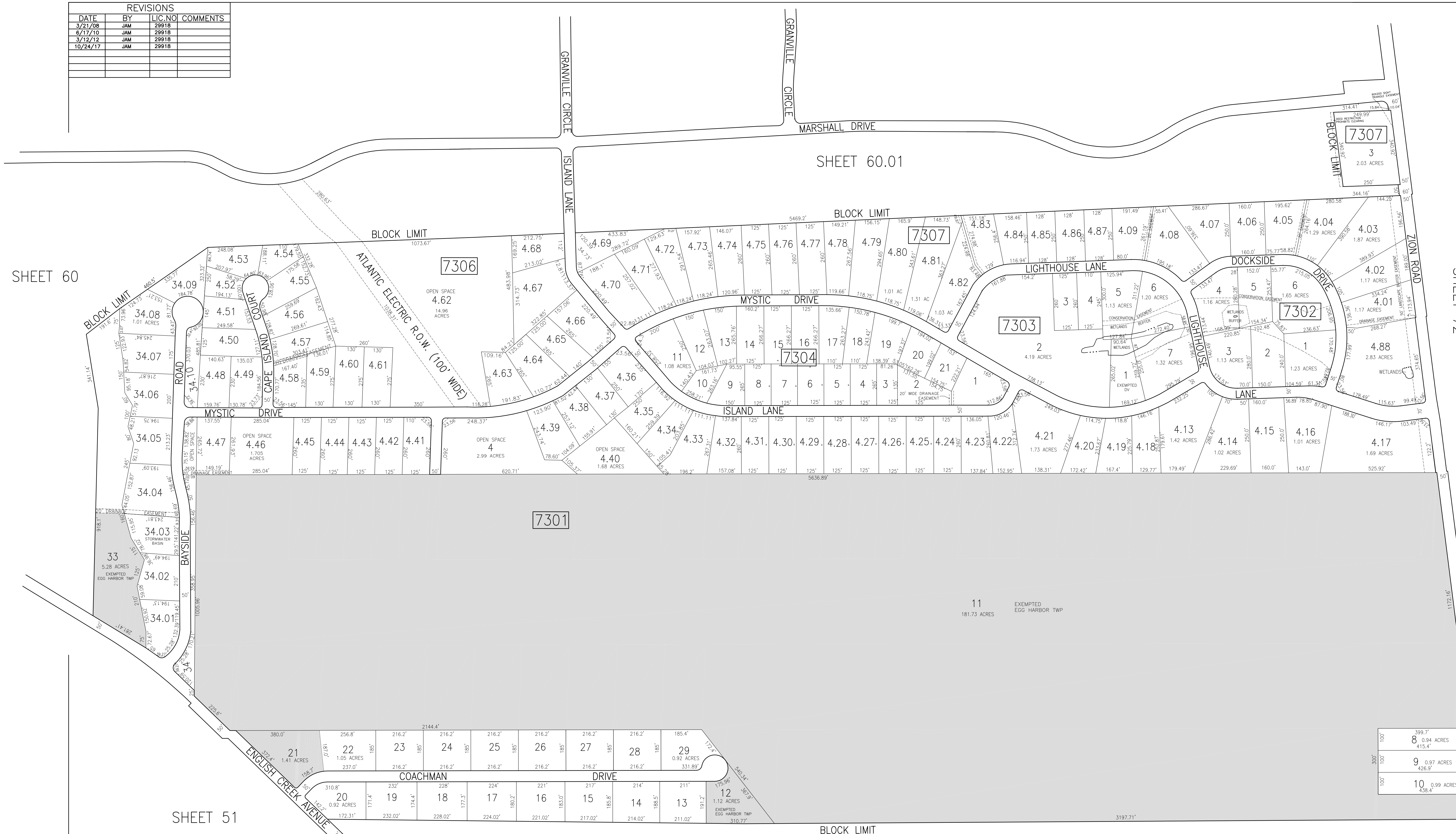


REVISIONS			
DATE	BY	LIC. NO.	COMMENTS
3/21/08	JAM	29918	
6/17/10	JAM	29918	
3/12/12	JAM	29918	
10/24/17	JAM	29918	

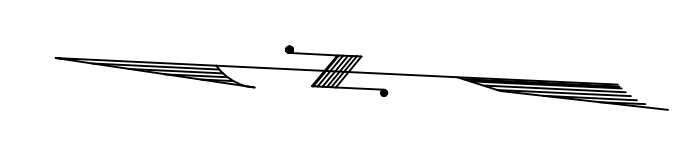


SHEET 60

SHEET 72

SHEET 51

SHEET 75



SHADED AREAS INDICATE EGG HARBOR TOWNSHIP EXEMPTED PROPERTY. THIS SHEET HAS BEEN DRAWN USING COMPUTER AIDED DRAFTING/DESIGN (CAD/D).

**TAX MAP**  
 TOWNSHIP OF EGG HARBOR  
 ATLANTIC COUNTY, NEW JERSEY  
 SCALE: 1"=200' JANUARY 2008  
**JAMES A. MOTT, PE, PLS**  
 PROFESSIONAL ENGINEER & LAND SURVEYOR  
 NEW JERSEY LICENSE NO. 29918  
 3122 FIRE ROAD  
 EGG HARBOR TOWNSHIP, NJ 08234