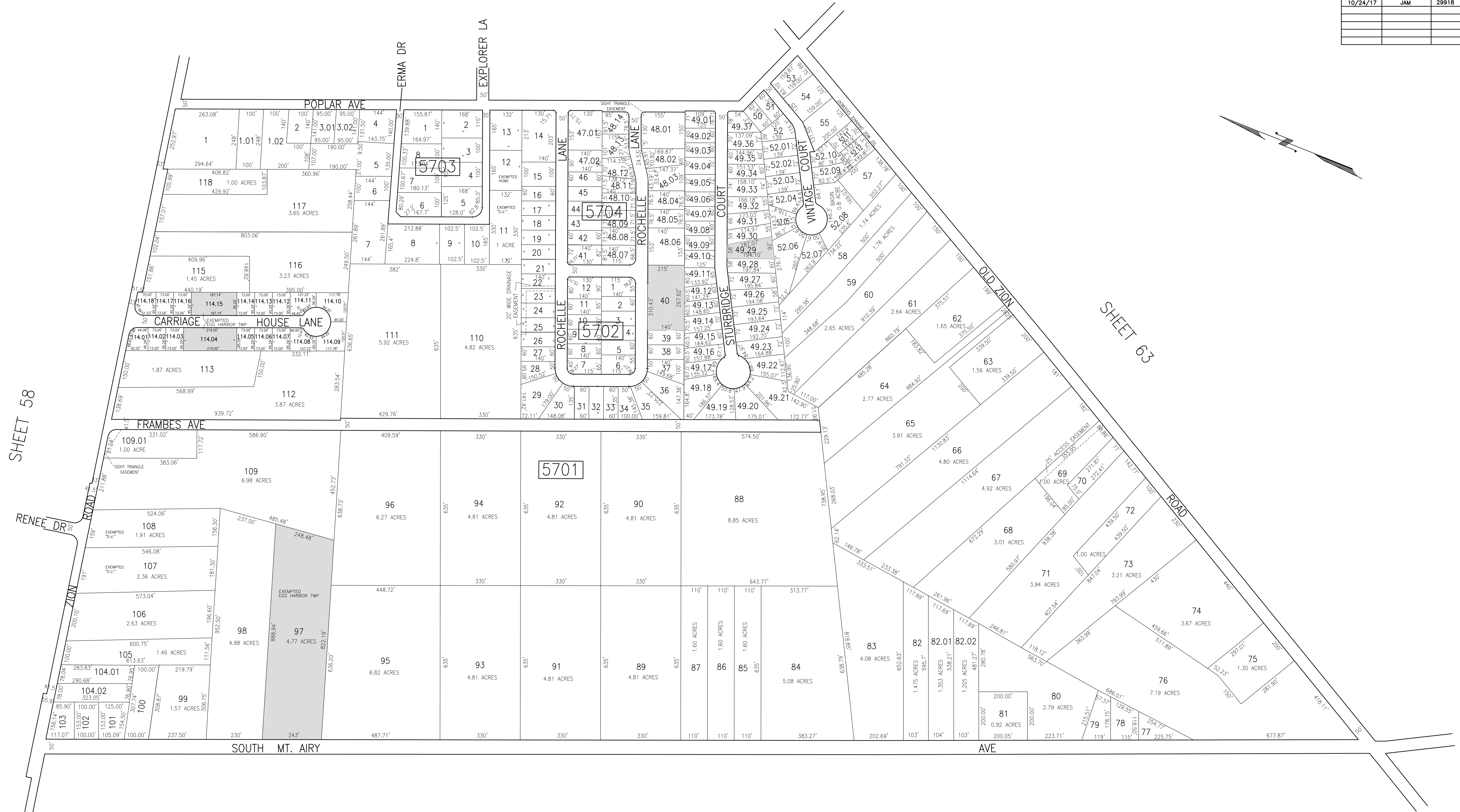


REVISIONS			
DATE	BY	LIC. NO.	COMMENTS
12/23/08	JAM	29918	
6/22/10	JAM	29918	
10/24/17	JAM	29918	



SHEET 58

SHEET 63

 SHADED AREAS INDICATE EGG HARBOR TOWNSHIP EXEMPTED PROPERTY  
 THIS SHEET HAS BEEN DRAWN USING COMPUTER AIDED DRAFTING/DESIGN (CAD/D).

TAX MAP  
 TOWNSHIP OF EGG HARBOR  
 ATLANTIC COUNTY, NEW JERSEY  
 SCALE: 1"=200' JANUARY 2008  
 JAMES A. MOTT, PE, PLS  
 PROFESSIONAL ENGINEER & LAND SURVEYOR  
 NEW JERSEY LICENSE NO. 29918  
 3122 FIRE ROAD  
 EGG HARBOR TOWNSHIP, NJ 08234