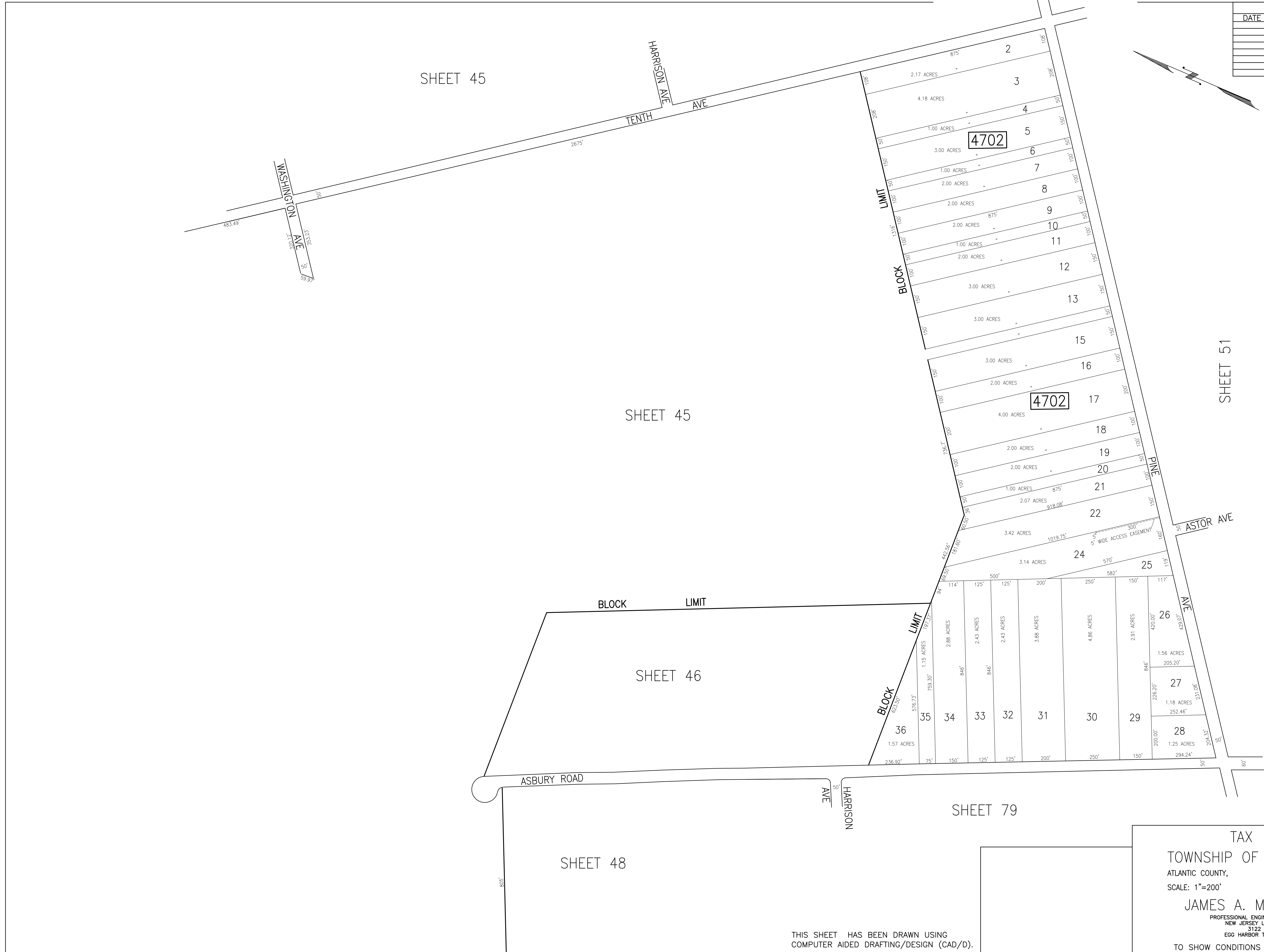
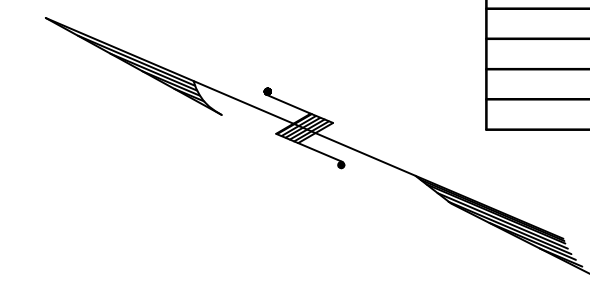


REVISIONS			
DATE	BY	LIC. NO.	COMMENTS



SHEET 45

SHEET 45

SHEET 46

SHEET 48

SHEET 79

SHEET 51

THIS SHEET HAS BEEN DRAWN USING COMPUTER AIDED DRAFTING/DESIGN (CAD/D).

TAX MAP
TOWNSHIP OF EGG HARBOR
ATLANTIC COUNTY, NEW JERSEY
SCALE: 1"=200' JANUARY 2008
JAMES A. MOTT, PE, PLS
PROFESSIONAL ENGINEER & LAND SURVEYOR
NEW JERSEY LICENSE NO. 29918
3122 FIRE ROAD
EGG HARBOR TOWNSHIP, NJ 08234
TO SHOW CONDITIONS AS OF JANUARY 1, 2008