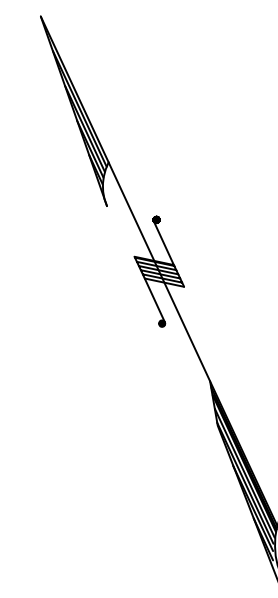
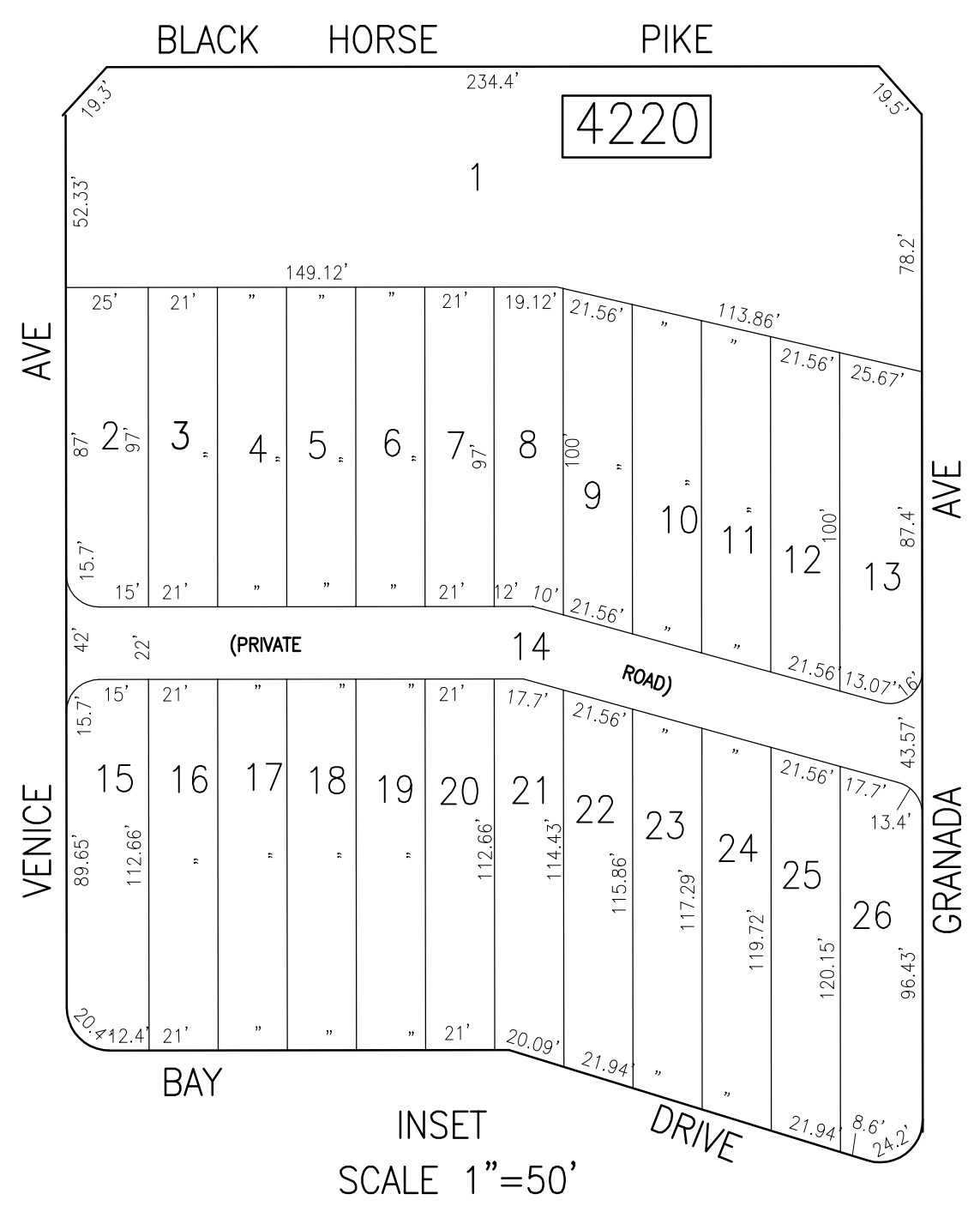
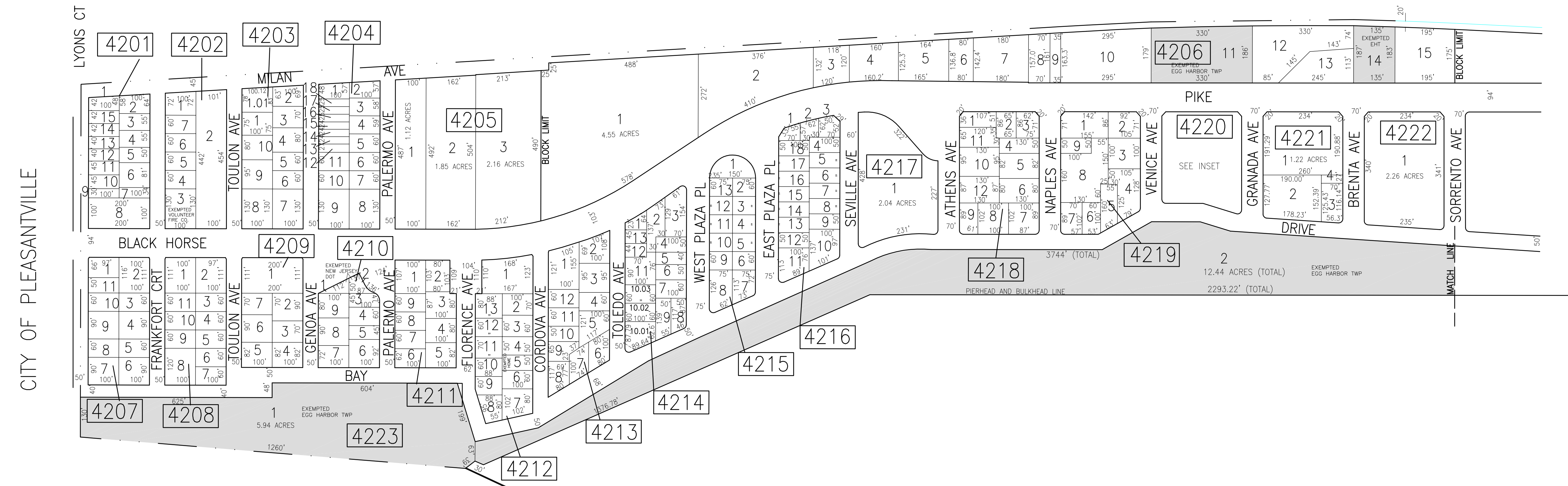


REVISIONS			
DATE	BY	LIC. NO.	COMMENTS
6/18/10	JAM	29918	
12/16/13	JAM	29918	
9/30/16	JAM	29918	
1/17/19	JAM	29918	



CITY OF PLEASANTVILLE



LAKES BAY

CITY OF PLEASANTVILLE

SHEET 43

SHADED AREAS INDICATE EGG HARBOR TOWNSHIP EXEMPTED PROPERTY. THIS SHEET HAS BEEN DRAWN USING COMPUTER AIDED DRAFTING/DESIGN (CAD/D).

TAX MAP
 TOWNSHIP OF EGG HARBOR
 ATLANTIC COUNTY, NEW JERSEY
 SCALE: 1"=200' JANUARY 2008
 JAMES A. MOTT, PE, PLS
 PROFESSIONAL ENGINEER & LAND SURVEYOR
 NEW JERSEY LICENSE NO. 29918
 3122 FIRE ROAD
 EGG HARBOR TOWNSHIP, NJ 08234