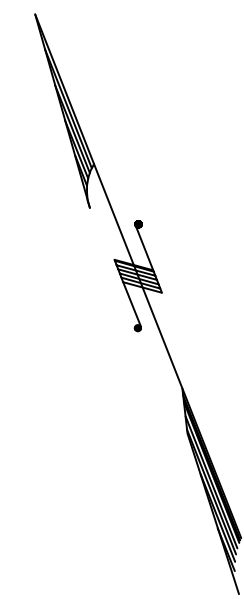
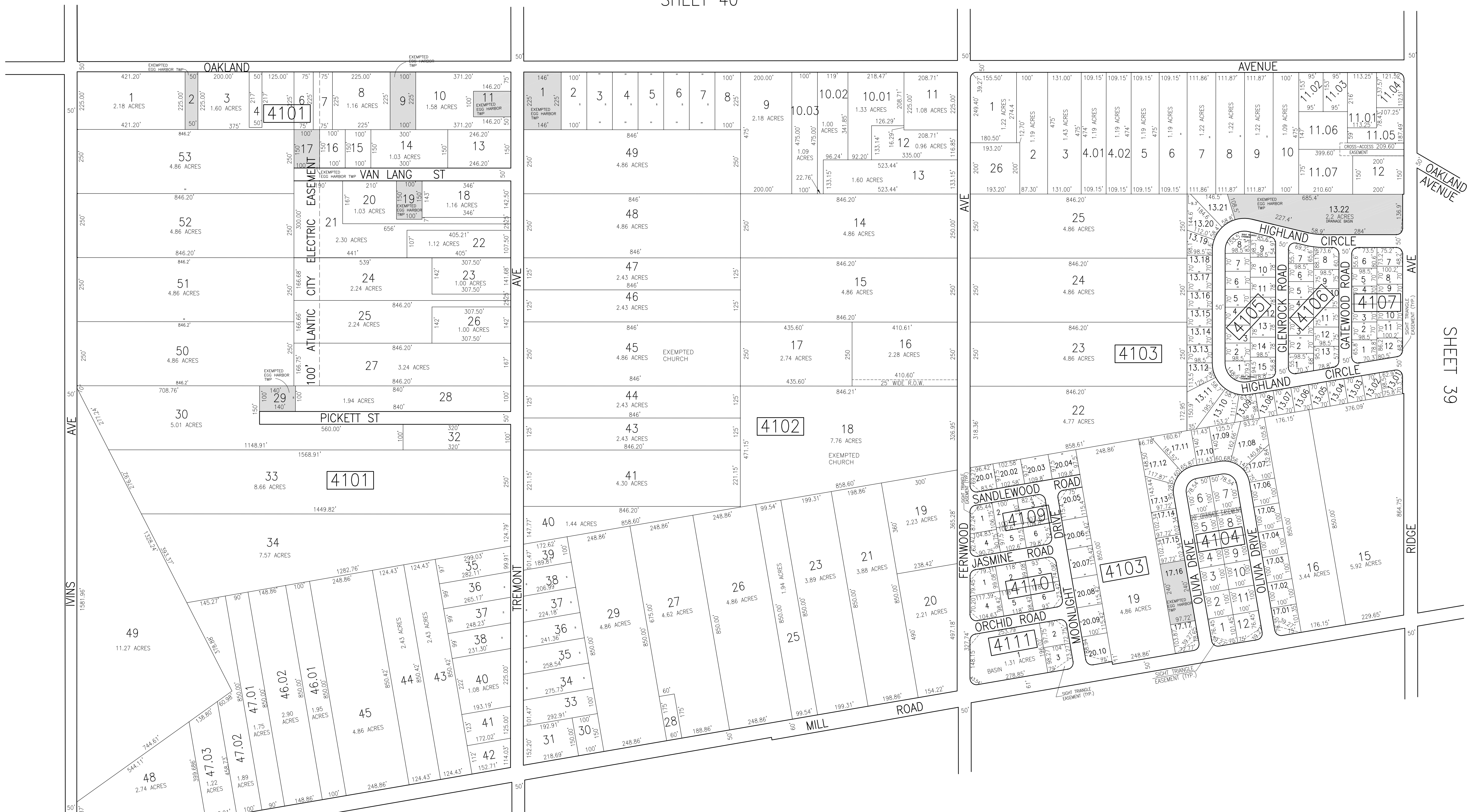


REVISIONS				REVISIONS			
DATE	BY	LIC.NO	COMMENTS	DATE	BY	LIC.NO	COMMENTS
7/13/18	JAM	29918		8/19/08	JAM	29918	
				11/2/09	JAM	29918	
				6/18/10	JAM	29918	
				9/19/12	JAM	29918	
				12/16/13	JAM	29918	
				9/25/15	JAM	29918	
				1/25/18	JAM	29918	
				3/2/18	JAM	29918	

SHEET 40



SHEET 33



SHEET 52

SHEET 53

SHEET 39

TAX MAP
 TOWNSHIP OF EGG HARBOR
 ATLANTIC COUNTY, NEW JERSEY
 SCALE: 1"=200' JANUARY 2010
 JAMES A. MOTT, PE, PLS
 PROFESSIONAL ENGINEER & LAND SURVEYOR
 NEW JERSEY LICENSE NO. 29918
 3122 FIRE ROAD
 EGG HARBOR TOWNSHIP, NJ 08234

SHADED AREAS INDICATE
 EGG HARBOR TOWNSHIP
 EXEMPTED PROPERTY

THIS SHEET HAS BEEN DRAWN USING
 COMPUTER AIDED DRAFTING/DESIGN (CAD/D).