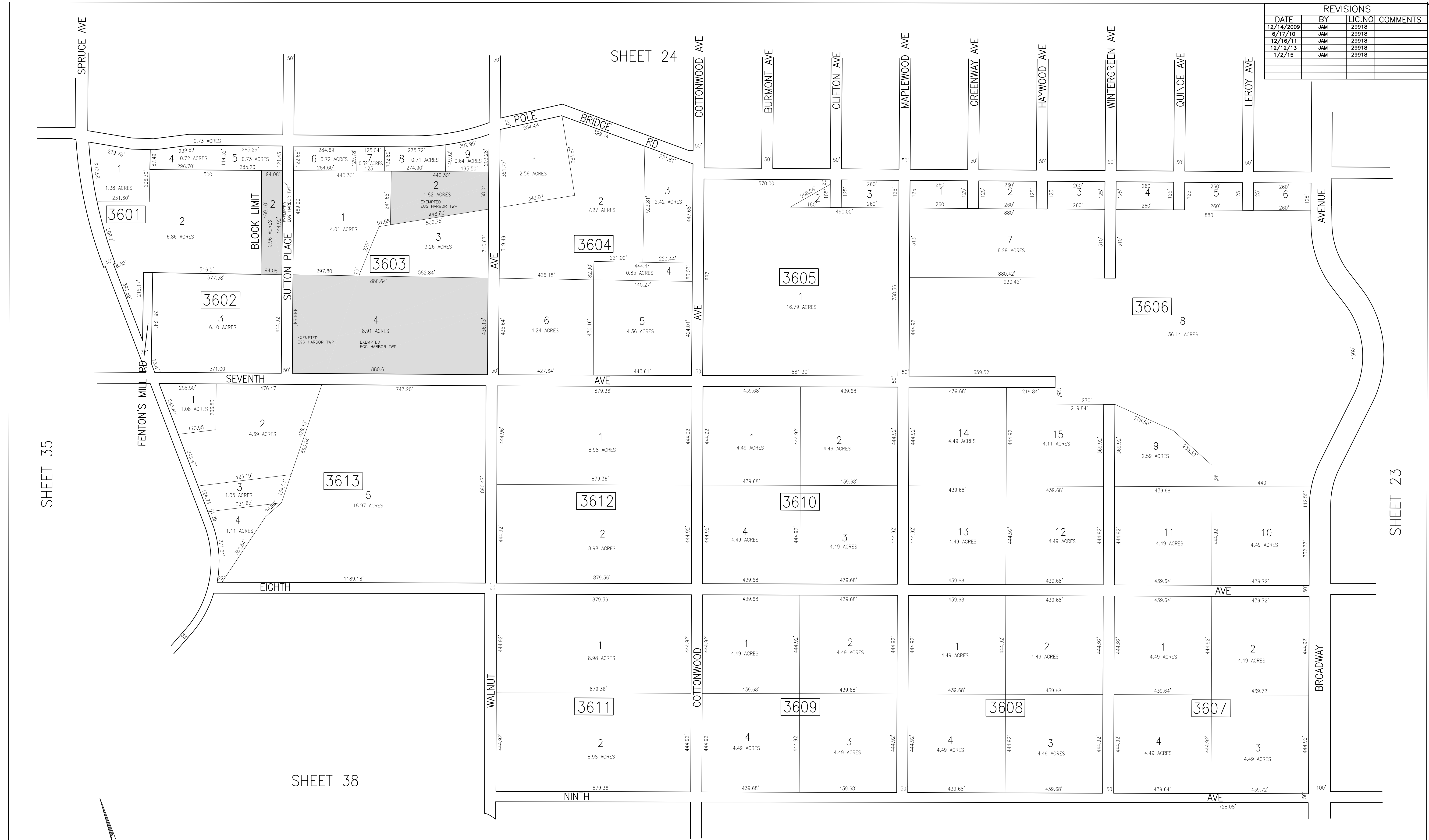


REVISIONS			
DATE	BY	LIC. NO.	COMMENTS
12/14/2009	JAM	29918	
6/17/10	JAM	29918	
12/16/11	JAM	29918	
12/12/13	JAM	29918	
1/2/15	JAM	29918	



SHEET 35

SHEET 24

SHEET 23

SHEET 38

SHEET 37

 SHADED AREAS INDICATE EGG HARBOR TOWNSHIP EXEMPTED PROPERTY
 THIS SHEET HAS BEEN DRAWN USING COMPUTER AIDED DRAFTING/DESIGN (CAD/D).

TAX MAP
 TOWNSHIP OF EGG HARBOR
 ATLANTIC COUNTY, NEW JERSEY
 SCALE: 1"=200'
 JANUARY 2010
 JAMES A. MOTT, PE, PLS
 PROFESSIONAL ENGINEER & LAND SURVEYOR
 NEW JERSEY LICENSE NO. 29918
 3122 FIRE ROAD
 EGG HARBOR TOWNSHIP, NJ 08234