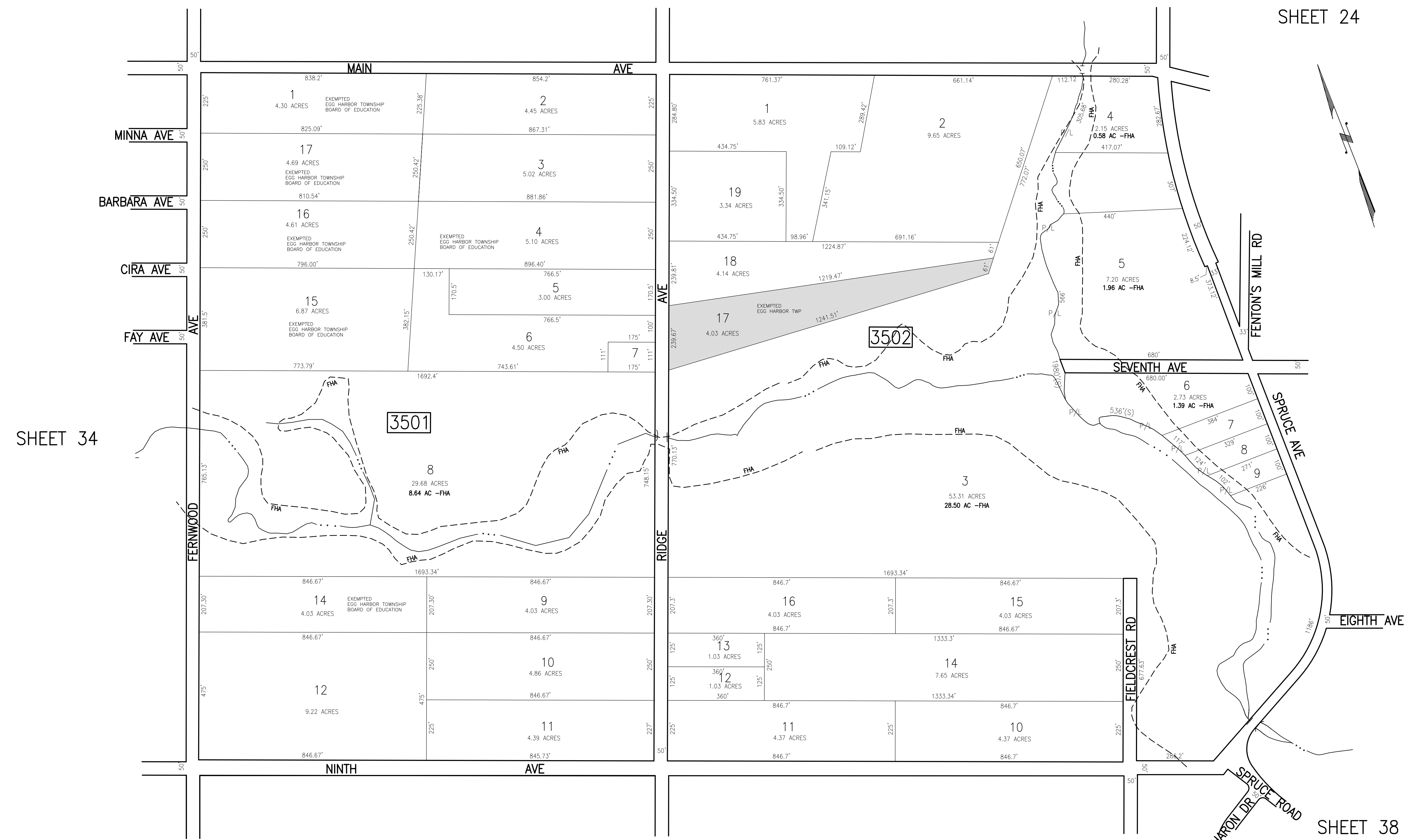


REVISIONS			
DATE	BY	LIC. NO.	COMMENTS
6/17/10	JAM	29918	

SHEET 25

SHEET 24



SHEET 34

SHEET 36

SHEET 38

SHEET 40

SHEET 39

TAX MAP  
 TOWNSHIP OF EGG HARBOR  
 ATLANTIC COUNTY, NEW JERSEY  
 SCALE: 1"=200' JANUARY 2008  
 JAMES A. MOTT, PE, PLS  
 PROFESSIONAL ENGINEER & LAND SURVEYOR  
 NEW JERSEY LICENSE NO. 29918  
 3122 FIRE ROAD  
 EGG HARBOR TOWNSHIP, NJ 08234

SHADED AREAS INDICATE EGG HARBOR TOWNSHIP EXEMPTED PROPERTY. THIS SHEET HAS BEEN DRAWN USING COMPUTER AIDED DRAFTING/DESIGN (CAD/D).