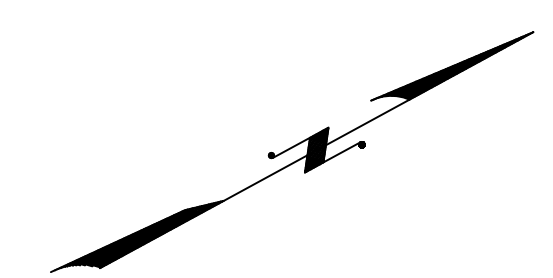


REVISIONS			
DATE	BY	LIC. NO.	COMMENTS
6/23/10	JAM	2991B	



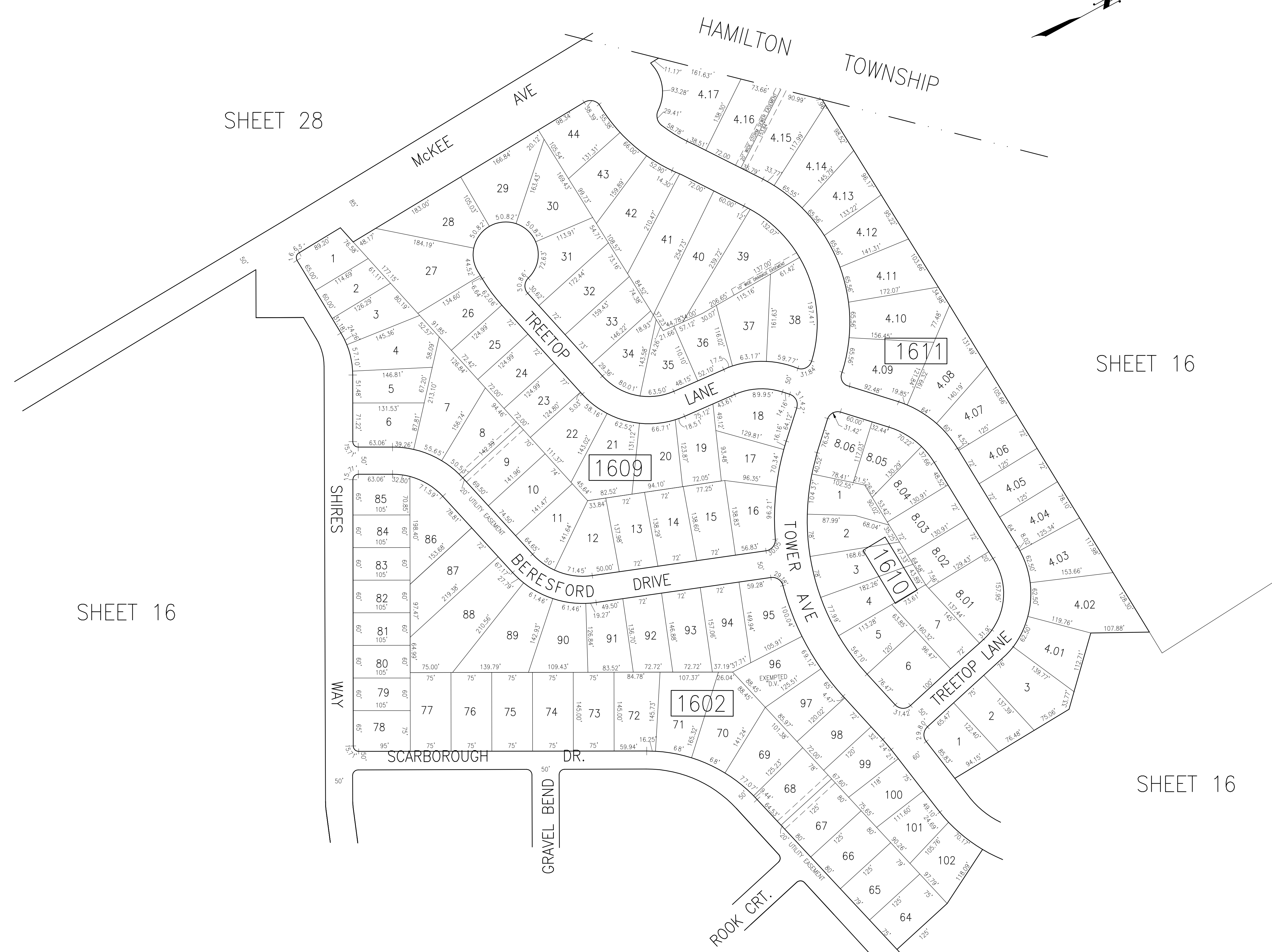
SHEET 28

SHEET 16

SHEET 16

SHEET 16

SHEET 16



THIS SHEET HAS BEEN DRAWN USING COMPUTER AIDED DRAFTING/DESIGN (CAD/D).

TAX MAP  
 TOWNSHIP OF EGG HARBOR  
 ATLANTIC COUNTY, NEW JERSEY  
 SCALE: 1"=100' JANUARY 2008  
 JAMES A. MOTT, PE, PLS  
 PROFESSIONAL ENGINEER & LAND SURVEYOR  
 NEW JERSEY LICENSE NO. 2991B  
 3122 FIRE ROAD  
 EGG HARBOR TOWNSHIP, NJ 08234