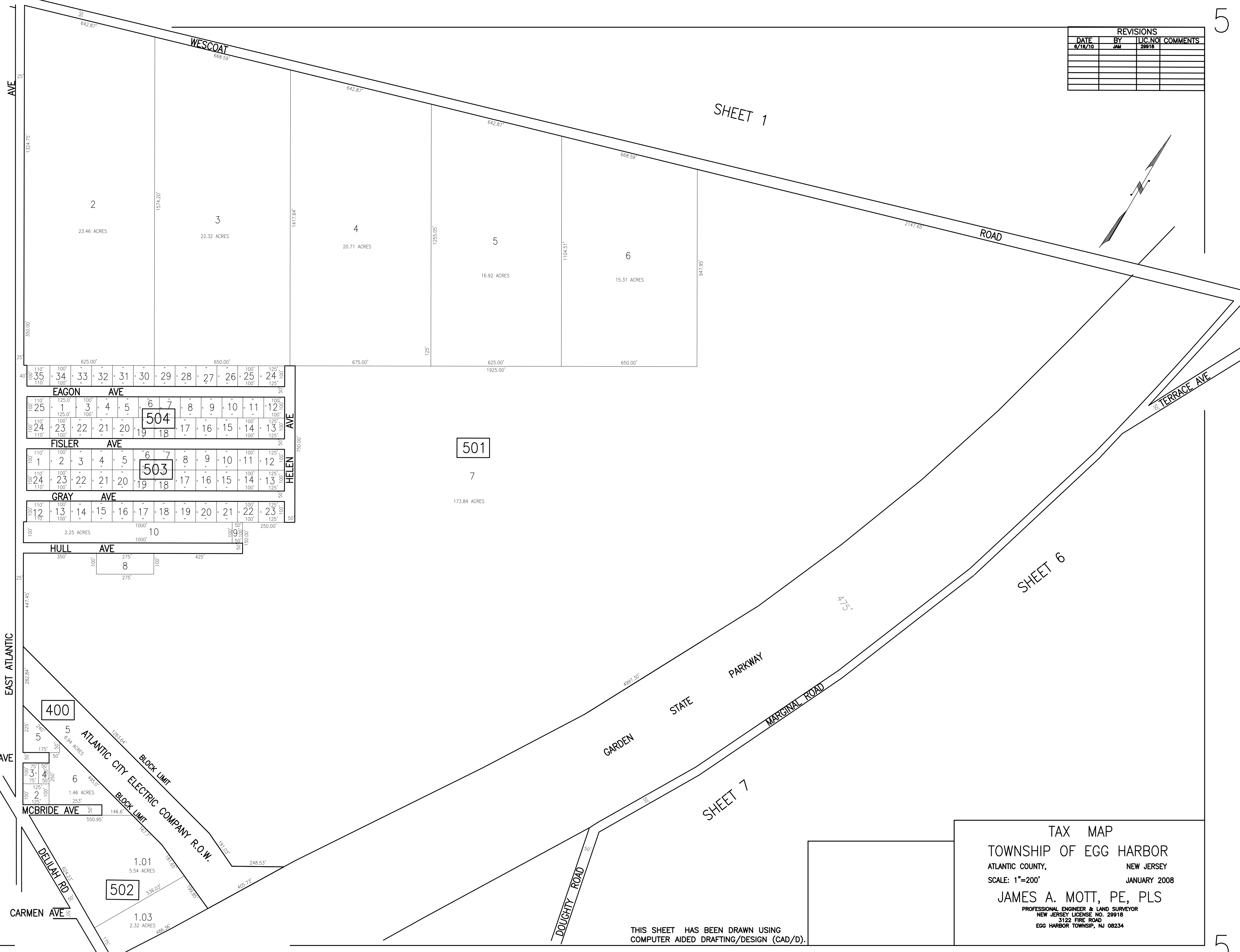


REVISIONS			
DATE	BY	LIC. NO.	COMMENTS
6/18/10	JAM	29918	



SHEET 4

SHEET 1

SHEET 6

SHEET 7

501

504

503

400

502

TAX MAP
 TOWNSHIP OF EGG HARBOR
 ATLANTIC COUNTY, NEW JERSEY
 SCALE: 1"=200' JANUARY 2008
 JAMES A. MOTT, PE, PLS
 PROFESSIONAL ENGINEER & LAND SURVEYOR
 NEW JERSEY LICENSE NO. 29918
 3122 FIRE ROAD
 EGG HARBOR TOWNSHIP, NJ 08234

THIS SHEET HAS BEEN DRAWN USING COMPUTER AIDED DRAFTING/DESIGN (CAD/D).