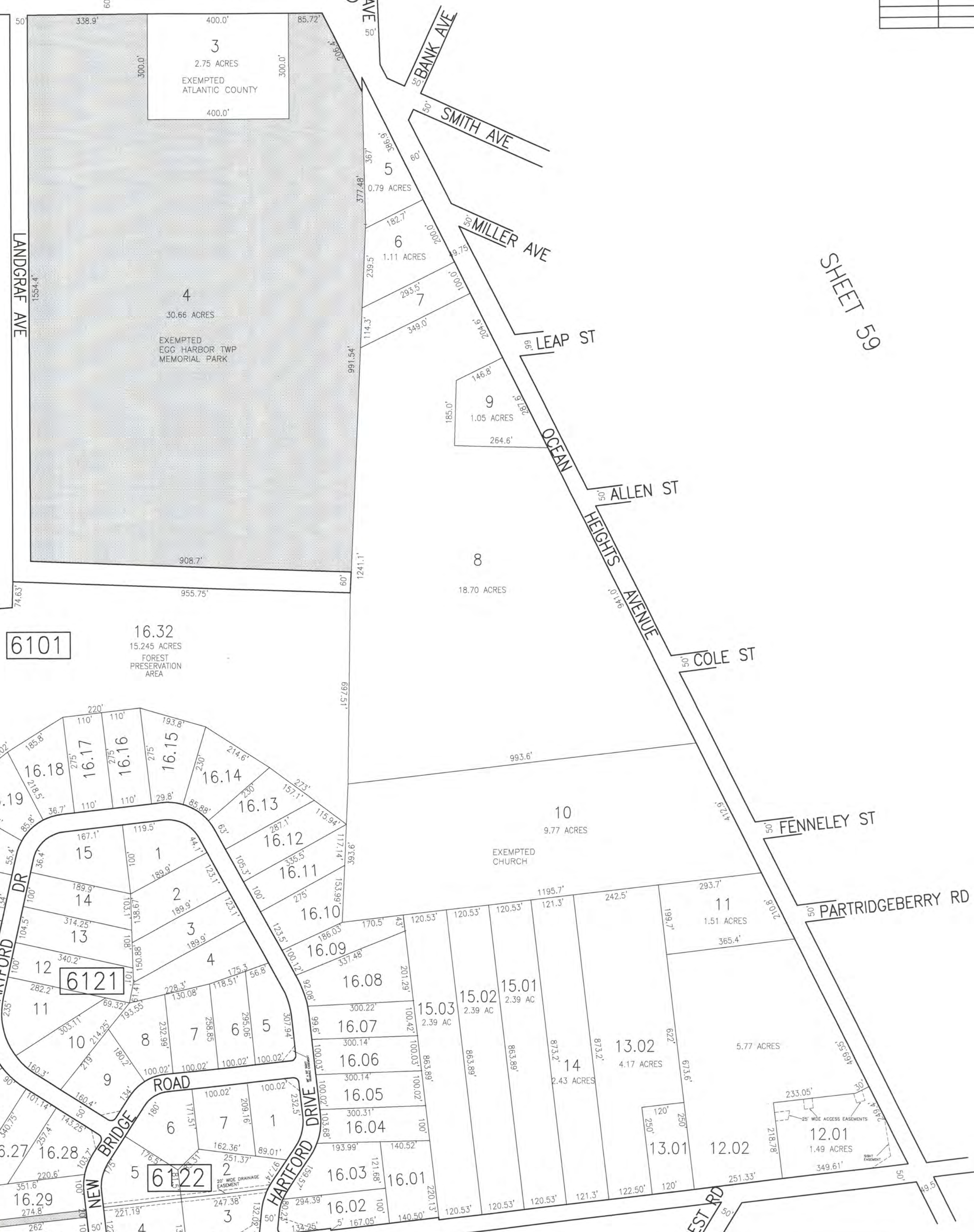


SHEET 60

REVISIONS			
DATE	BY	LIC. NO.	COMMENTS
6/22/10	JAM	29918	
12/16/13	JAM	29918	

SWIFT AVE

SHEET 60.01



SHEET 59



SHEET 67

SHADED AREAS INDICATE
EGG HARBOR TOWNSHIP
EXEMPTED PROPERTY

THIS SHEET HAS BEEN DRAWN USING
COMPUTER AIDED DRAFTING/DESIGN (CAD/D).

TAX MAP
TOWNSHIP OF EGG HARBOR
ATLANTIC COUNTY, NEW JERSEY
SCALE: 1"=200'
JANUARY 2008
JAMES A. MOTT, PE, PLS
PROFESSIONAL ENGINEER & LAND SURVEYOR
NEW JERSEY LICENSE NO. 29918
3122 FIRE ROAD
EGG HARBOR TOWNSHIP, NJ 08234