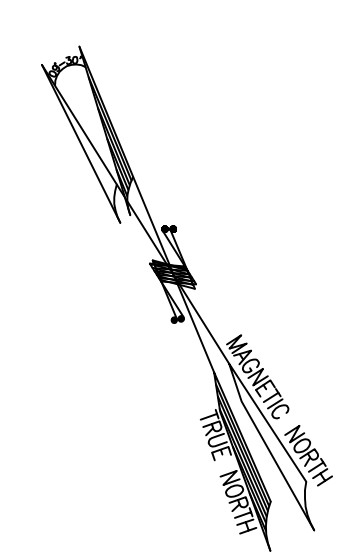


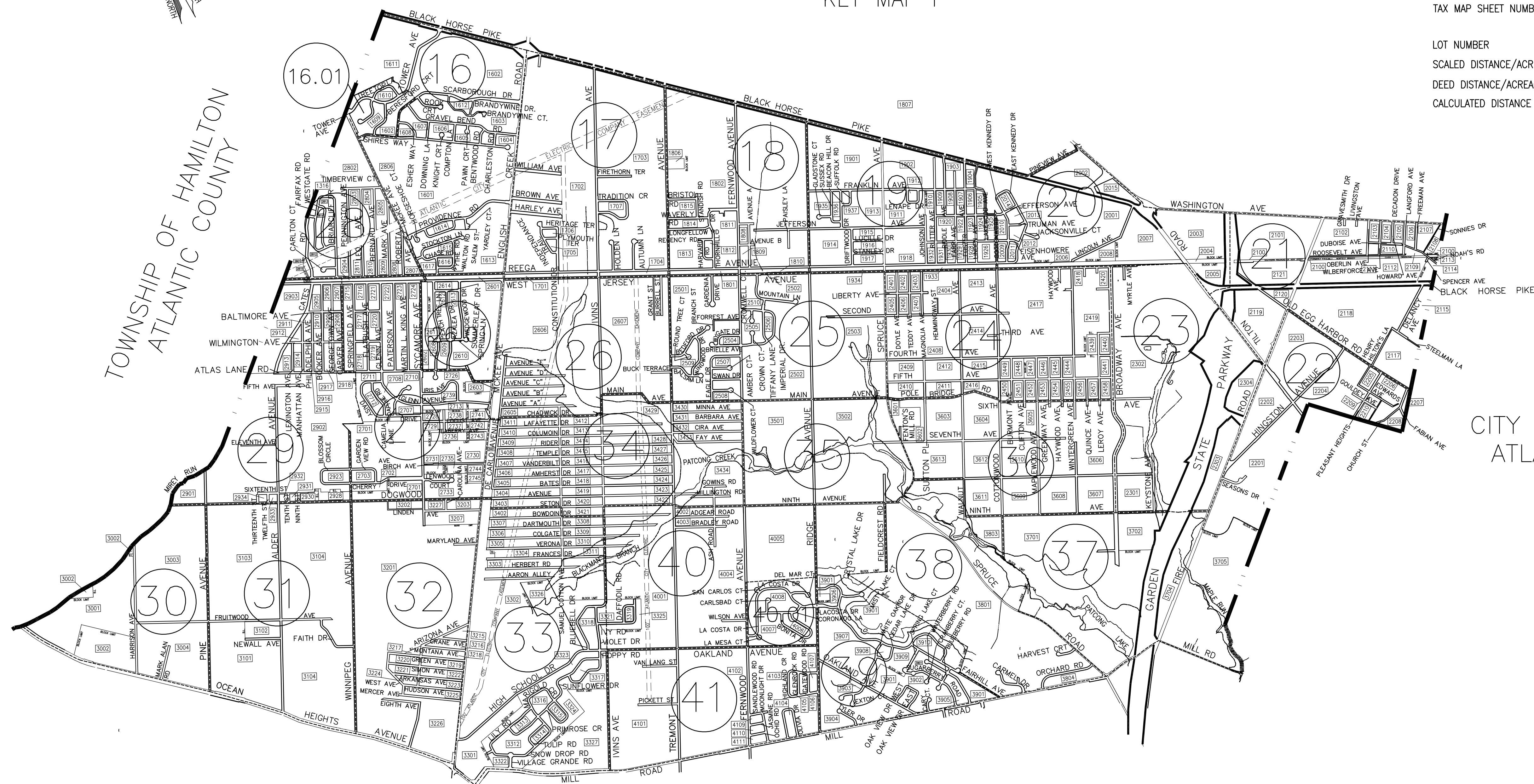
REVISIONS			
DATE	BY	LIC. NO.	COMMENTS
12/17/09	JAM	29918	
6/15/10	JAM	29918	
7/12/10	JAM	29918	
1/15/16	JAM	29918	
10/17/16	JAM	29918	
7/27/17	JAM	29918	
2/18/19	JAM	29918	

### LEGEND

COUNTY LINE	
MUNICIPAL BOUNDARY LINE	
ARTIFICIAL BLOCK LIMIT	
FORMER PROPERTY LINE	
STREAM & WATER LINES	
STREAM & WATER LINES (IF PROPERTY LINE)	
SHEET LIMIT LINE (ON KEY MAP)	
PIERHEAD LINE	
BULKHEAD LINE	
FLOOD HAZARD LINE	
BOUNDARIES OF SPECIAL TAXING DIST	
EASEMENT LINE	
BLOCK NUMBER (ON KEY MAP)	
BLOCK NUMBER	
TAX MAP SHEET NUMBER	
LOT NUMBER	16
SCALED DISTANCE/ACREAGE	200'(S)
DEED DISTANCE/ACREAGE	200'(D)
CALCULATED DISTANCE	200'



## KEY MAP I



## KEY MAP III

THE AREAS, BOUNDARIES, AND DIMENSIONS SHOWN ON THIS MAP ARE DERIVED FROM GROUND SURVEYS, AERIAL SURVEYS AND RECORDED PLANS, MAPS, DEEDS, AND WILLS AND ARE TO BE USED FOR TAX ASSESSMENT PURPOSES ONLY.

TAX MAP  
 TOWNSHIP OF EGG HARBOR  
 ATLANTIC COUNTY, NEW JERSEY  
 SCALE: 1"=1500' JANUARY 2008  
 JAMES A. MOTT, PE, PLS  
 PROFESSIONAL ENGINEER & LAND SURVEYOR  
 NEW JERSEY LICENSE NO. 29918  
 3122 FIRE ROAD  
 EGG HARBOR TOWNSHIP, NJ 08234

THIS SHEET HAS BEEN DRAWN USING  
 COMPUTER AIDED DRAFTING/DESIGN (CAD/D).