

PLATE 19

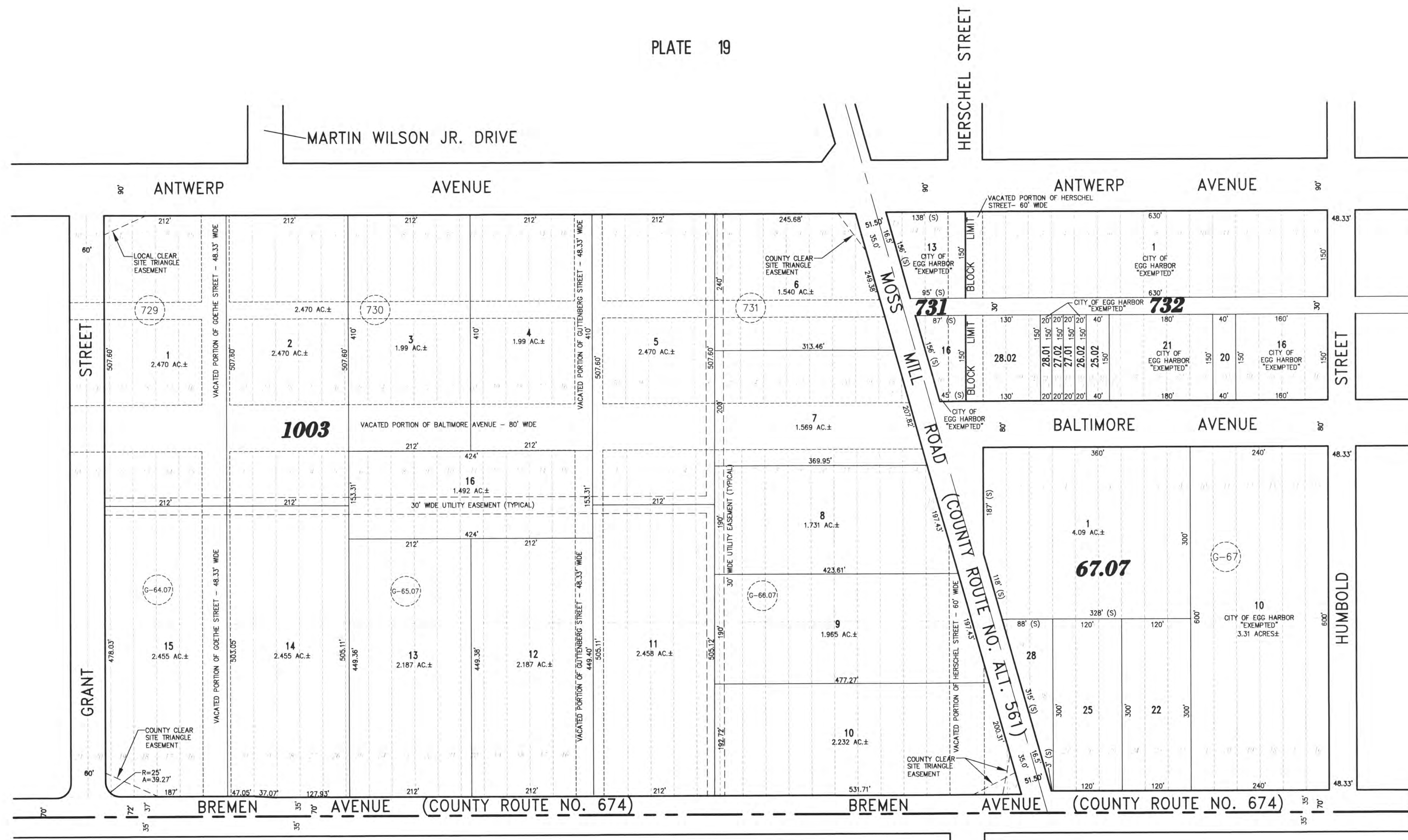
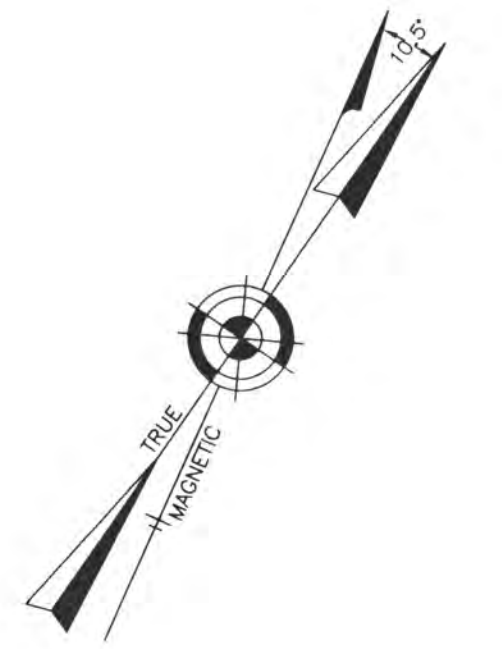


PLATE 15

PLATE 25

**TOWNSHIP OF GALLOWAY
COUNTY OF ATLANTIC**

**TAX MAP
CITY OF EGG HARBOR**

ATLANTIC COUNTY NEW JERSEY

SCALE: 1" = 100' DATE: 9-17-1999

CRAIG F. REMINGTON LAND SURVEYOR LIC. NO. 23924



REMINGTON, VERNICK & WALBERG ENGINEERS
 845 N. MAIN STREET, PLEASANTVILLE, N.J. 08232
 (609) 645-7800 FAX (609) 645-7076
 WEB SITE ADDRESS: WWW.RVWE.COM

REVISED BY REMINGTON AND VERNICK ENGINEERS - 10-18-2005, 01071323

COMBINED PLATE - OLD PLATES 72, & PART OF 63