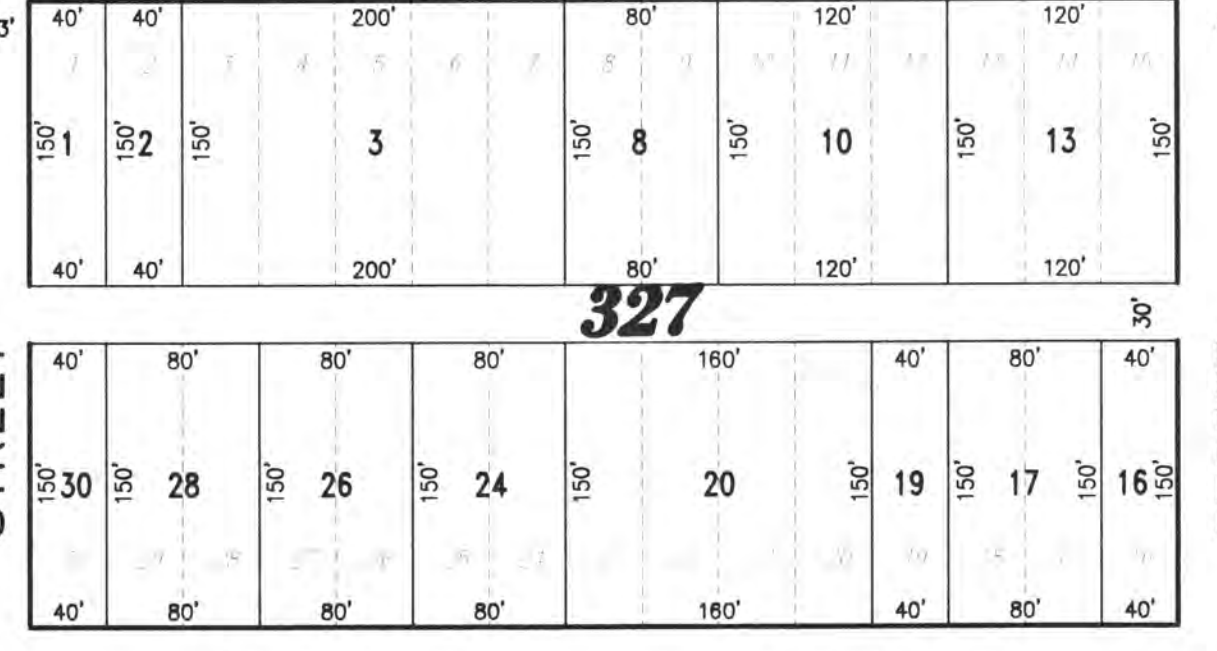
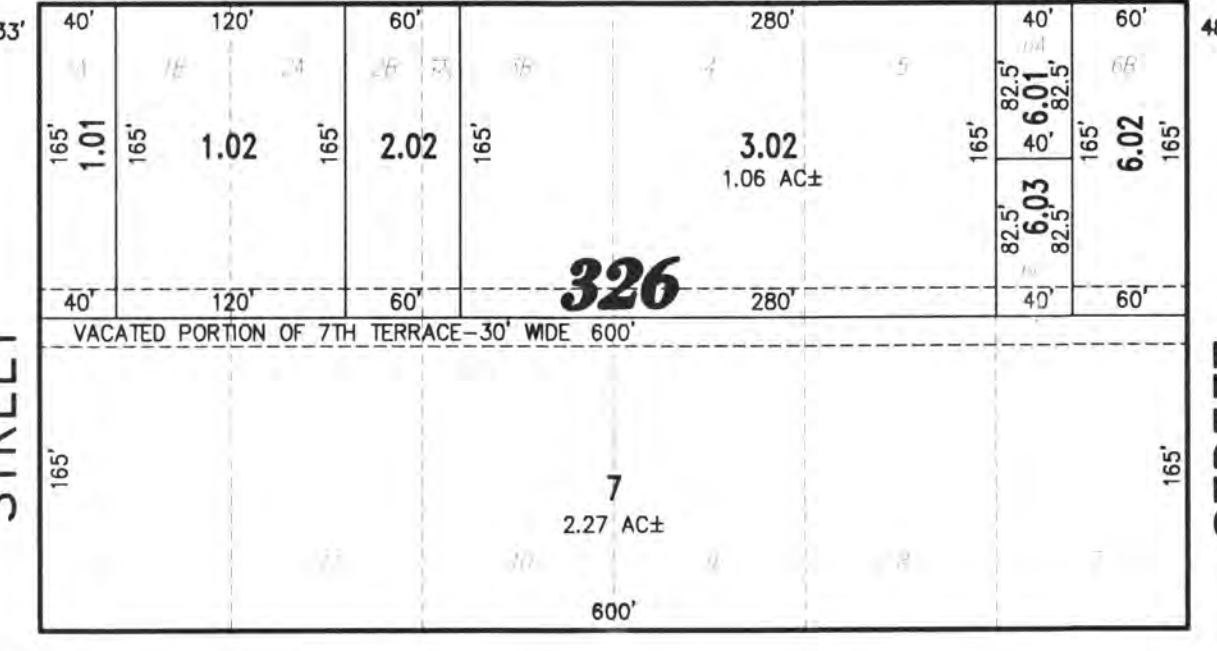
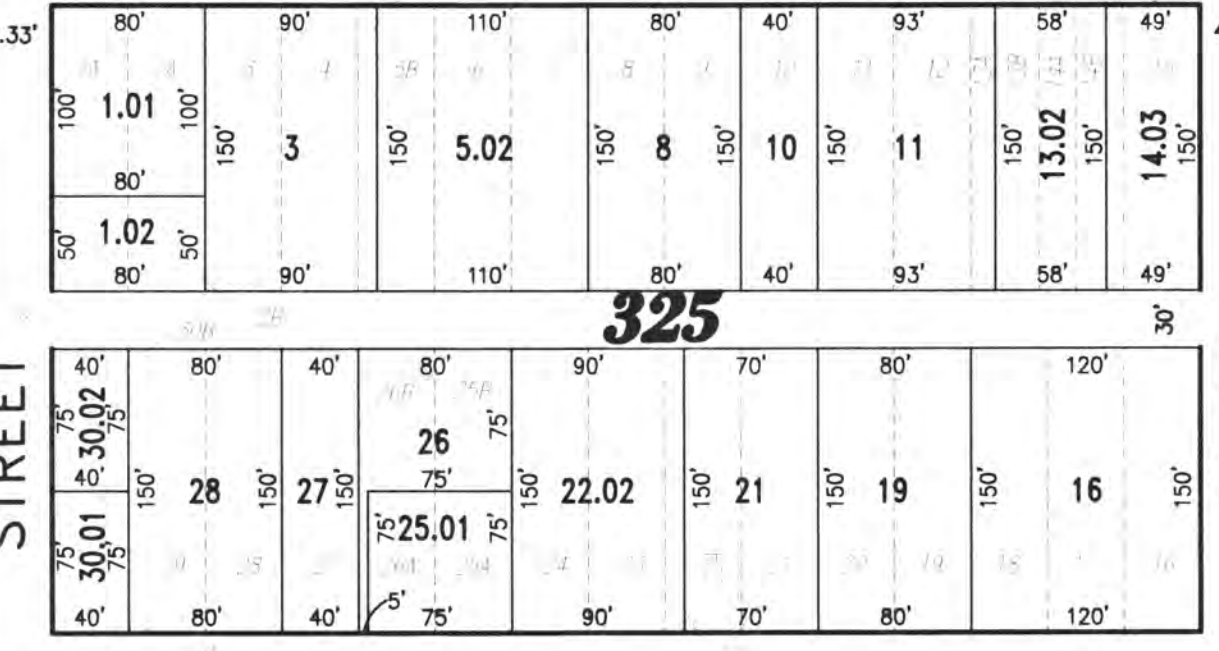
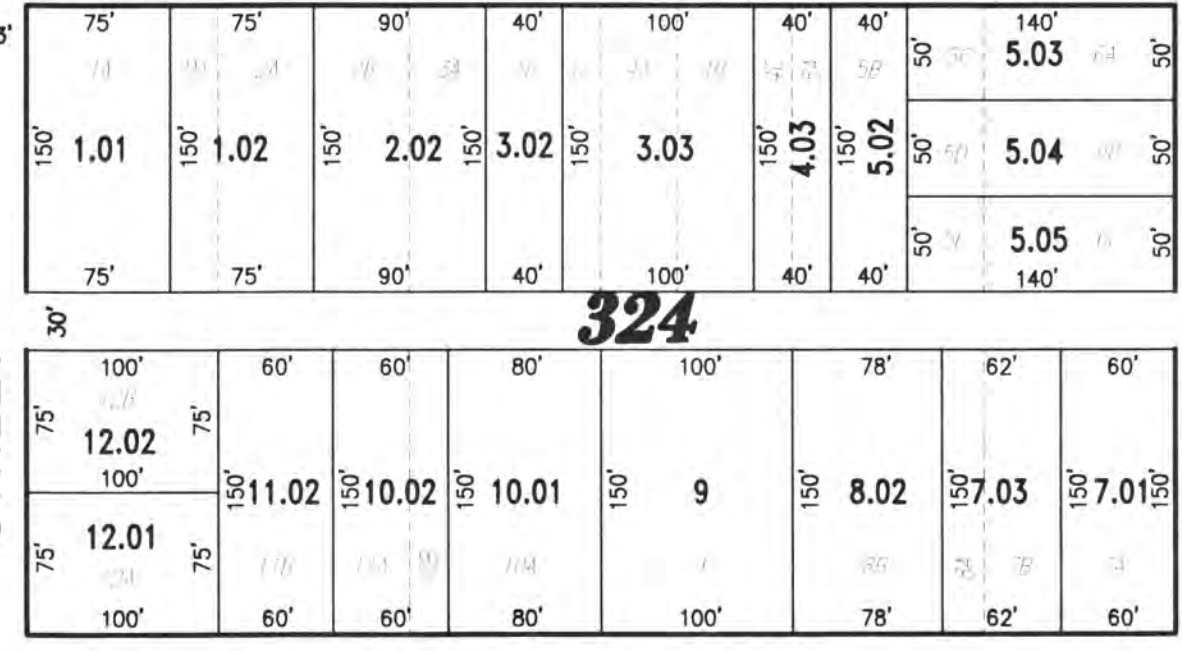


PLATE 7

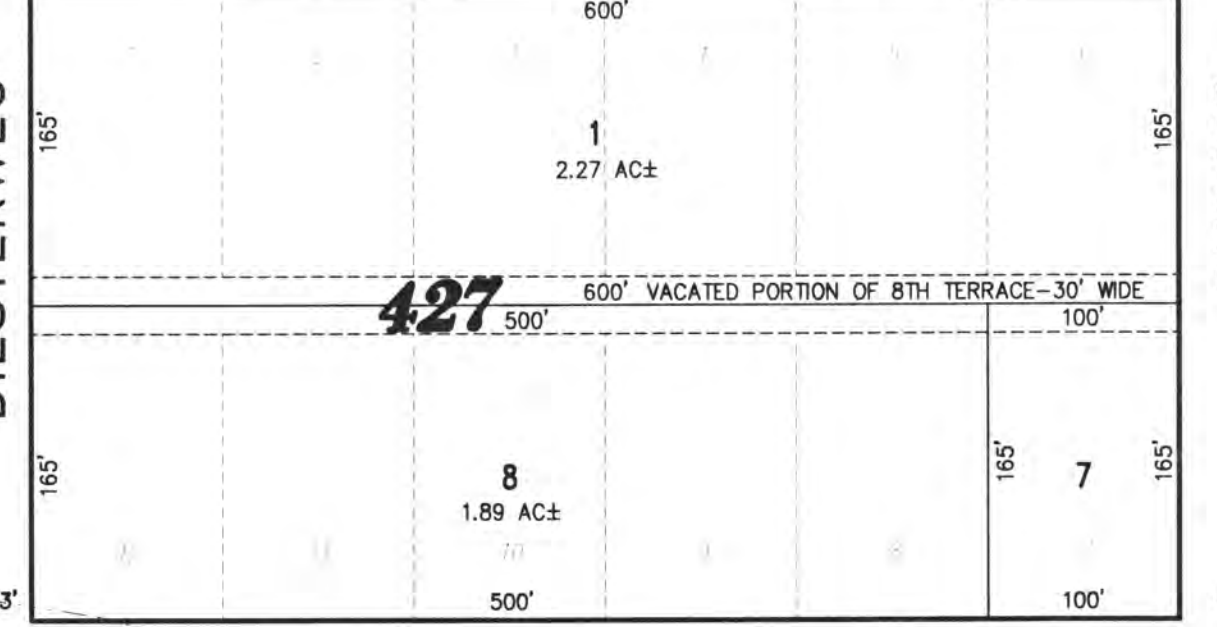
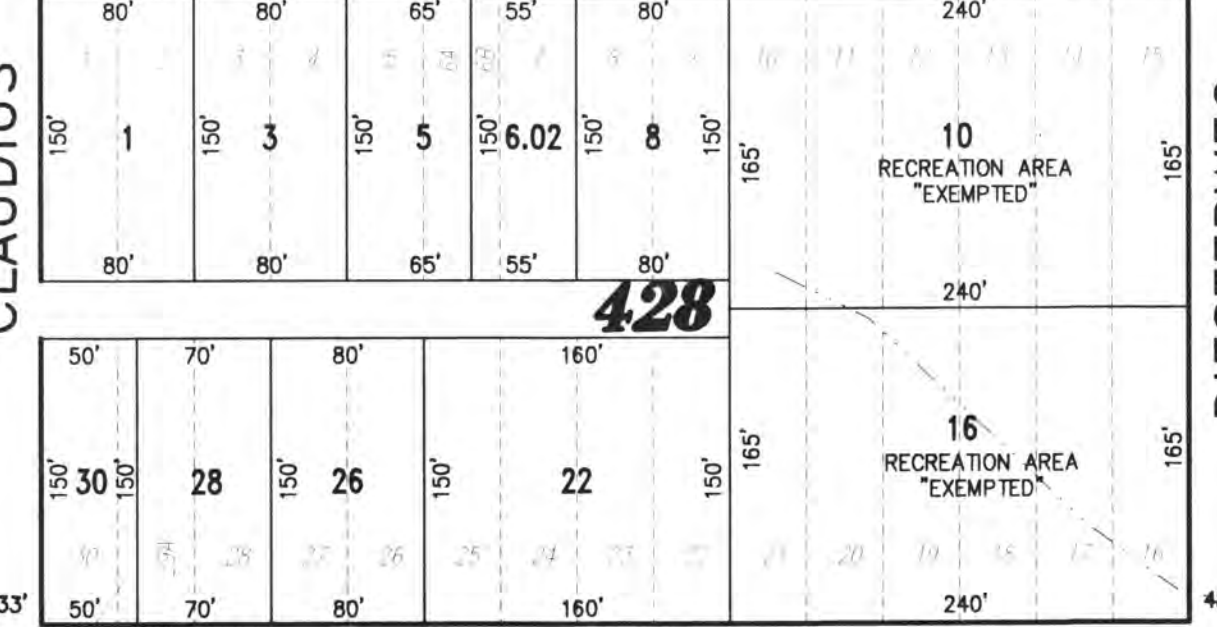
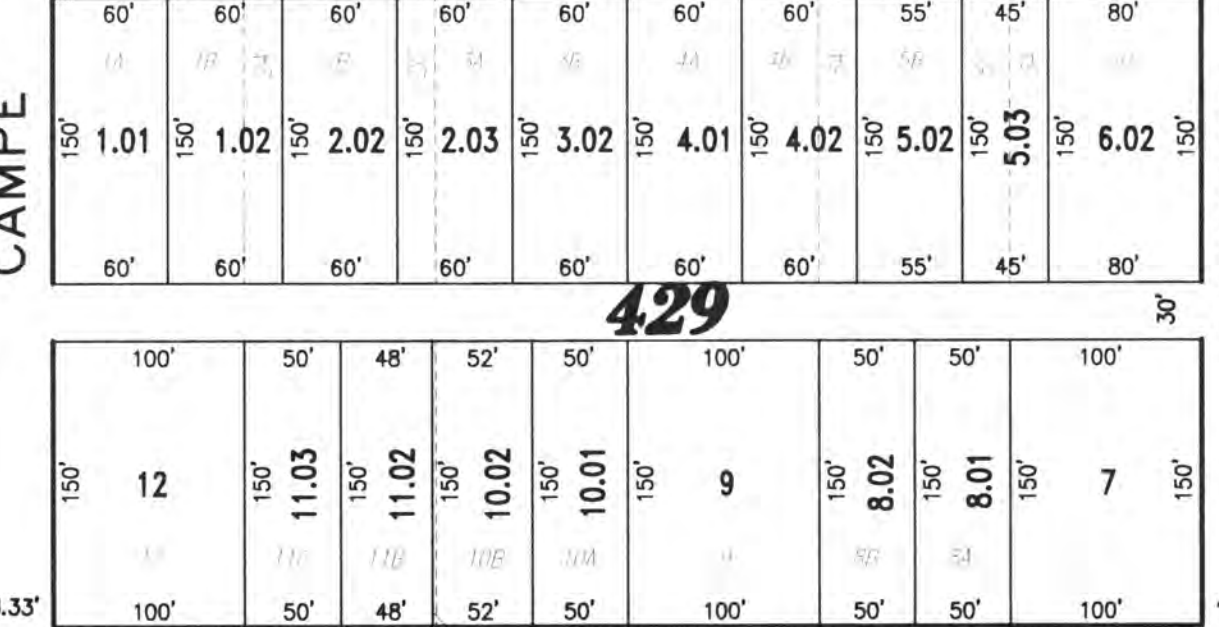
CINCINNATI AVENUE

CINCINNATI AVENUE



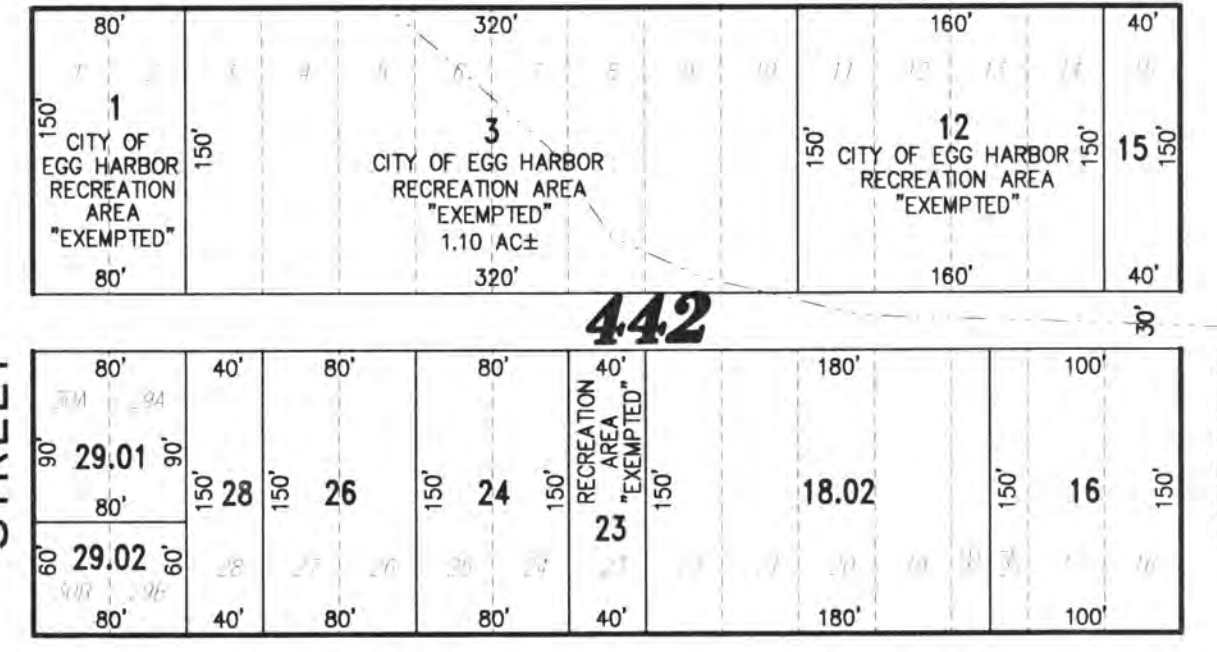
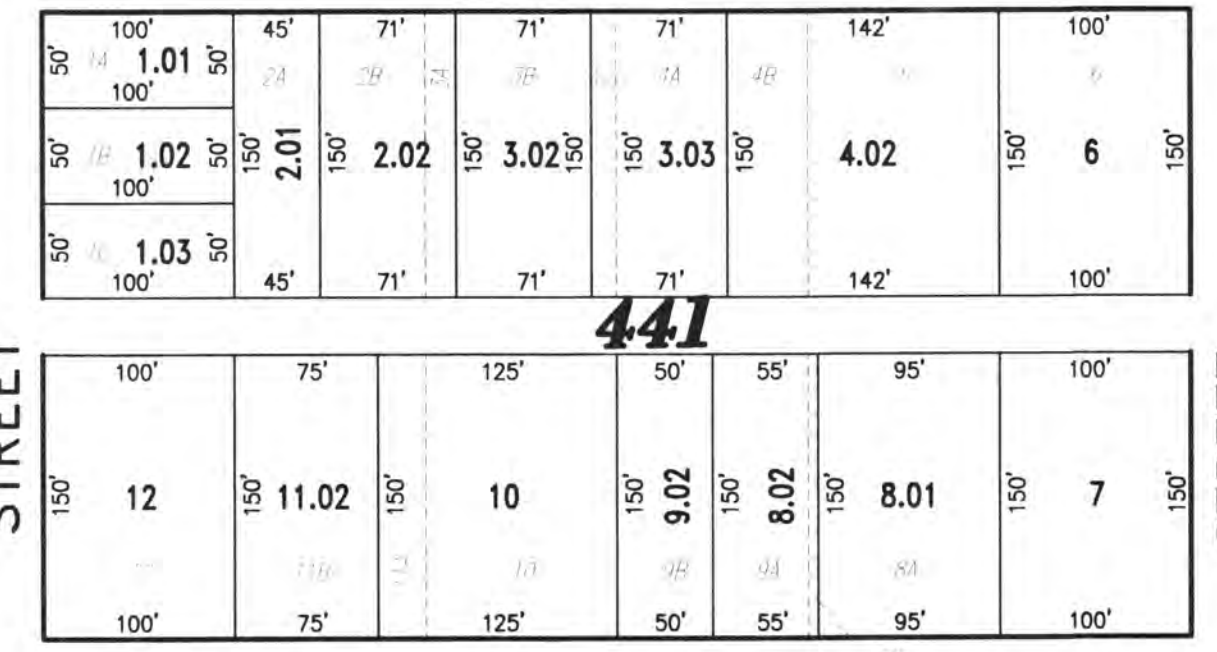
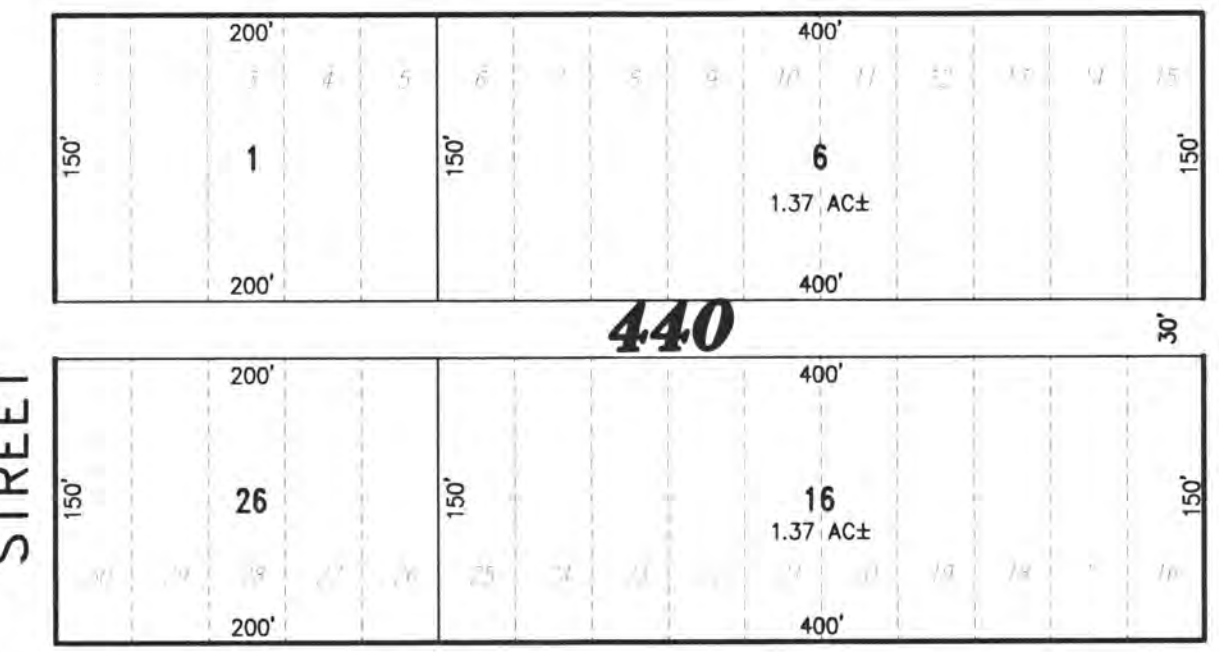
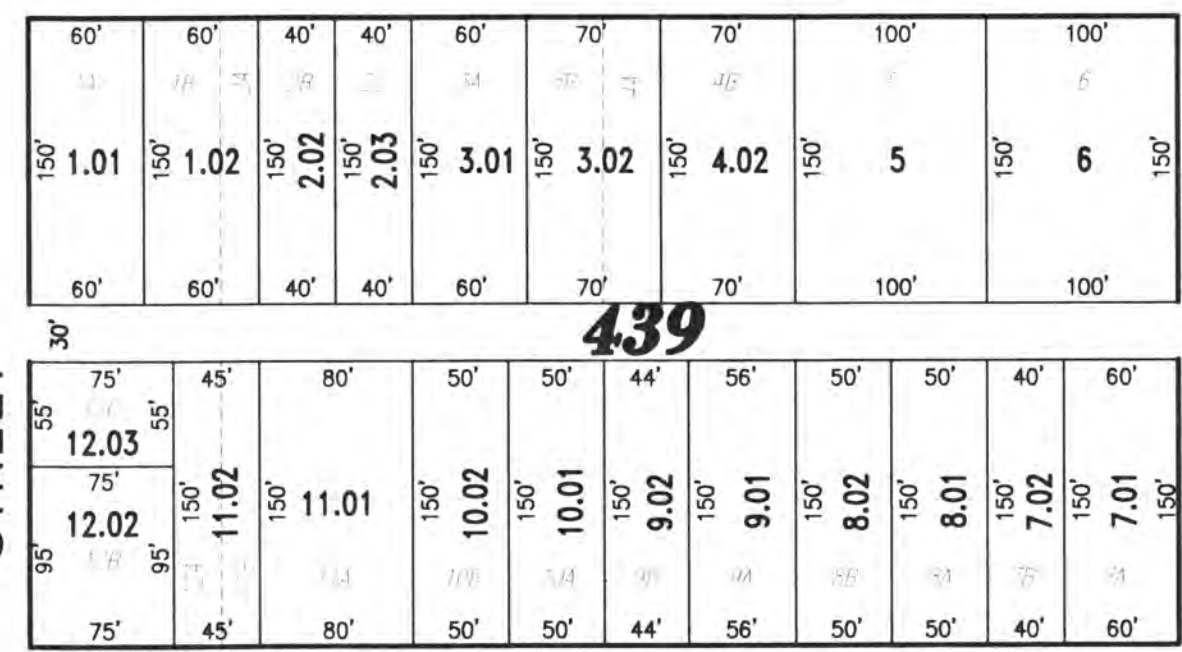
BUFFALO AVENUE

BUFFALO AVENUE



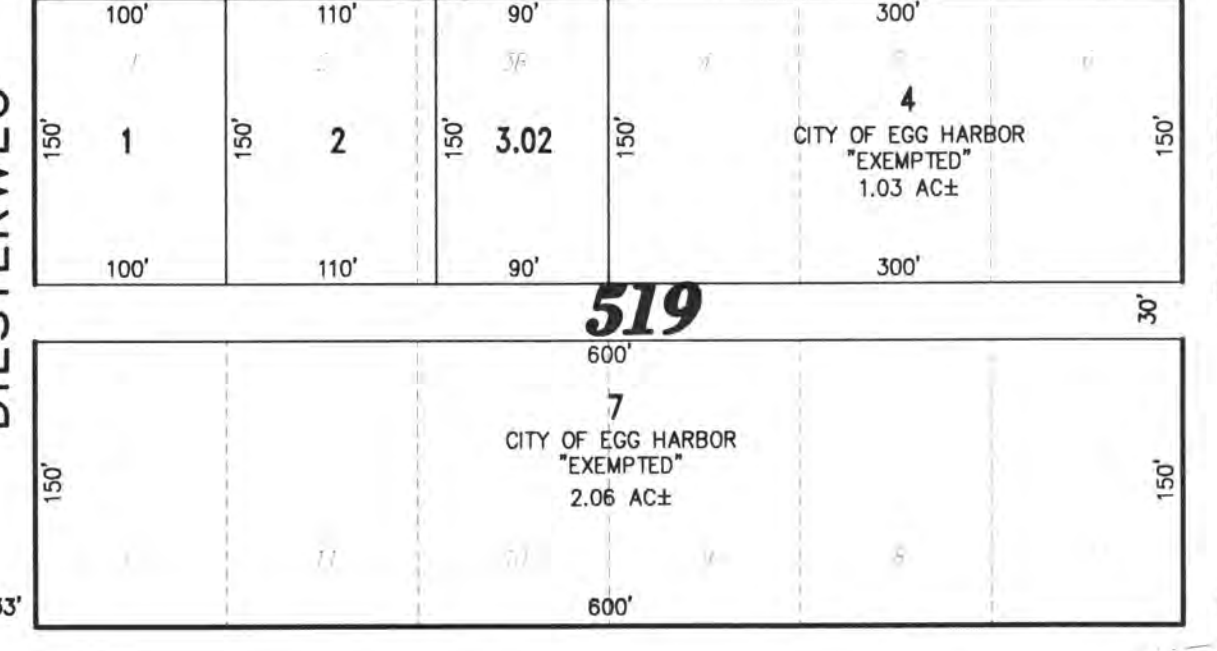
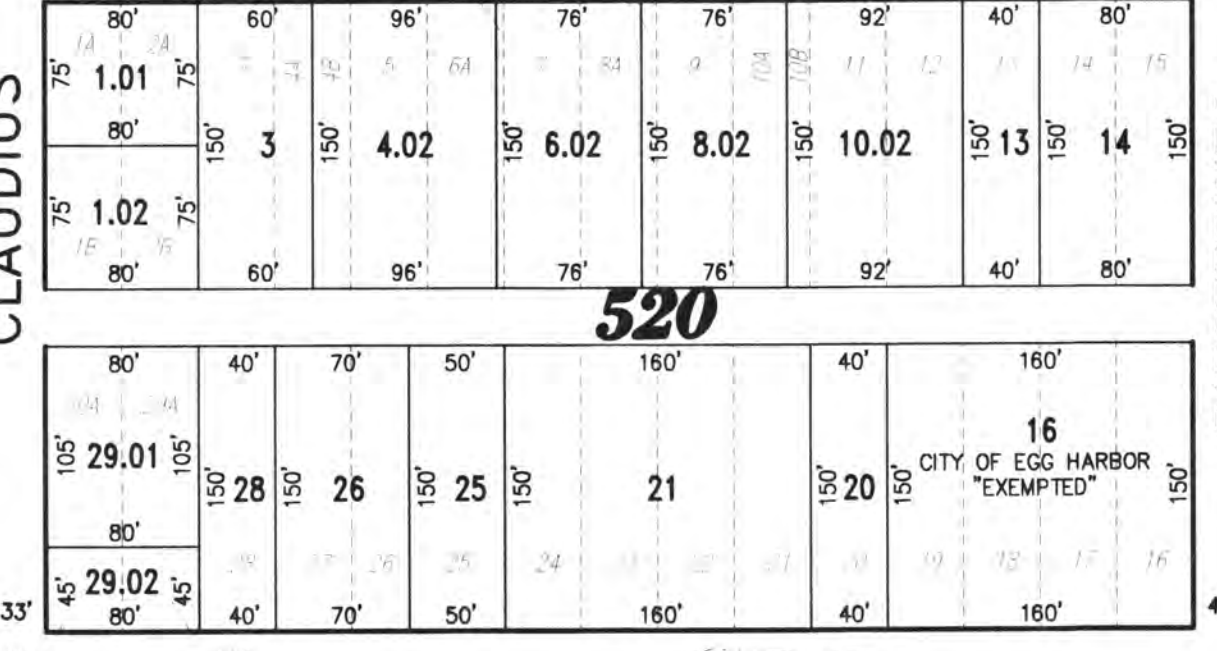
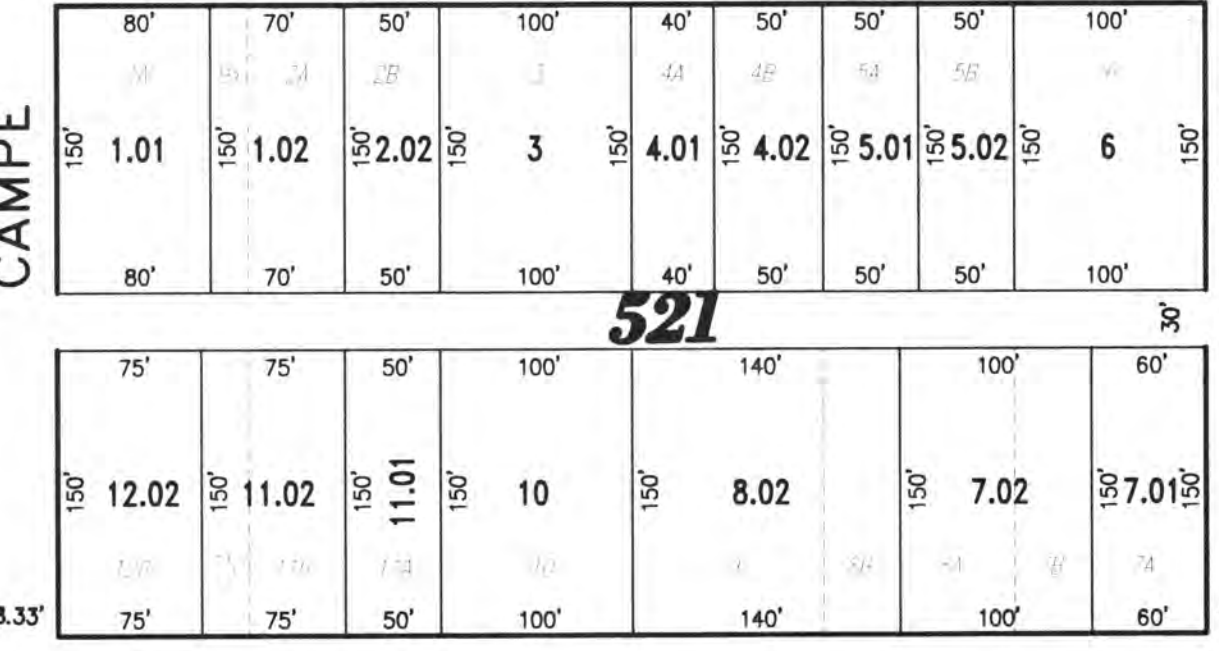
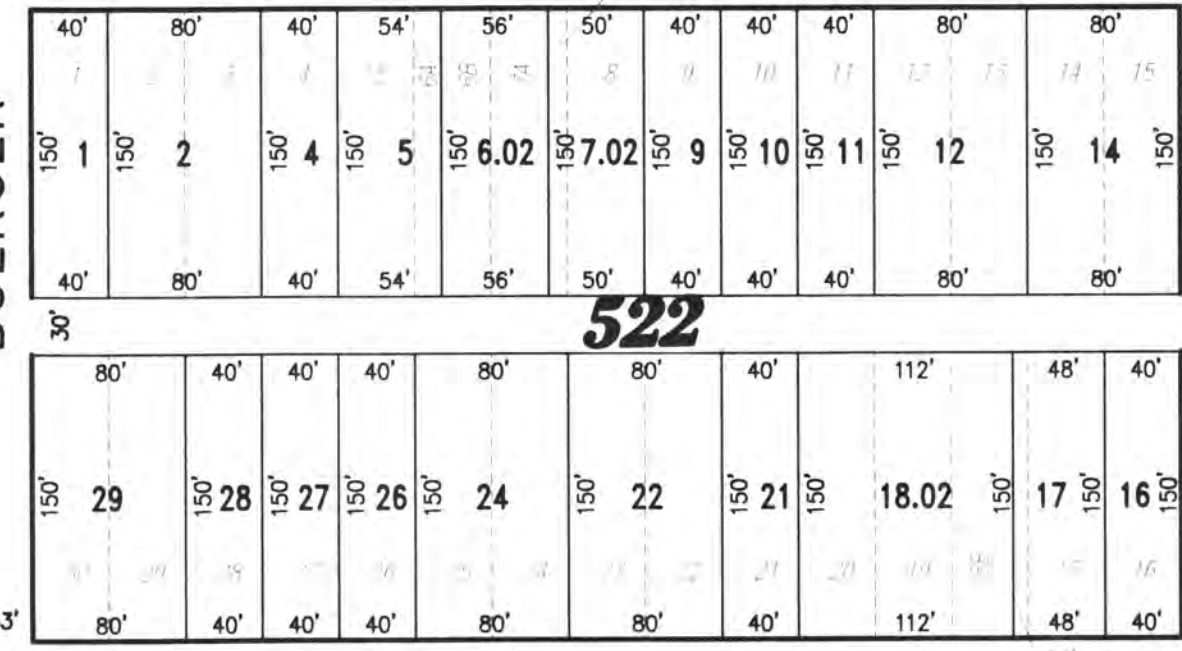
CHICAGO AVENUE

CHICAGO AVENUE



ST. LOUIS AVENUE

ST. LOUIS AVENUE



BOSTON AVENUE

BOSTON AVENUE

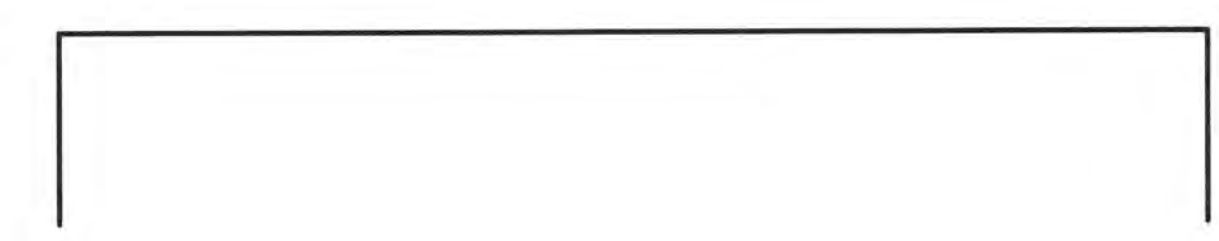


PLATE 3

PLATE 13

PLATE 9

REVISED BY REMINGTON AND VERNICK ENGINEERS - 10-18-2005, 01071323

COMBINED PLATE - OLD PLATES 23, 24, 32, 33

TAX MAP CITY OF EGG HARBOR

ATLANTIC COUNTY NEW JERSEY
SCALE: 1" = 100' DATE: 9-17-1999

CRAIG F. REMINGTON LAND SURVEYOR LIC. NO. 23924



REMINGTON, VERNICK & WALBERG ENGINEERS
845 N. MAN STREET, PLEASANTVILLE, NJ 08232
(609) 645-7100, FAX (609) 645-7076
WEB SITE ADDRESS: WWW.RVW.COM