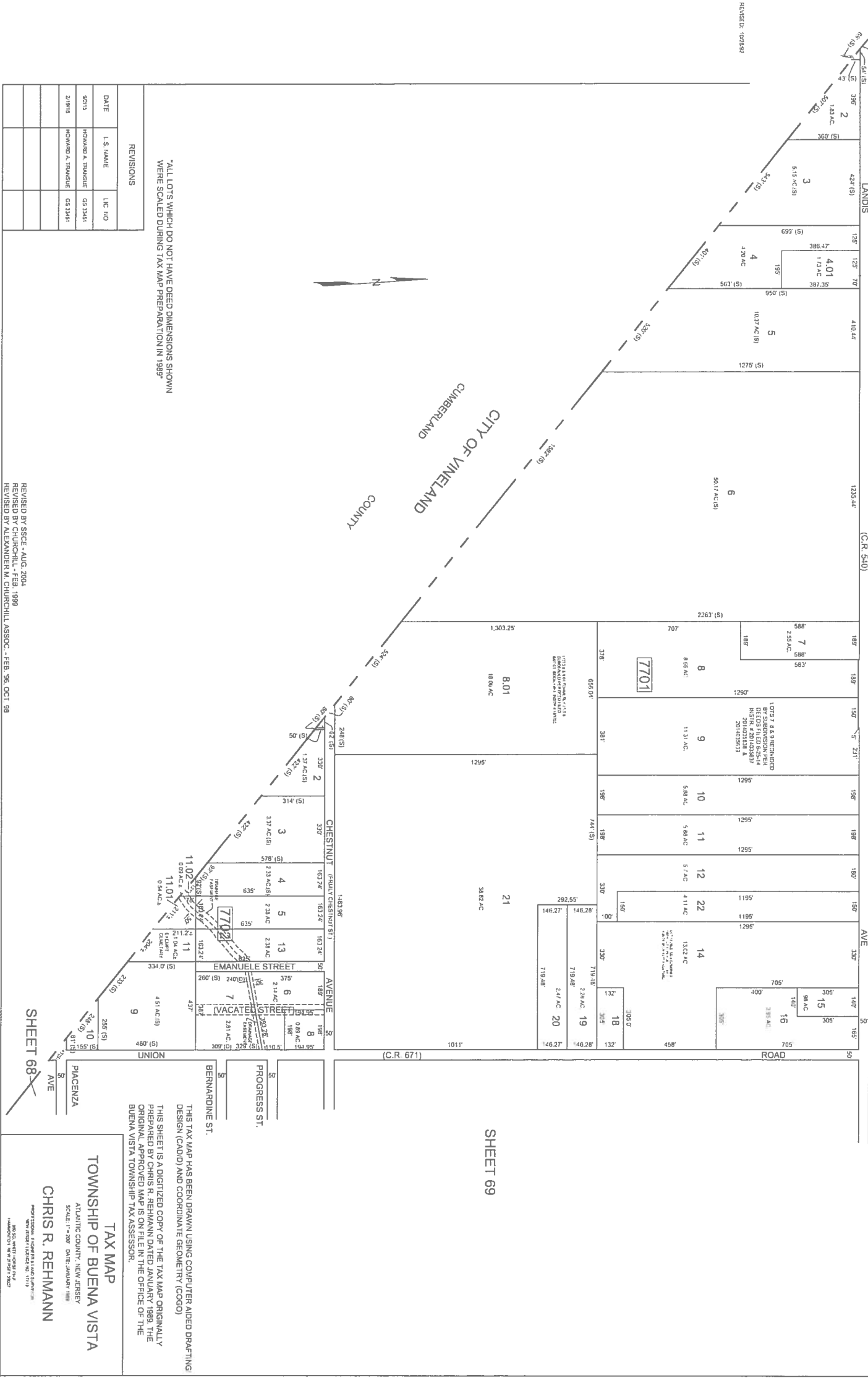


CIMINO BLVD
LEJAN TERR.
AVE



ALL LOTS WHICH DO NOT HAVE DEED DIMENSIONS SHOWN WERE SCALED DURING TAX MAP PREPARATION IN 1989

THIS TAX MAP HAS BEEN DRAWN USING COMPUTER AIDED DRAFTING DESIGN (CAD/D) AND COORDINATE GEOMETRY (COGO)
THIS SHEET IS A DIGITIZED COPY OF THE TAX MAP ORIGINALLY PREPARED BY CHRIS R. REHMANN DATED JANUARY 1989. THE ORIGINAL APPROVED MAP IS ON FILE IN THE OFFICE OF THE BUENA VISTA TOWNSHIP TAX ASSESSOR.

REVISIONS	
DATE	L.S. NAME LIC. NO.
8/2015	HOWARD A. FRANKLE GS 13451
2/1998	HOWARD A. FRANKLE GS 13451

REVISED BY ESCE - AUG. 2004
REVISED BY CHURCHILL - FEB. 1999
REVISED BY ALEXANDER M. CHURCHILL ASSOC. - FEB. 96, OCT. 98

TAX MAP
TOWNSHIP OF BUENA VISTA
ATLANTIC COUNTY, NEW JERSEY
SCALE: 1" = 200' DATE: JANUARY 1989
CHRIS R. REHMANN
PROFESSIONAL FIDUCIARY LAND SURVEYOR
NO. 302, WITH EXP. 03/31/15
HARRINGTON, NJ 07947