

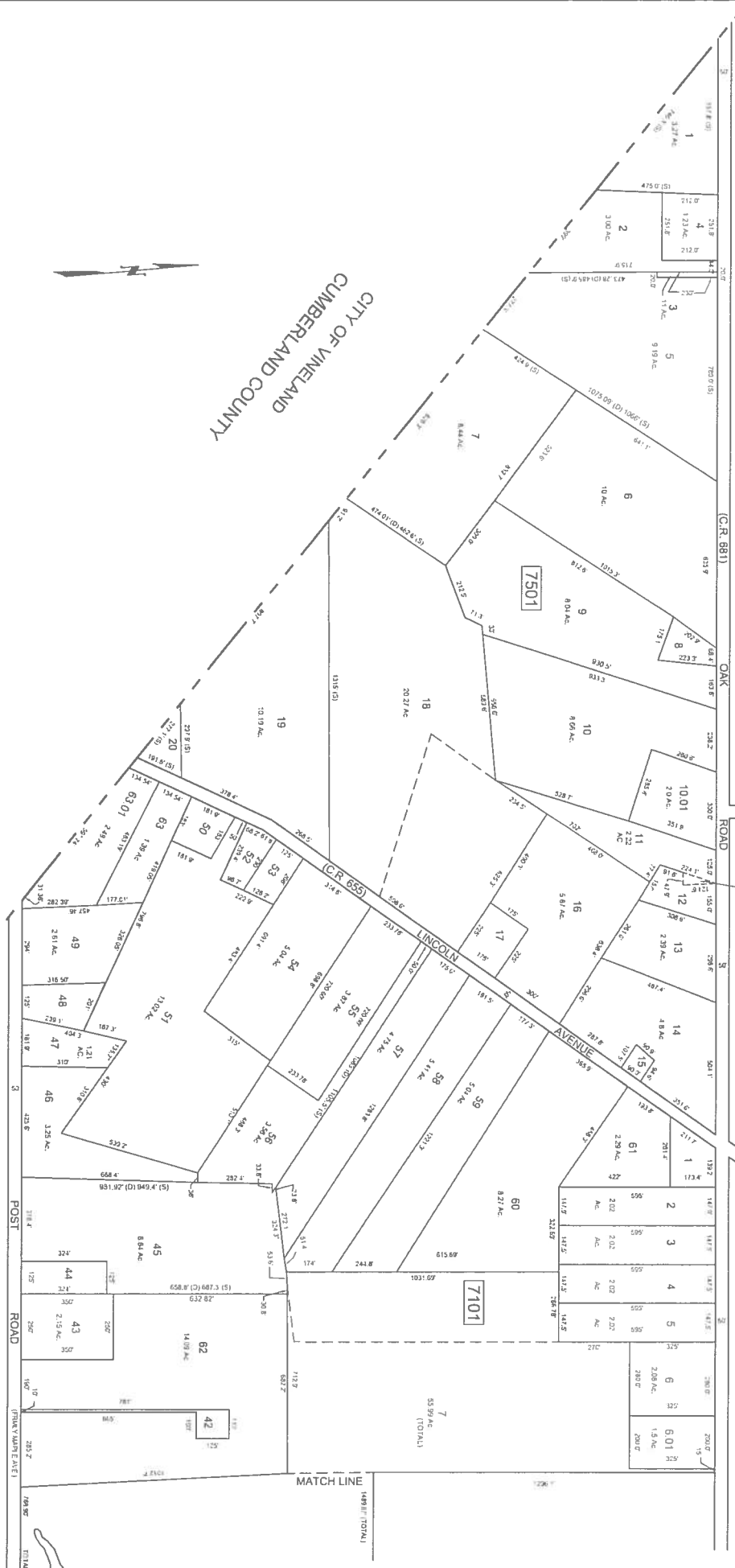
SHEET 74

SHEET 73

SHEET 72

SHEET 71

SHEET 76



CITY OF VINELAND
 CUMBERLAND COUNTY

NOTE:

THE LOTS 11 & 12, BLOCK 1, 201
 THE OVERLAPPING LINES & DIMENSIONS SHOWN ARE INTENDED IN ACCORDANCE WITH
 THE OFFICIAL RECORDS OF THE COUNTY OF DELAWARE IN THE LAST DEED OF RECORD
 FOR EACH PARCEL & DO NOT NECESSARILY REPRESENT TITLE OR OWNERSHIP STATUS
 IN ANY MANNER. THESE SOLUTIONS ARE SUBJECT TO FURTHER INVESTIGATION BY THE PROPERTY
 OWNERS CONCERNED.

ALL LOTS WHICH DO NOT HAVE DEED DIMENSIONS SHOWN
 WERE SCALED DURING TAX MAP PREPARATION IN 1989*

THIS TAX MAP HAS BEEN DRAWN USING COMPUTER AIDED DRAFTING/
 DESIGN (CAD/D) AND COORDINATE GEOMETRY (COGO)

THIS SHEET IS A DIGITIZED COPY OF THE TAX MAP ORIGINALLY
 PREPARED BY CHRIS R. REHMANN DATED JANUARY 1989. THE
 ORIGINAL APPROVED MAP IS ON FILE IN THE OFFICE OF THE
 BUENA VISTA TOWNSHIP TAX ASSESSOR.

REVISED BY: SSGE - AUG. 2004
 REVISED BY: ALEXANDER M. CHURCHILL, ASSOC. - FEB. 96, OCT. 98

REVISIONS

DATE	L.S. NAME	LIC. NO.

TAX MAP
 TOWNSHIP OF BUENA VISTA
 ATLANTIC COUNTY, NEW JERSEY

SCALE: 1" = 200' DATE: JANUARY 1989
 CHRIS R. REHMANN
 PROFESSIONAL LAND SURVEYOR & TAX ASSESSOR
 NEW JERSEY LICENSE NO. 7118
 HANOVERTON, NEW JERSEY 08040