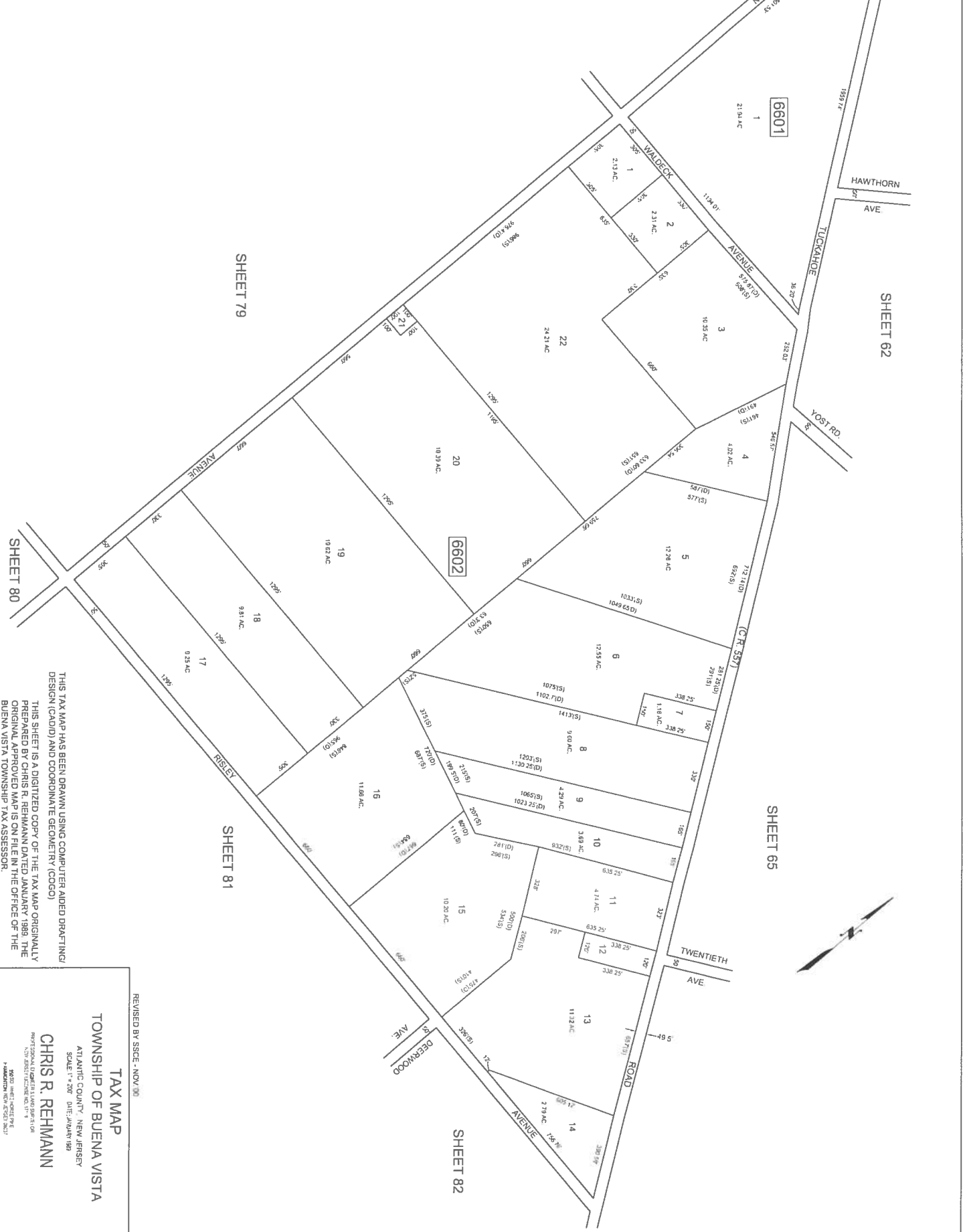


REVISIONS		
DATE	L.S. NAME	LIC. NO.



THIS TAX MAP HAS BEEN DRAWN USING COMPUTER AIDED DRAFTING DESIGN (CAD/D) AND COORDINATE GEOMETRY (COGO). THIS SHEET IS A DIGITIZED COPY OF THE TAX MAP ORIGINALLY PREPARED BY CHRIS R. REHMANN DATED JANUARY 1989. THE ORIGINAL APPROVED MAP IS ON FILE IN THE OFFICE OF THE BUENA VISTA TOWNSHIP TAX ASSESSOR.

REVISED BY SSCC - NOV. 00

TAX MAP
TOWNSHIP OF BUENA VISTA
 ATLANTIC COUNTY, NEW JERSEY
 SCALE 1" = 200' DATE JANUARY 1989

CHRIS R. REHMANN
 PROFESSIONAL ENGINEER LICENSE NO. 1719
 1570 SOUTH VICTOR ROAD
 HADDONFIELD, NEW JERSEY 08033