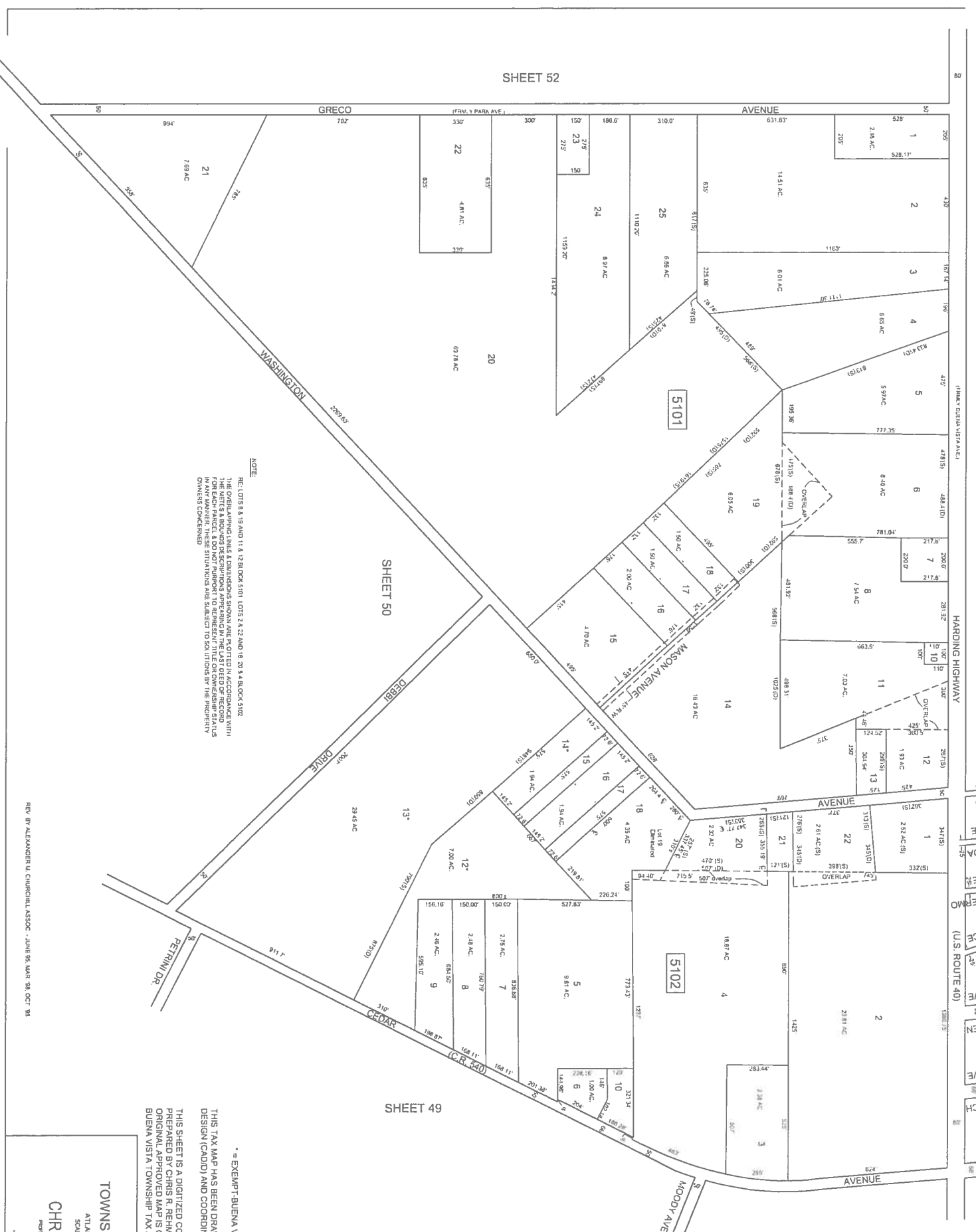


REVISIONS		
DATE	LS NAME	LIC NO



NOTE:  
 REC LOTS 8 & 19 AND 11 & 12 BLOCK 5101, LOTS 2 & 23 AND 16, 20 & 4 BLOCK 5102.  
 THE OVERLAPPING LINES & DIMENSIONS SHOWN ARE PLOTTED IN ACCORDANCE WITH  
 THE ORIGINAL RECORDS OF THE TOWNSHIP TAX ASSESSOR. THESE DIMENSIONS ARE NOT  
 TO BE USED FOR EASEMENTS OR ENCROACHMENTS. THE DIMENSIONS SHOWN ARE FOR  
 EACH PARCEL, AND DO NOT PURPORT TO REPRESENT THE OVERSEASER'S STATUS  
 IN ANY MANNER. THESE SITUATIONS ARE SUBJECT TO SOLUTIONS BY THE PROPERTY  
 OWNERS CONCERNED.

- EXEMPT-BUENA VISTA TOWNSHIP  
 THIS TAX MAP HAS BEEN DRAWN USING COMPUTER AIDED DRAFTING  
 DESIGN (CAD/D) AND COORDINATE GEOMETRY (COGO)  
 THIS SHEET IS A DIGITIZED COPY OF THE TAX MAP ORIGINALLY  
 PREPARED BY CHRISTA REHMANN DATED JANUARY 1989. THE  
 ORIGINAL RECORDS ARE ON FILE IN THE OFFICE OF THE  
 BUENA VISTA TOWNSHIP TAX ASSESSOR.

TAX MAP  
 TOWNSHIP OF BUENA VISTA  
 ATLANTIC COUNTY, NEW JERSEY  
 SCALE: 1"=200' DATE: JANUARY 98

CHRIS R. REHMANN

REV BY ALEXANDER W. CHURCHILL, ASSOC. - JUNE 95, JAN 96, OCT '98