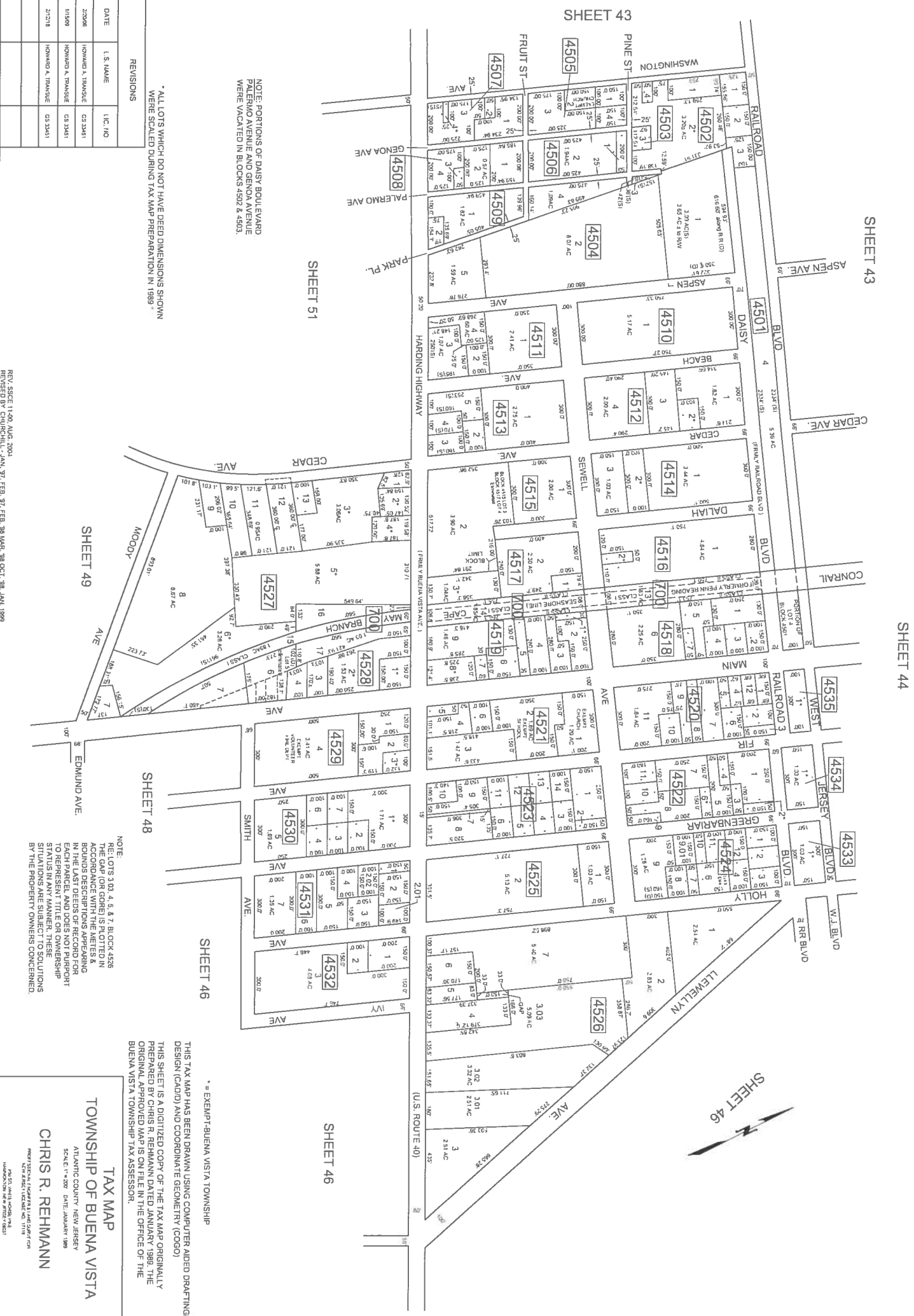


SHEET 43

SHEET 44

SHEET 43



NOTE: PORTIONS OF DAISY BOULEVARD PALERMO AVENUE AND SEWELL AVENUE WERE VACATED IN BLOCKS 4502 & 4503.

* ALL LOTS WHICH DO NOT HAVE DEED DIMENSIONS SHOWN WERE SCALED DURING TAX MAP PREPARATION IN 1989 *

NOTE:
RE: LOTS 3 03, 4, 5, 6, 7, BLOCK 4526
THE GAP (OR GORE) IS PLOTTED IN
ACCORDANCE WITH THE METES &
BOUNDS DESCRIPTIONS APPEARING
ON THE ORIGINAL TAX MAP. THE
EACH PARCEL AND DOES NOT PURPORT
TO REPRESENT TITLE OR OWNERSHIP
STATUS IN ANY MANNER. THESE
SITUATIONS ARE SUBJECT TO SOLUTIONS
BY THE PROPERTY OWNERS CONCERNED.

THIS TAX MAP HAS BEEN DRAWN USING COMPUTER AIDED DRAFTING DESIGN (CADD) AND COORDINATE GEOMETRY (COGO). THIS SHEET IS A DIGITIZED COPY OF THE TAX MAP ORIGINALLY PREPARED BY CHRIS R. REHMANN DATED JANUARY 1989. THE ORIGINAL APPROVED MAP IS ON FILE IN THE OFFICE OF THE BUENA VISTA TOWNSHIP TAX ASSESSOR.

TAX MAP
TOWNSHIP OF BUENA VISTA
ATLANTIC COUNTY NEW JERSEY
SCALE: 1" = 200' DATE: JANUARY 1989

CHRIS R. REHMANN

REVISIONS	
DATE	L.C. NO
2/20/86	HOWARD A. THOMAS
11/05/89	HOWARD A. THOMAS
2/22/88	HOWARD A. THOMAS

REV. SSCCE 11-06, AUG. 2004
REVISED BY CHURCHILL, JAN. 97, FEB. 97, FEB. 98, MAR. 98, OCT. 98, JAN. 1999