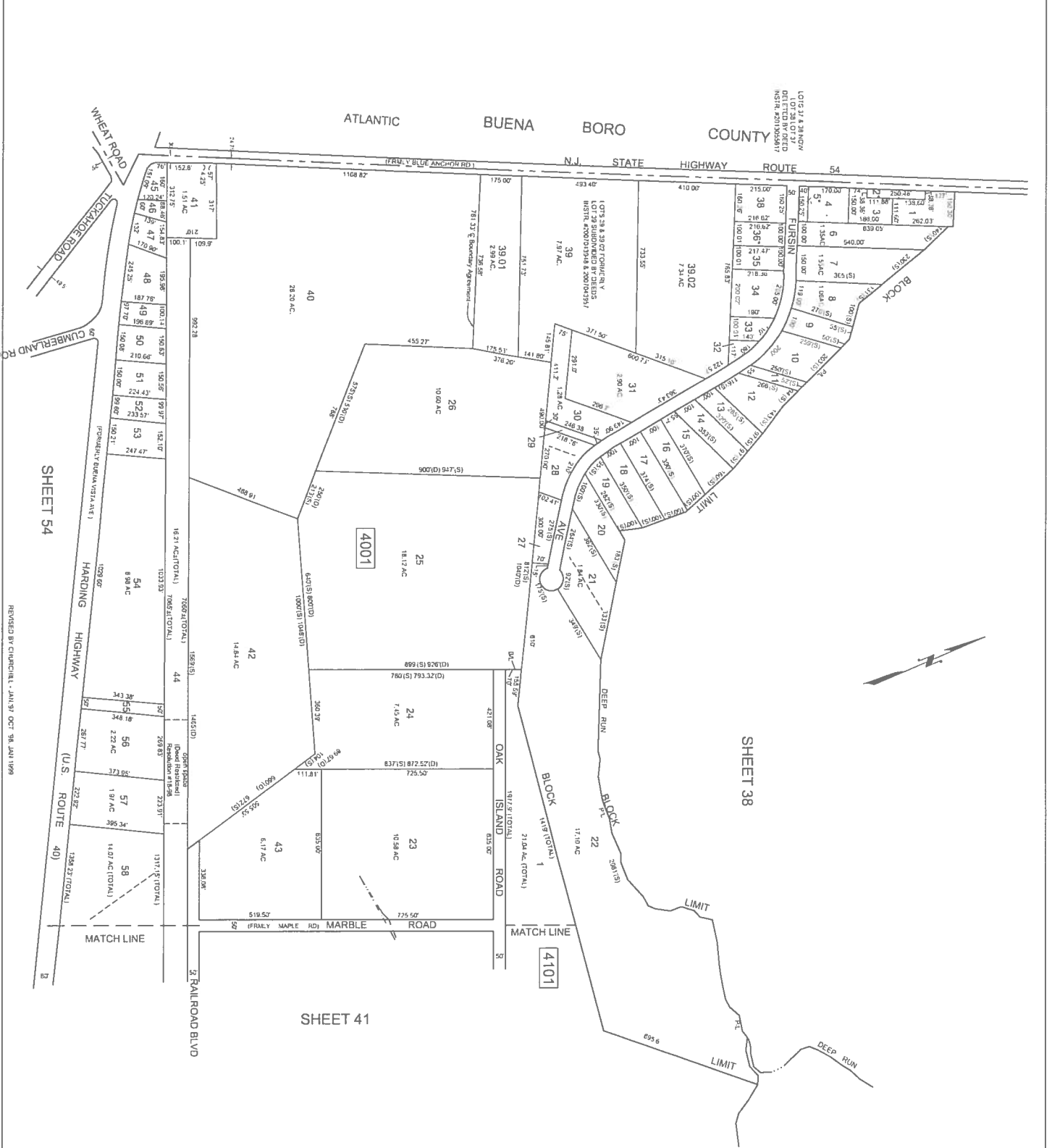


REVISIONS		
DATE	L.S. NAME	LIC. NO.
6/2/99	HOWARD A. TRAMBLE	03 3451
9/2/15	HOWARD A. TRAMBLE	03 3451



\* ALL LOTS WHICH DO NOT HAVE DEED DIMENSIONS SHOWN WERE SCALED DURING TAX MAP PREPARATION IN 1989\*

\* = EXEMPT-BUENA VISTA TOWNSHIP  
THIS TAX MAP HAS BEEN DRAWN USING COMPUTER AIDED DRAFTING/DESIGN (CAD/D) AND COORDINATE GEOMETRY (COGO)

THIS SHEET IS A DIGITIZED COPY OF THE TAX MAP ORIGINALLY PREPARED BY CHRIS R. REHMANN DATED JANUARY 1989. THE ORIGINAL APPROVED MAP IS ON FILE IN THE OFFICE OF THE BUENA VISTA TOWNSHIP TAX ASSESSOR.

**TAX MAP**  
**TOWNSHIP OF BUENA VISTA**  
ATLANTIC COUNTY, NEW JERSEY  
SCALE: 1" = 200' DATE: JANUARY 89  
**CHRIS R. REHMANN**  
1980 UNION COUNTY ROAD 1119  
NEW PLYMOUTH, NJ 08758  
P.O. BOX 1000, NEW PLYMOUTH, NJ 08758

REVISOR BY COUNCILMET. JAN/89 OCT 98, JAN 1999