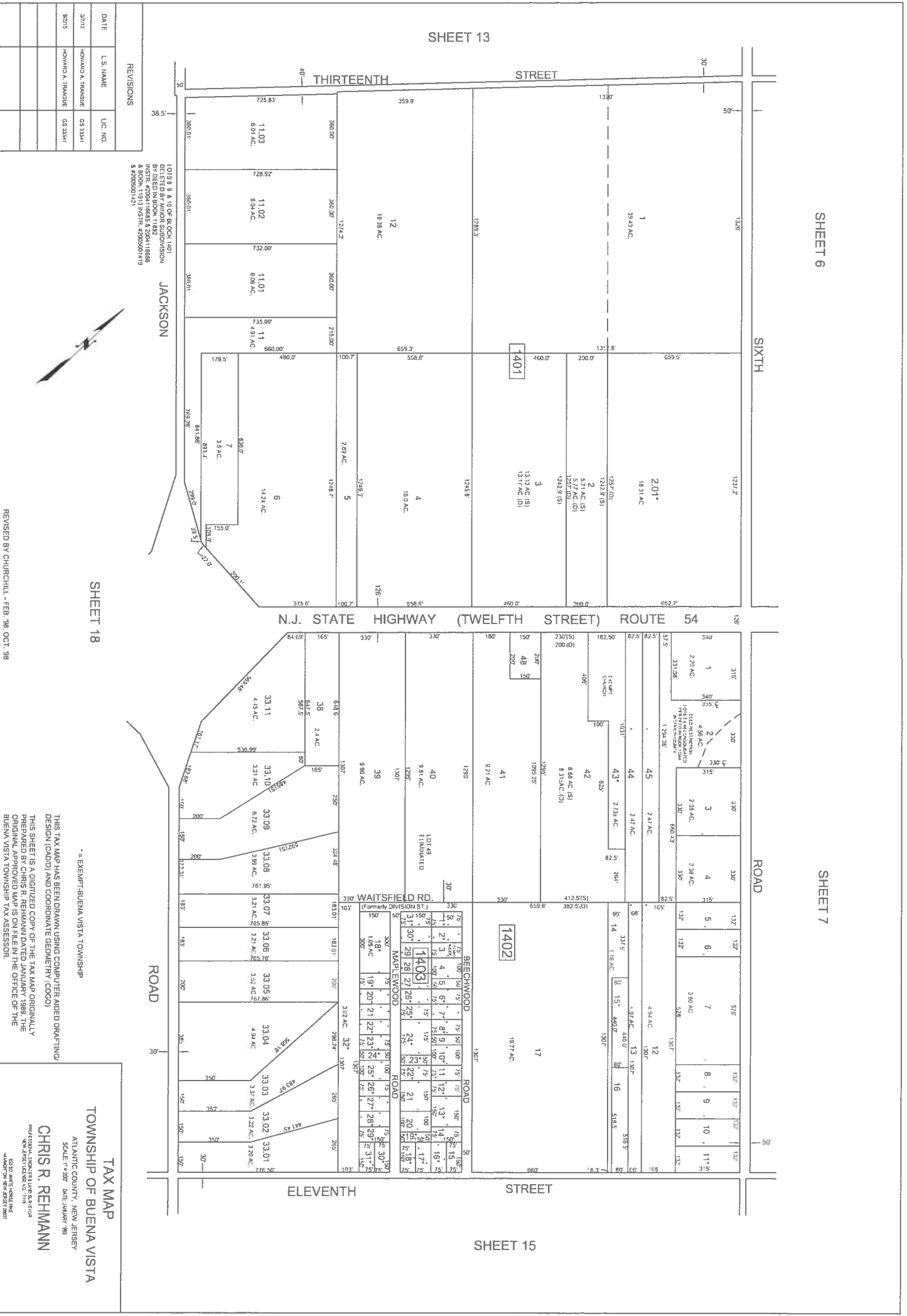


SHEET 6

SHEET 7

SHEET 13

SHEET 15



LOIS B. & J. G. OF CO. INC. 1971
 DOTTED BY JUNIOR SUBDIVISION
 BY DEED IN BOOK 11882
 INSTR. #2004116685 & 2004116686
 INSTR. #2004116687 & 2004116688
 & #2005001413
 & #2005001412

JACKSON

SHEET 18

EXEMPT-BUENA VISTA TOWNSHIP

TAX MAP
 TOWNSHIP OF BUENA VISTA
 ATLANTIC COUNTY, NEW JERSEY
 SCALE: 1" = 200'

CHRIS R. REHMANN

1064 FEDERAL INTERSTATE BANK BLDG
 NEW JERSEY TAX MAP DIVISION
 400 WEST WASHINGTON ST.
 PHILADELPHIA, PA 19106

THIS TAX MAP HAS BEEN DRAWN USING COMPUTER AIDED DRAFTING
 DESIGN (CAD/D) AND COORDINATE GEOMETRY (COGO)
 THIS SHEET IS A DIGITIZED COPY OF THE TAX MAP ORIGINALLY
 PREPARED BY CHRIS R. REHMANN DATED JANUARY 1989. THE
 ORIGINAL APPROVED MAP IS ON FILE IN THE OFFICE OF THE
 BUENA VISTA TOWNSHIP TAX ASSESSOR.

REVISED BY CHURCHILL - FEB. 98, OCT. '98

REVISIONS

DATE	L.S. NAME	L.C. NO.
JUN 12	HOWARD A. TRANQUIE	05 33541
9/27/15	HOWARD A. TRANQUIE	05 33541

REV. 5/20/92
 REV. 10/28/92
 REV. 5/13/93