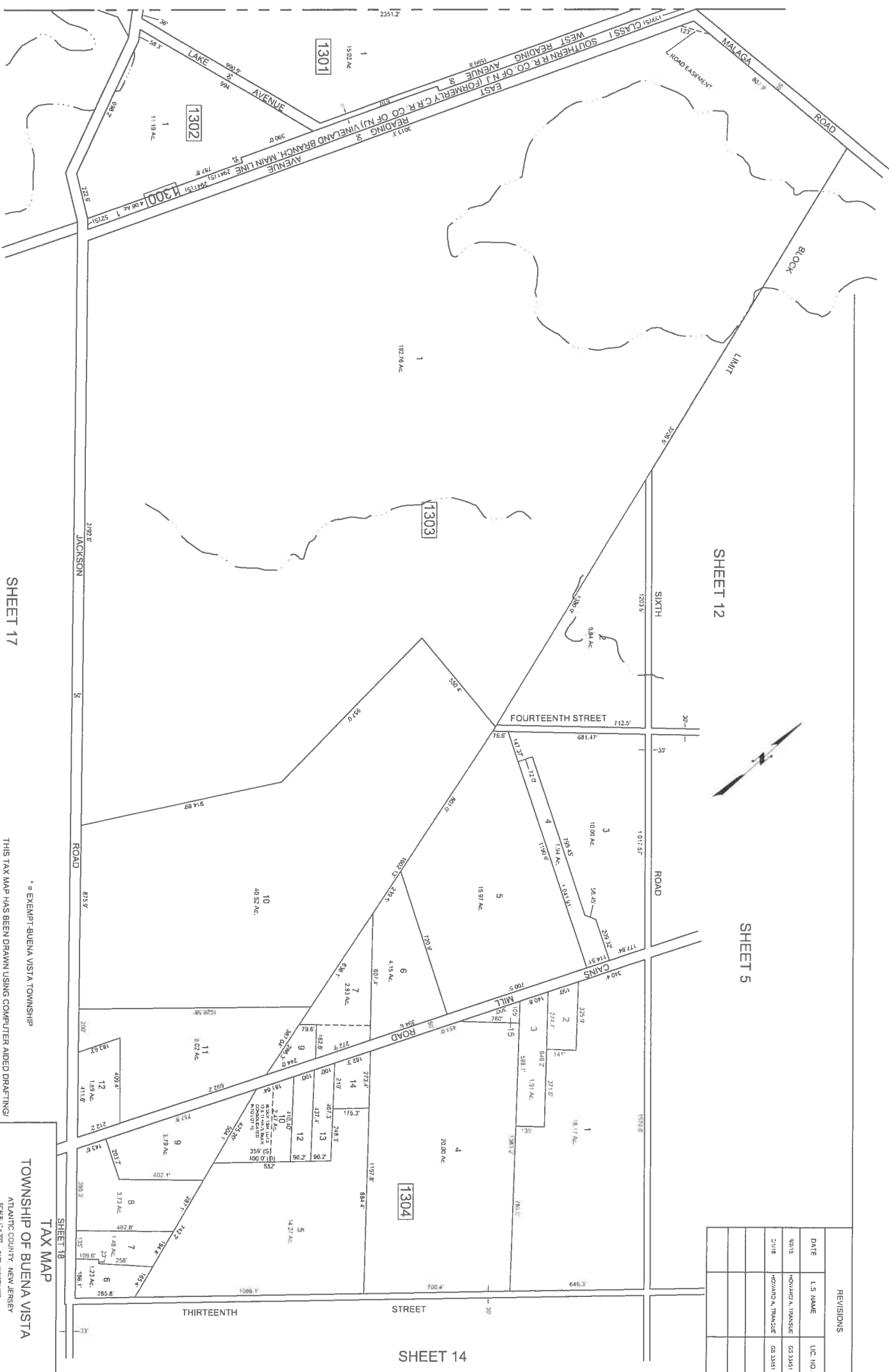


MONROE TOWNSHIP

GLOUCESTER COUNTY



SHEET 12

SHEET 5

SHEET 14

SHEET 17

REVISIONS		
DATE	L.S. NAME	L.I.C. NO.
2015	HOWARD A. TRANSCIE	03 2451
21118	HOWARD A. TRANSCIE	03 2451

* = EXEMPT-BUENA VISTA TOWNSHIP

THIS TAX MAP HAS BEEN DRAWN USING COMPUTER AIDED DRAFTING/ DESIGN (CAD/D) AND COORDINATE GEOMETRY (COGO)

THIS SHEET IS A DIGITIZED COPY OF THE TAX MAP ORIGINALLY PREPARED BY CHRIS R. REHMANN DATED JANUARY 1989. THE ORIGINAL APPROVED MAP IS ON FILE IN THE OFFICE OF THE BUENA VISTA TOWNSHIP TAX ASSESSOR.

TOWNSHIP OF BUENA VISTA
TAX MAP

CHRIS R. REHMANN
PROFESSIONAL LAND SURVEYOR
NEW JERSEY LICENSE NO. 7118
4010 WIRTH CIRCLE
HADDONFIELD, NEW JERSEY 08033

REVISION BY COUNCIL 1007 '98