

SHEET 8

TENTH

STREET



SHEET 15

SIXTH ROAD

KENNEDY DR.

NINTH

WOODBURY ROAD

WEST STREET

904

902

20.01
19.92 AC.

20
19.92 AC.

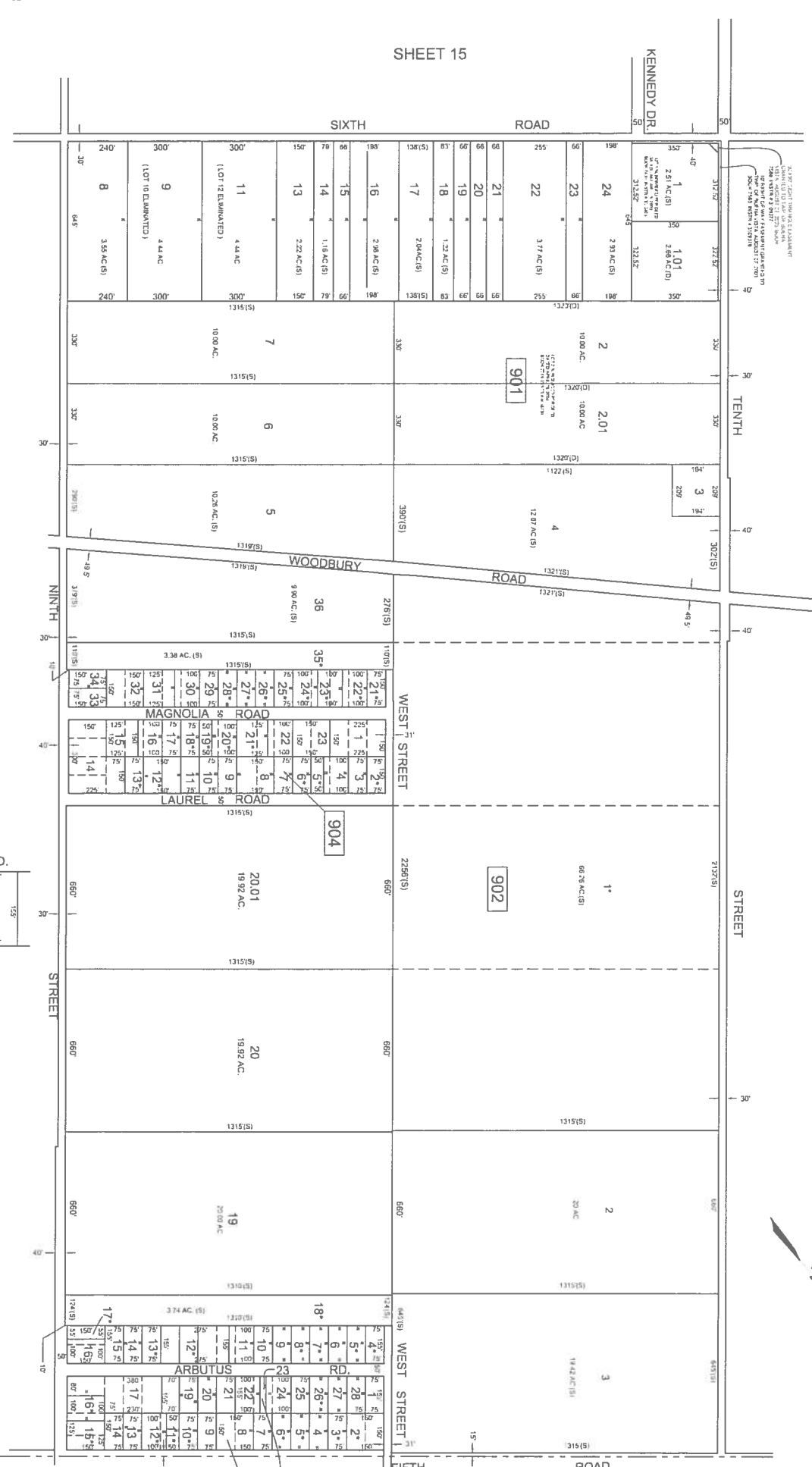
19
20.00 AC.

18

903

SEE INSET "A"

BOROUGH OF FOLSOM
ATLANTIC COUNTY



REVISIONS

DATE	L.S. NAME	L.I.C. NO.

SHEET 10

ARBUSUS RD.	
81	24
82	23
83	22
84	21
85	20
86	19
87	18
88	17
89	16
90	15
91	14
92	13
93	12
94	11
95	10
96	9
97	8
98	7
99	6
100	5
101	4
102	3
103	2
104	1

INSET "A"

N.T.S.

THIS TAX MAP HAS BEEN DRAWN USING COMPUTER AIDED DRAFTING/ DESIGN (CAD/D) AND COORDINATE GEOMETRY (COGO)

REVISOR BY SACSE - JULY 2004
REVISOR BY ALEXANDER W. CHURCHILL ASSOC. - JUNE 98, FEB. 96

TAX MAP
TOWNSHIP OF BUENA VISTA

ATLANTIC COUNTY, NEW JERSEY
SCALE: 1" = 500' DATE: JANUARY 1998
CHRIS R. REHMANN
PROFESSIONAL ENGINEER & LAND SURVEYOR
NEW JERSEY LICENSE NO. 17119
430 WHITE HORSE PINE
HAMILTON, NEW JERSEY 08621

THIS SHEET IS A DIGITIZED COPY OF THE TAX MAP ORIGINALLY PREPARED BY CHRIS R. REHMANN DATED JANUARY 1998. THE ORIGINAL APPROVED MAP IS ON FILE IN THE OFFICE OF THE BUENA VISTA TOWNSHIP TAX ASSESSOR.

* EXEMPT BUENA VISTA TOWNSHIP.