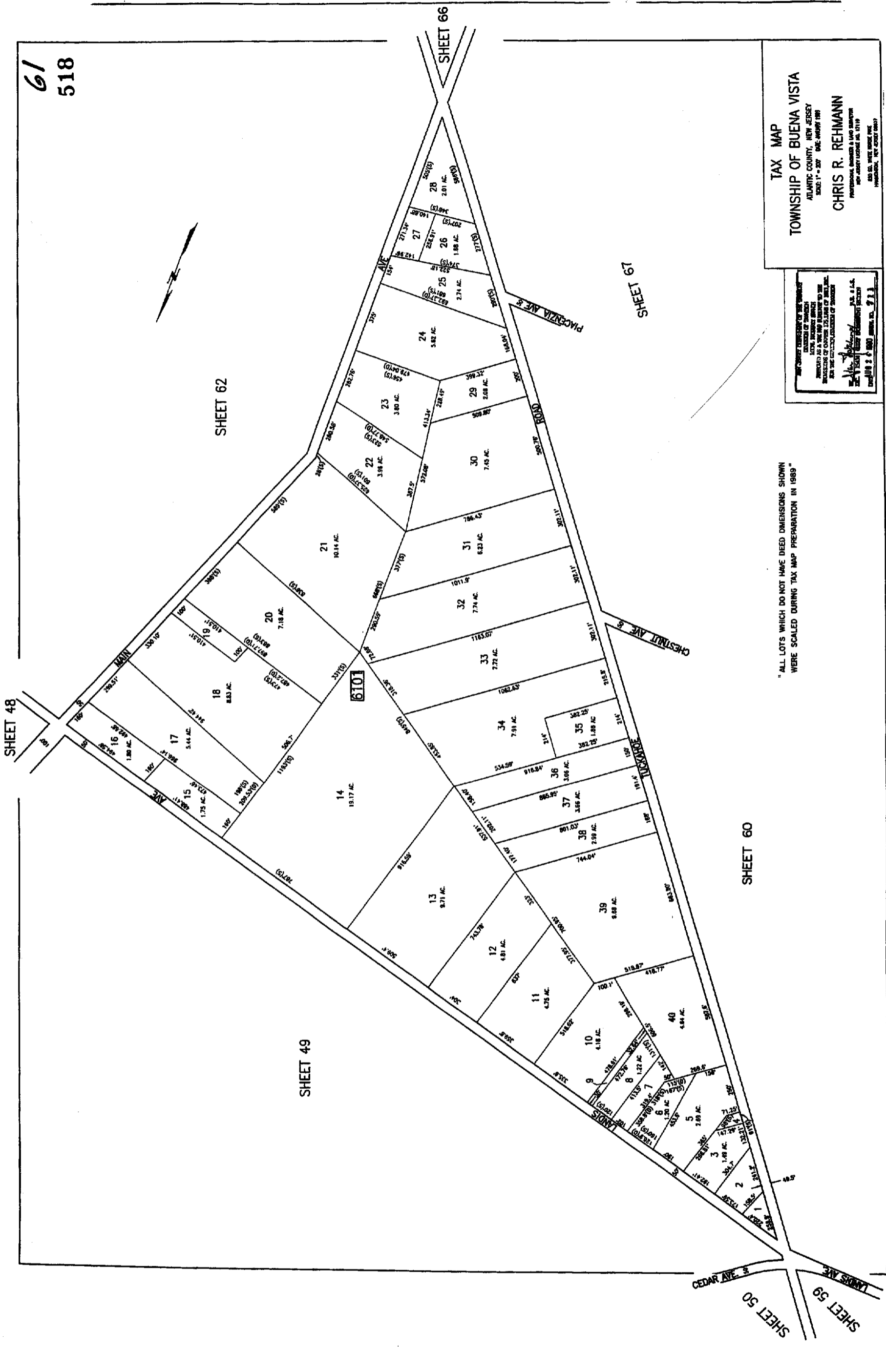


61
518



TAX MAP
TOWNSHIP OF BUENA VISTA
 ATLANTIC COUNTY, NEW JERSEY
 SCALE: 1" = 200' DATE: JANUARY 1989
CHRIS R. REHMANN
 PROFESSIONAL SURVEYOR & LAND ENGINEER
 NEW JERSEY LICENSE NO. 17119
 HONOLULU, HAWAII 96813

"I, the undersigned, being duly sworn, depose and say that I am a duly licensed Professional Surveyor and Land Engineer in the State of New Jersey, and that I am the author of the above map, and that the same is a true and correct copy of the original map as filed in my office, and that I have not been furnished with any other information which would require a change in the above map."
 CHRIS R. REHMANN, P.E., S.L.E.
 200 WEST 10TH STREET, SUITE 200
 HONOLULU, HAWAII 96813

"ALL LOTS WHICH DO NOT HAVE DEED DIMENSIONS SHOWN WERE SCALED DURING TAX MAP PREPARATION IN 1989"