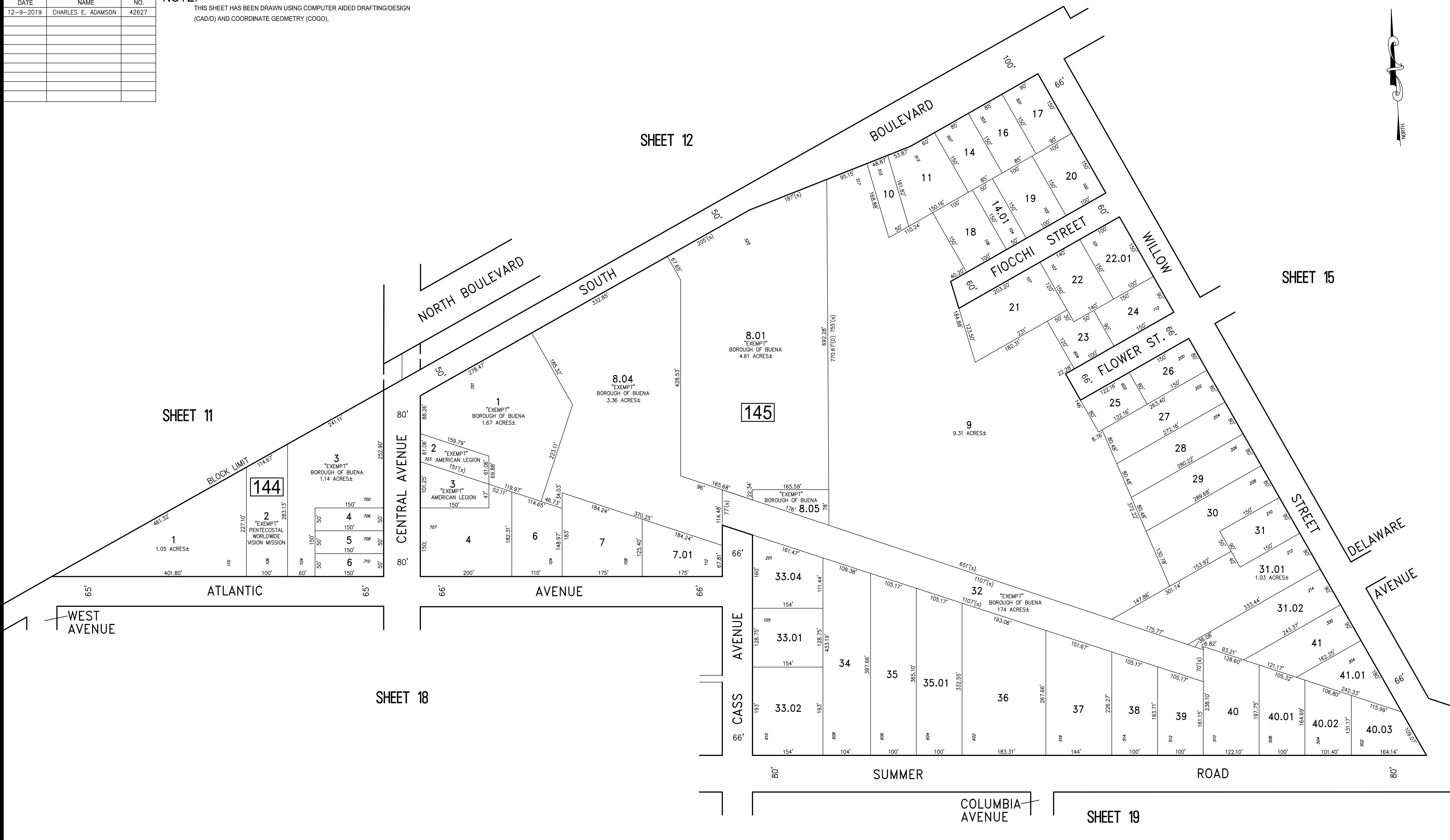
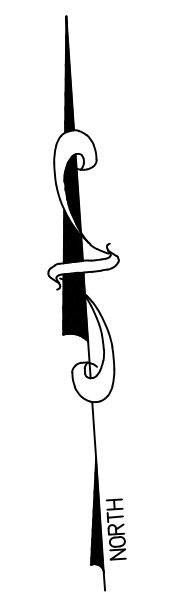


REVISIONS		
DATE	NAME	NO.
12-9-2019	CHARLES E. ADAMSON	42627

**NOTE:**  
THIS SHEET HAS BEEN DRAWN USING COMPUTER AIDED DRAFTING/DESIGN (CAD/D) AND COORDINATE GEOMETRY (COGO).



"THIS TAX MAP SHEET HAS BEEN DIGITALLY REVISED USING COMPUTER-AIDED DRAFTING/DESIGN (CADD) & COORDINATE GEOMETRY (COGO). IT IS BASED ON THE ORIGINAL DIGITALLY DRAWN TAX MAP PLATE BEARING THE OFFICIAL NEW JERSEY DIVISION TAXATION APPROVAL STAMP WITH APPROVAL DATE NOV 22, 2019 - SERIAL NUMBER 1107. THE DIGITALLY DRAWN TAX MAP PLATE WITH THE OFFICIAL APPROVAL STAMP IS ON FILE WITH REMINGTON & VERNICK ENGINEERS."

**TAX MAP**  
**BOROUGH OF BUENA**  
ATLANTIC COUNTY NEW JERSEY  
SCALE: 1" = 100' DATE: 3-12-2019  
CHARLES E. ADAMSON N.J.P.L.S. LIC. NO. 42627

**REMINGTON & VERNICK ENGINEERS**  
845 N. MAIN STREET, PLEASANTVILLE, N.J. 08232  
(609) 645-7110, FAX (609) 645-7076, WEB SITE ADDRESS: WWW.RVE.COM  
Certificate of Authorization: 24 GA 28003300  
-ENGINEERING EXCELLENCE-