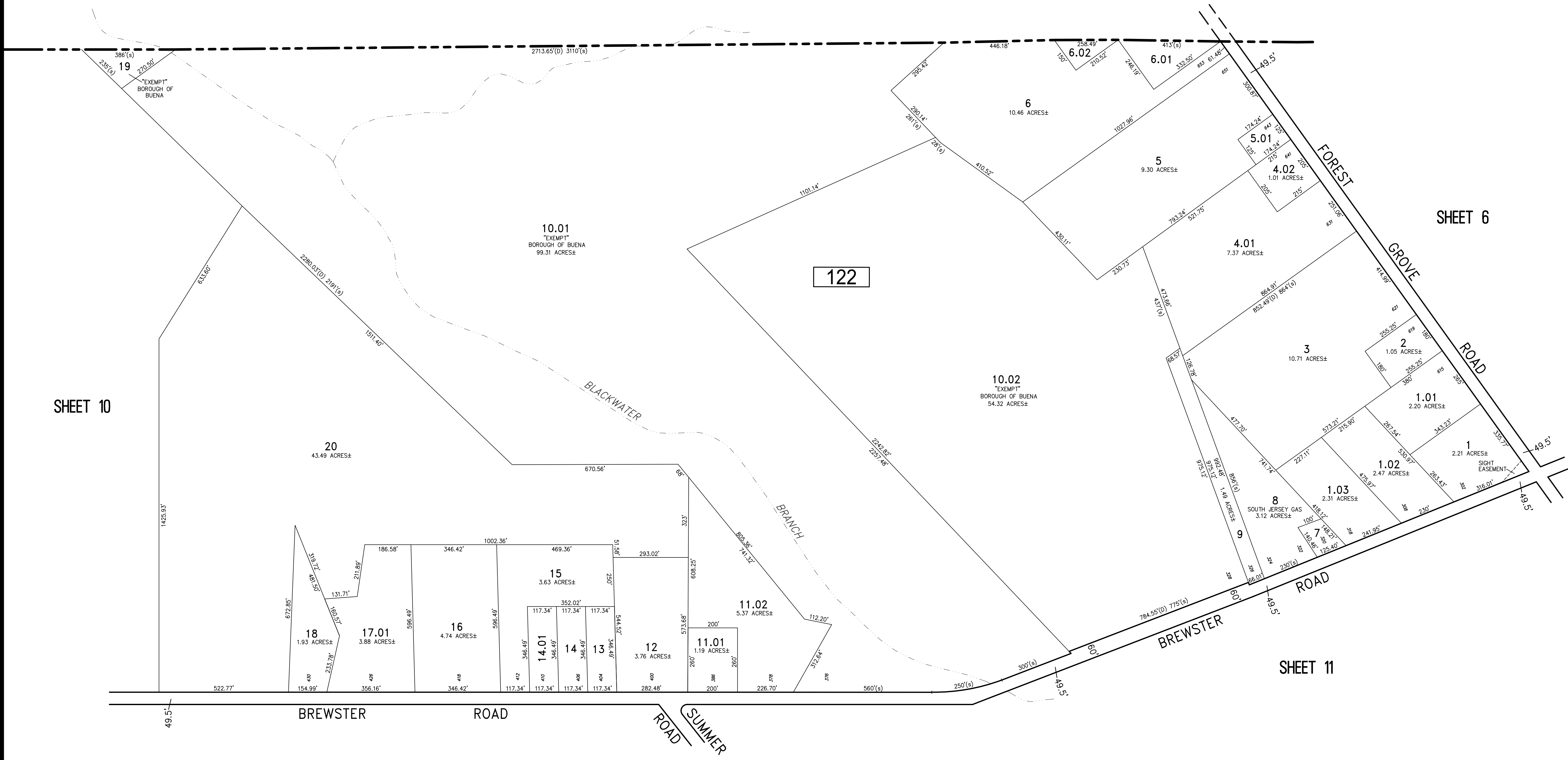
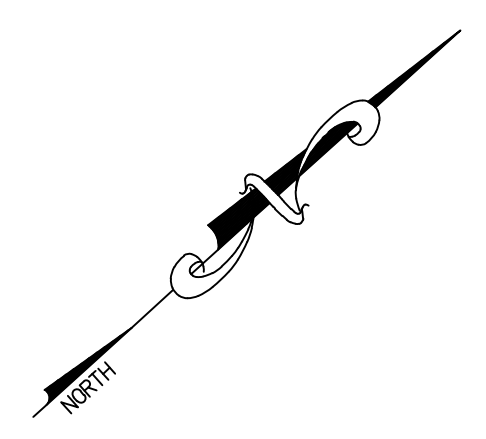


REVISIONS		
DATE	NAME	NO.
01-19-2022	CHARLES E. ADAMSON	42627

NOTE:
THIS SHEET HAS BEEN DRAWN USING COMPUTER AIDED DRAFTING/DESIGN (CAD/D) AND COORDINATE GEOMETRY (COGO).

TOWNSHIP OF FRANKLIN
COUNTY OF GLOUCESTER



SHEET 10

SHEET 6

SHEET 11

SHEET 17

"THIS TAX MAP SHEET HAS BEEN DIGITALLY REVISED USING COMPUTER-AIDED DRAFTING/DESIGN (CADD) & COORDINATE GEOMETRY (COGO). IT IS BASED ON THE ORIGINAL DIGITALLY DRAWN TAX MAP PLATE BEARING THE OFFICIAL NEW JERSEY DIVISION TAXATION APPROVAL STAMP WITH APPROVAL DATE NOV 22, 2019 - SERIAL NUMBER 1107. THE DIGITALLY DRAWN TAX MAP PLATE WITH THE OFFICIAL APPROVAL STAMP IS ON FILE WITH REMINGTON & VERNICK ENGINEERS."

TAX MAP
BOROUGH OF BUENA
ATLANTIC COUNTY NEW JERSEY
SCALE: 1" = 200' DATE: 3-12-2019
CHARLES E. ADAMSON N.J.P.L.S. LIC. NO. 42627
REMINGTON & VERNICK ENGINEERS
845 N. MAIN STREET, PLEASANTVILLE, NJ, 08232
(609) 645-7110, FAX (609) 645-7076, WEB SITE ADDRESS: WWW.RVE.COM
Certificate of Authorization: 24 GA 28003300
~ENGINEERING EXCELLENCE~