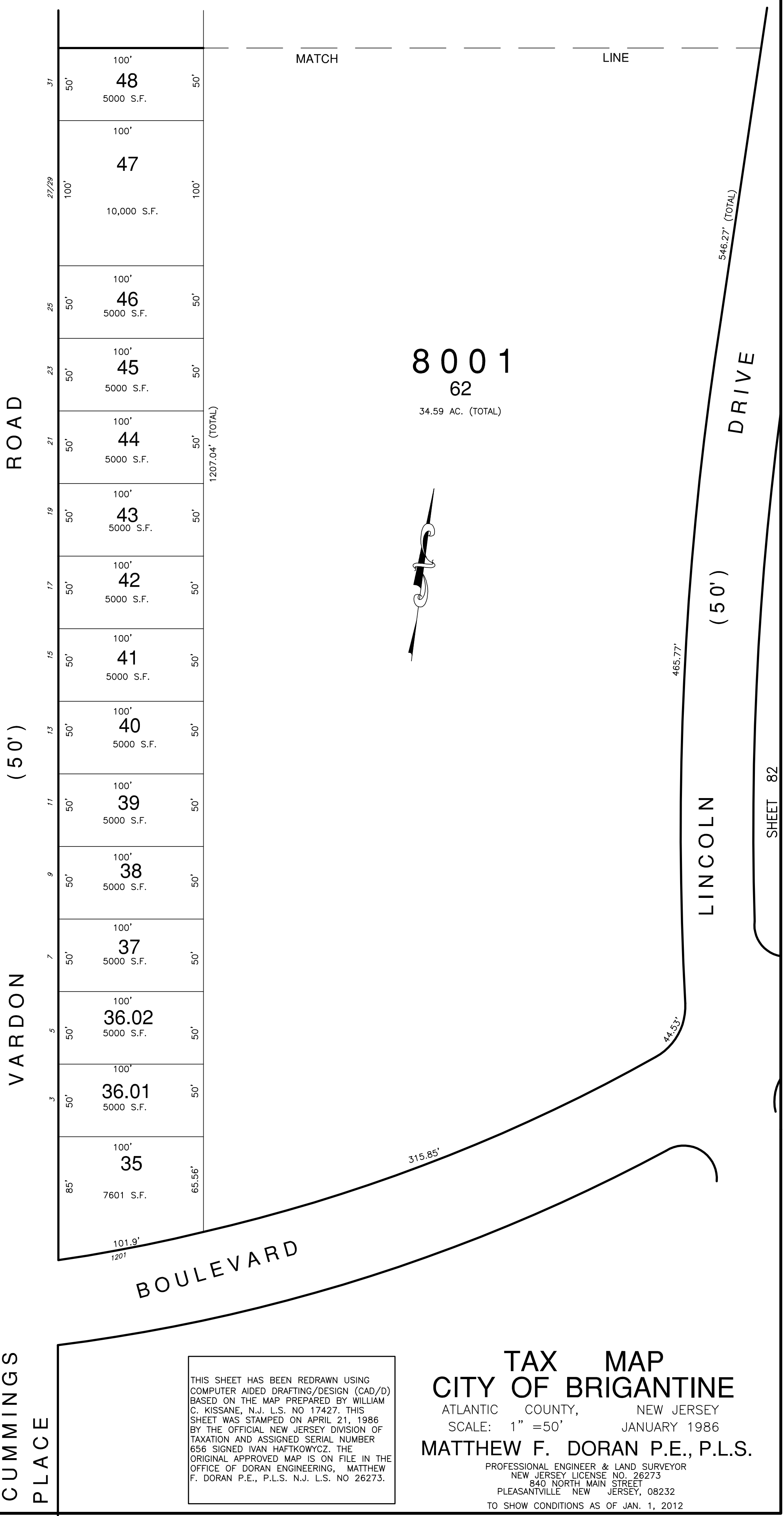
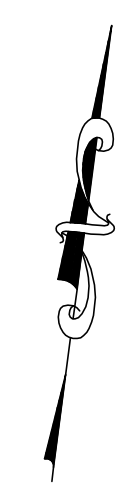


REVISIONS			
DATE	BY	LIC. No.	COMMENTS



8001
62
34.59 AC. (TOTAL)



THIS SHEET HAS BEEN REDRAWN USING COMPUTER AIDED DRAFTING/DESIGN (CAD/D) BASED ON THE MAP PREPARED BY WILLIAM C. KISSANE, N.J. L.S. NO 17427; THIS SHEET WAS STAMPED ON APRIL 21, 1986 BY THE OFFICIAL NEW JERSEY DIVISION OF TAXATION AND ASSIGNED SERIAL NUMBER 856 SIGNED IVAN HAFKOWICZ, THE ORIGINAL APPROVED MAP IS ON FILE IN THE OFFICE OF DORAN ENGINEERING, MATTHEW F. DORAN P.E., P.L.S. N.J. L.S. NO 26273.

TAX MAP
CITY OF BRIGANTINE
ATLANTIC COUNTY, NEW JERSEY
SCALE: 1" = 50' JANUARY 1986
MATTHEW F. DORAN P.E., P.L.S.
PROFESSIONAL ENGINEER & LAND SURVEYOR
NEW JERSEY LICENSE NO. 26273
840 NORTH MAIN STREET
PLEASANTVILLE NEW JERSEY, 08232
TO SHOW CONDITIONS AS OF JAN. 1, 2012

SHEET 78

SHEET 75

SHEET 82