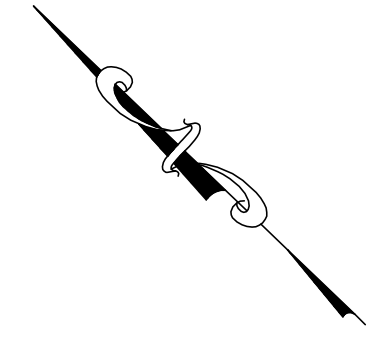
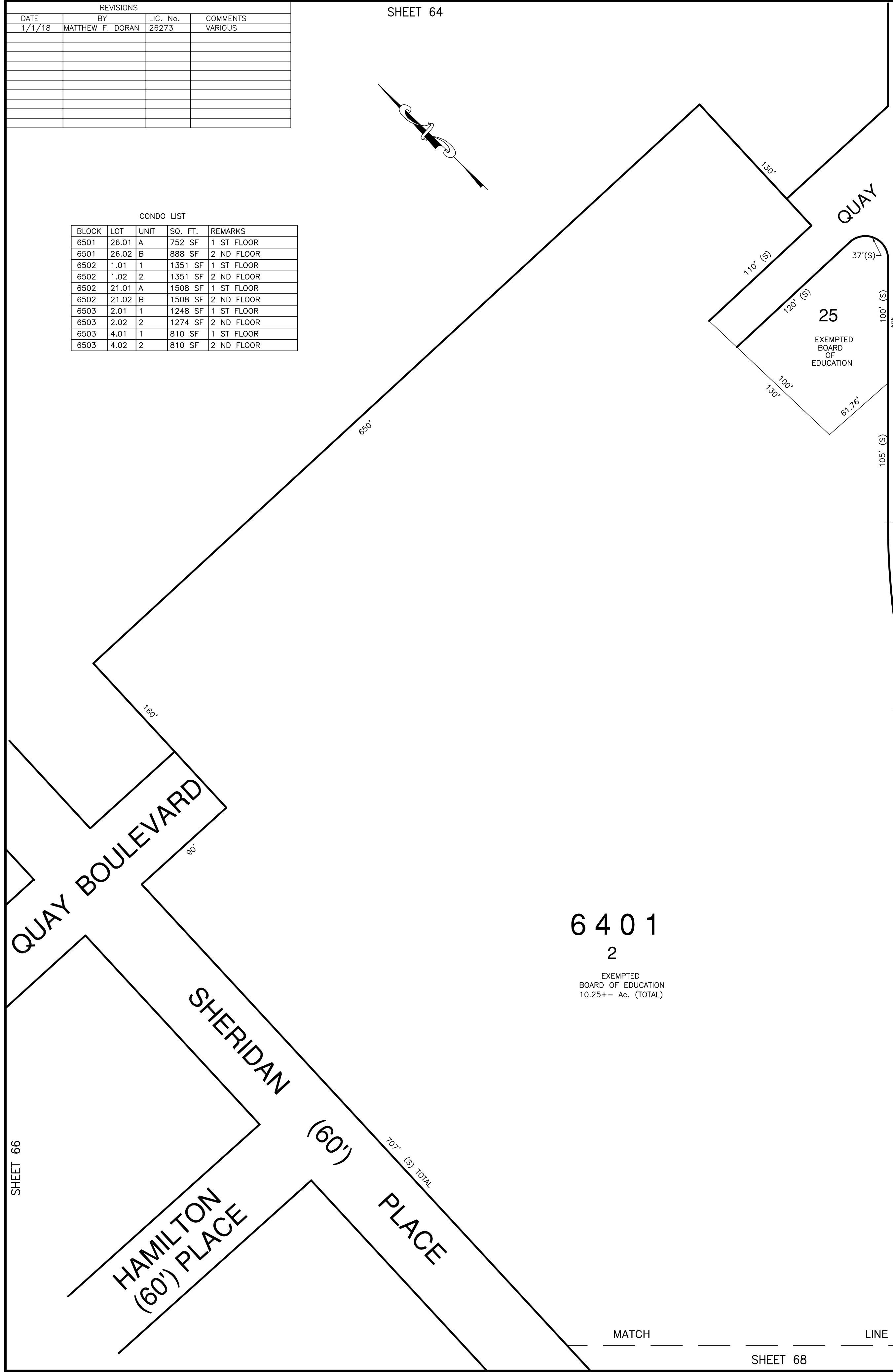


REVISIONS			
DATE	BY	LIC. No.	COMMENTS
1/7/18	MATTHEW F. DORAN	26273	VARIOUS

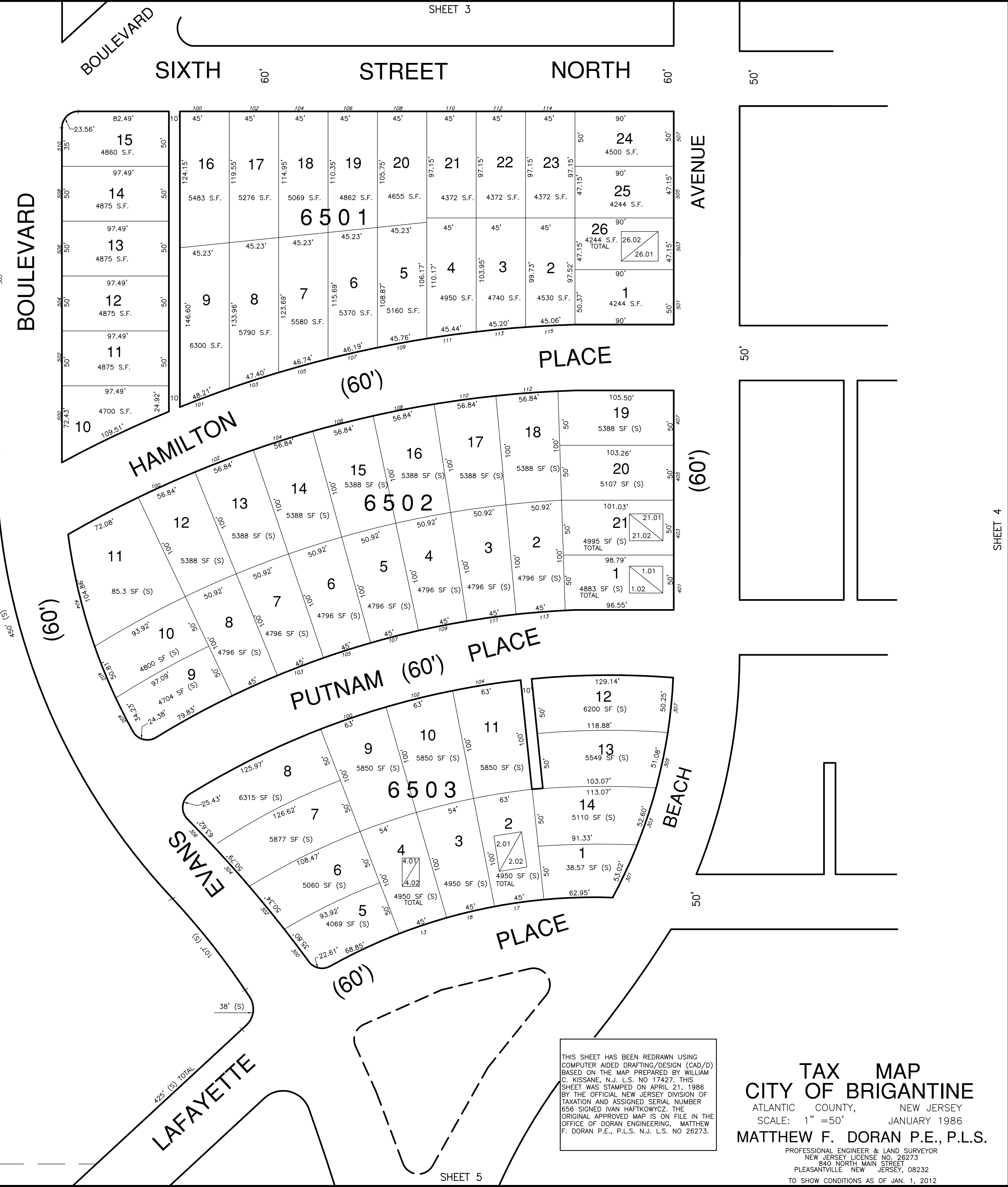
SHEET 64



CONDO LIST				
BLOCK	LOT	UNIT	SQ. FT.	REMARKS
6501	26.01	A	752 SF	1 ST FLOOR
6501	26.02	B	888 SF	2 ND FLOOR
6502	1.01	1	1351 SF	1 ST FLOOR
6502	1.02	2	1351 SF	2 ND FLOOR
6502	21.01	A	1508 SF	1 ST FLOOR
6502	21.02	B	1508 SF	2 ND FLOOR
6503	2.01	1	1248 SF	1 ST FLOOR
6503	2.02	2	1274 SF	2 ND FLOOR
6503	4.01	1	810 SF	1 ST FLOOR
6503	4.02	2	810 SF	2 ND FLOOR



6401
2
EXEMPTED
BOARD OF EDUCATION
10.25+- Ac. (TOTAL)



THIS SHEET HAS BEEN REDRAWN USING COMPUTER AIDED DRAFTING/DESIGN (CAD/D) BASED ON THE MAP PREPARED BY WILLIAM C. KISSANE, N.J. L.S. NO 17427. THIS SHEET WAS STAMPED ON APRIL 21, 1986 BY THE OFFICIAL NEW JERSEY DIVISION OF TAXATION AND ASSIGNED SERIAL NUMBER 656 SIGNED IVAN HAFKOWYCZ. THE ORIGINAL APPROVED MAP IS ON FILE IN THE OFFICE OF DORAN ENGINEERING, MATTHEW F. DORAN P.E., P.L.S. N.J. L.S. NO 26273.

TAX MAP
CITY OF BRIGANTINE
ATLANTIC COUNTY, NEW JERSEY
SCALE: 1" = 50'
JANUARY 1986
MATTHEW F. DORAN P.E., P.L.S.
PROFESSIONAL ENGINEER & LAND SURVEYOR
NEW JERSEY LICENSE NO. 26273
840 NORTH MAIN STREET
PLEASANTVILLE NEW JERSEY, 08232
TO SHOW CONDITIONS AS OF JAN. 1, 2012

SHEET 66

MATCH LINE

SHEET 68

SHEET 5

SHEET 4