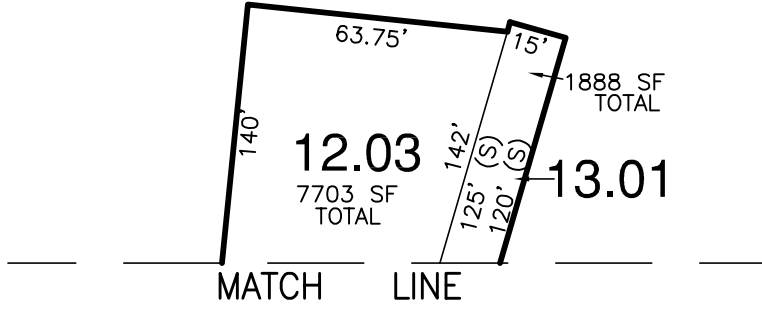
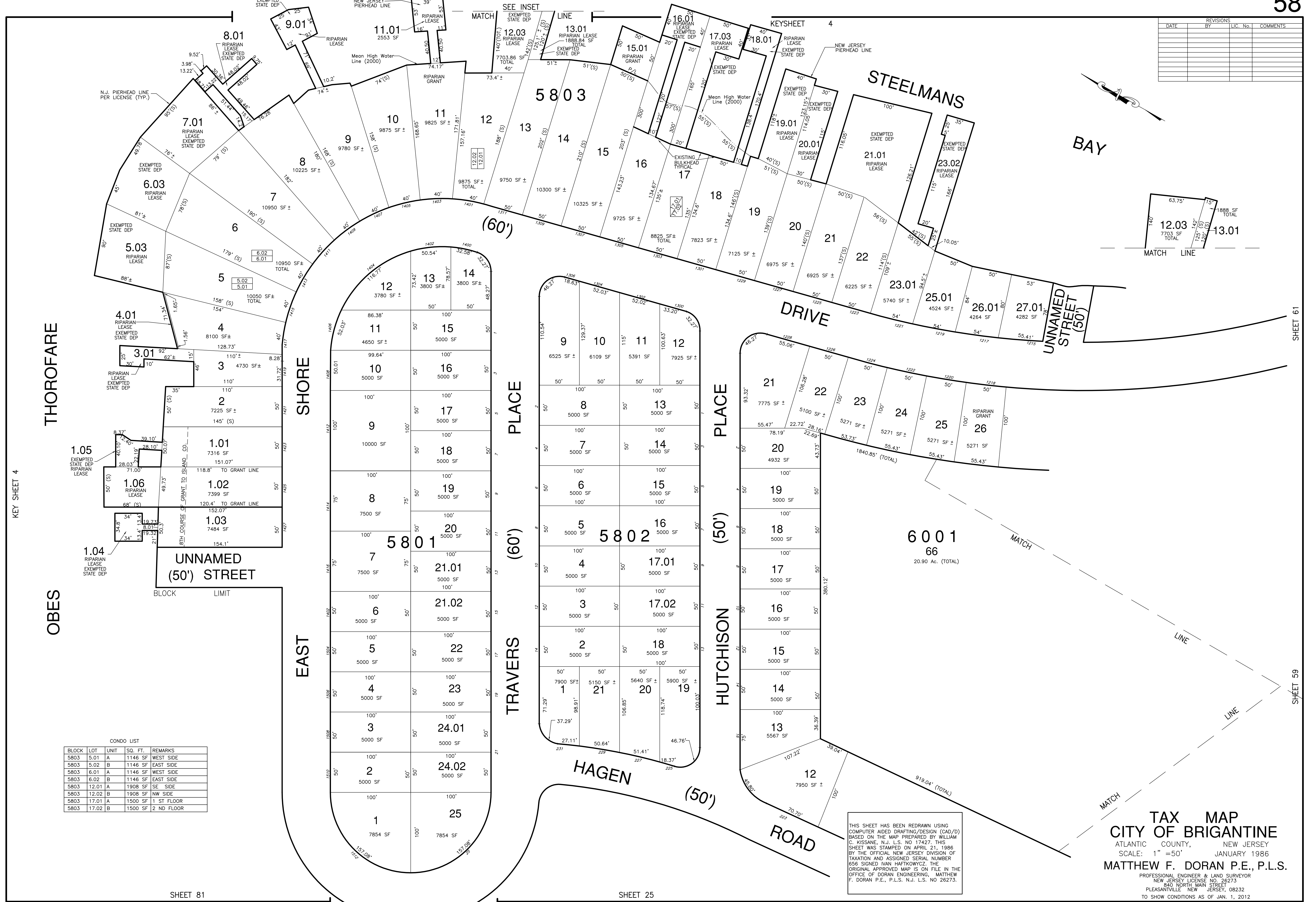


REVISIONS				
DATE	BY	LIC. No.	COMMENTS	



CONDO LIST

BLOCK	LOT	UNIT	SQ. FT.	REMARKS
5803	5.01	A	1146 SF	WEST SIDE
5803	5.02	B	1146 SF	EAST SIDE
5803	6.01	A	1146 SF	WEST SIDE
5803	6.02	B	1146 SF	EAST SIDE
5803	12.01	A	1908 SF	SE SIDE
5803	12.02	B	1908 SF	NW SIDE
5803	17.01	A	1500 SF	1 ST FLOOR
5803	17.02	B	1500 SF	2 ND FLOOR

THIS SHEET HAS BEEN REDRAWN USING COMPUTER AIDED DRAFTING/DESIGN (CAD/D) BASED ON THE MAP PREPARED BY WILLIAM C. KISSANE, N.J. L.S. NO 17427. THIS SHEET WAS STAMPED ON APRIL 21, 1986 BY THE OFFICIAL NEW JERSEY DIVISION OF TAXATION AND ASSIGNED SERIAL NUMBER 656 SIGNED IVAN HARTKOWICZ. THE ORIGINAL APPROVED MAP IS ON FILE IN THE OFFICE OF DORAN ENGINEERING, MATTHEW F. DORAN P.E., P.L.S. N.J. L.S. NO 26273.

TAX MAP
CITY OF BRIGANTINE
 ATLANTIC COUNTY, NEW JERSEY
 SCALE: 1" = 50' JANUARY 1986
MATTHEW F. DORAN P.E., P.L.S.
 PROFESSIONAL ENGINEER & LAND SURVEYOR
 NEW JERSEY LICENSE NO 26273
 840 NORTH MAIN STREET
 PLEASANTVILLE NEW JERSEY, 08232
 TO SHOW CONDITIONS AS OF JAN. 1, 2012

KEY SHEET 4

THOROFARE OBES

EAST SHORE PLACE

TRAVERS PLACE

HUTCHISON PLACE

HAGEN ROAD

STEELMANS DRIVE

UNNAMED STREET (50')

SHEET 81

SHEET 25

GOLF COURSE (25') DRIVE

SHEET 61

SHEET 59