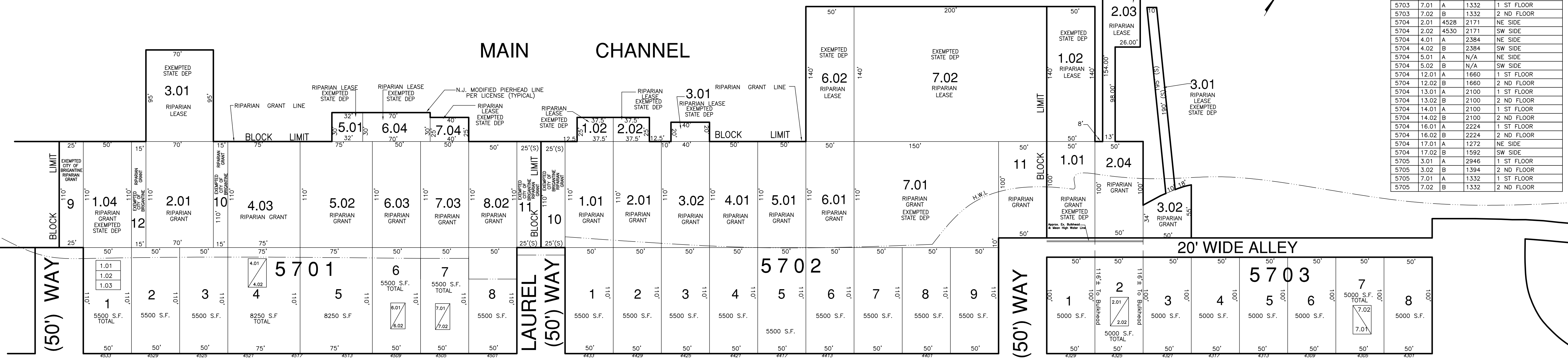


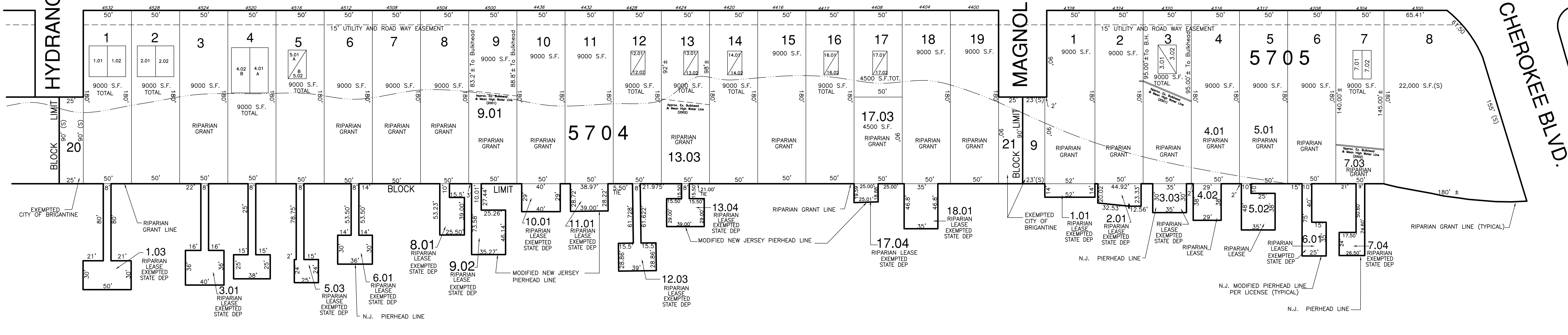
REVISIONS			
DATE	BY	LIC. No.	COMMENTS
1/1/18	MATTHEW F. DORAN	26273	BL. 5701 LOT 7

KEY SHEET 1

CONDO LIST				
BLOCK	LOT	UNIT	SQ. FT.	REMARKS
5701	1.01	A	1109	NW SIDE
5701	1.02	B	1109	MIDDLE
5701	1.03	C	1844	SE SIDE
5701	4.01	A	2320	1 ST FLOOR
5701	4.02	B	2320	2 ND FLOOR
5701	6.01	A	1700	1 ST FLOOR
5701	6.02	B	1700	2 ND FLOOR
5701	7.01	A	1280	1 ST FLOOR
5701	7.02	B	1280	1 ST FLOOR
5703	2.01	A	1070	1 ST FLOOR
5703	2.02	B	1070	2 ND FLOOR
5703	7.01	A	1332	1 ST FLOOR
5703	7.02	B	1332	2 ND FLOOR
5704	2.01	A	4528	2171 NE SIDE
5704	2.02	A	4530	2171 SW SIDE
5704	4.01	A	2384	NE SIDE
5704	4.02	B	2384	SW SIDE
5704	5.01	A	N/A	NE SIDE
5704	5.02	B	N/A	SW SIDE
5704	12.01	A	1660	1 ST FLOOR
5704	12.02	B	1660	2 ND FLOOR
5704	13.01	A	2100	1 ST FLOOR
5704	13.02	B	2100	2 ND FLOOR
5704	14.01	A	2100	1 ST FLOOR
5704	14.02	B	2100	2 ND FLOOR
5704	16.01	A	2224	1 ST FLOOR
5704	16.02	B	2224	2 ND FLOOR
5704	17.01	A	1272	NE SIDE
5704	17.02	B	1592	SW SIDE
5705	3.01	A	2946	1 ST FLOOR
5705	3.02	B	1394	2 ND FLOOR
5705	7.01	A	1332	1 ST FLOOR
5705	7.02	B	1332	2 ND FLOOR



ATLANTIC - BRIGANTINE (100') BOULEVARD



ST GEORGE'S THOROFARE

THIS SHEET HAS BEEN REDRAWN USING COMPUTER AIDED DRAFTING/DESIGN (CAD/D) BASED ON THE MAP PREPARED BY WILLIAM C. KISSANE, N.J. L.S. NO. 17427. THIS SHEET WAS STAMPED ON APRIL 21, 1986 BY THE OFFICIAL NEW JERSEY DIVISION OF TAXATION AND ASSIGNED SERIAL NUMBER 656 SIGNED IVAN HAFTKOWYCZ, THE ORIGINAL APPROVED MAP IS ON FILE IN THE OFFICE OF DORAN ENGINEERING, MATTHEW F. DORAN P.E., P.L.S. N.J. L.S. NO. 26273.

TAX MAP
CITY OF BRIGANTINE
 ATLANTIC COUNTY, NEW JERSEY
 SCALE: 1" = 50' JANUARY 1986
MATTHEW F. DORAN P.E., P.L.S.
 PROFESSIONAL ENGINEER & LAND SURVEYOR
 NEW JERSEY LICENSE NO. 26273
 840 NORTH MAIN STREET
 PLEASANTVILLE, NEW JERSEY, 08232
 TO SHOW CONDITIONS AS OF JAN. 1, 2012

KEY SHEET 1