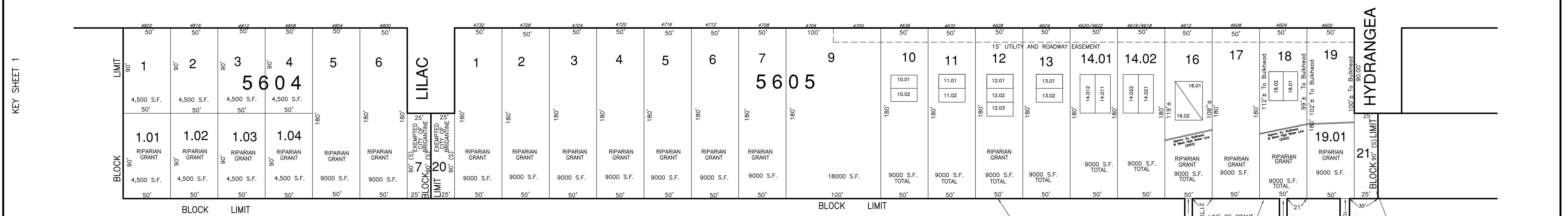
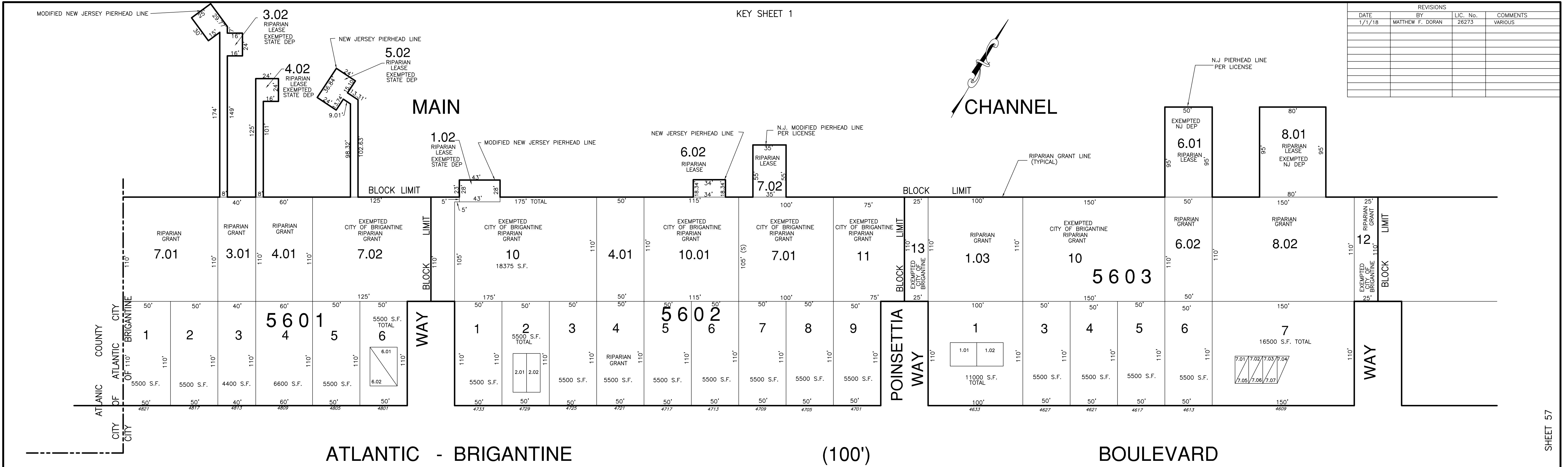


KEY SHEET 1

REVISIONS			
DATE	BY	LIC. No.	COMMENTS
1/1/18	MATTHEW F. DORAN	26273	VARIOUS



CONDO LIST

BLOCK	LOT	UNIT	SQ. FT.	REMARKS
5601	6.01	A	1200	1ST FLOOR
5601	6.02	B	1200	2ND FLOOR
5602	2.01	A	1494	NE SIDE
5602	2.02	B	1494	SW SIDE
5603	1.01	A	2532	1 ST FLOOR
5603	1.02	B	1908	2 ND FLOOR
5603	7.01	601 A	1221	1 ST FLOOR
5603	7.02	601 B	1769	2 ND FLOOR
5603	7.03	601 C	2442	1 ST FLOOR
5603	7.04	605 A	2638	2 ND FLOOR
5603	7.05	605 B	2638	1 ST FLOOR
5603	7.06	609 A	2638	2 ND FLOOR
5603	7.07	609 B	2638	1 ST FLOOR
5605	10.01	A	1215	SW SIDE
5605	10.02	B	1215	NE SIDE
5605	11.01	A	1805	1 ST FLOOR
5605	11.02	B	1805	2 ND FLOOR
5605	12.01	A	1016	1 ST FLOOR
5605	12.02	B	1656	2 ND FLOOR
5605	12.03	C	1656	3 RD FLOOR
5605	13.01	A	2676	1 ST FLOOR
5605	13.02	B	1882	2 ND FLOOR
5605	14.01	4616	2254	1 ST FLOOR
5605	14.02	4618	2254	2 ND FLOOR
5605	14.03	4620	2254	1 ST FLOOR
5605	14.04	4622	2254	2 ND FLOOR
5605	16.01	A	1482	1 ST FLOOR
5605	16.02	B	1482	2 ND FLOOR
5605	18.01	A	1686	SIDE BY SIDE
5605	18.02	B	1686	SIDE BY SIDE

THIS SHEET HAS BEEN REDRAWN USING COMPUTER AIDED DRAFTING/DESIGN (CAD/D) BASED ON THE MAP PREPARED BY WILLIAM C. KISSANE, N.J. L.S. NO 17427. THIS SHEET WAS STAMPED ON APRIL 21, 1986 BY THE OFFICIAL NEW JERSEY DIVISION OF TAXATION AND ASSIGNED SERIAL NUMBER B56 SIGNED VAN HAFKOWICZ. THE ORIGINAL APPROVED MAP IS ON FILE IN THE OFFICE OF DORAN ENGINEERING, MATTHEW F. DORAN P.E., P.L.S. N.J. L.S. NO 26273.

TAX MAP
CITY OF BRIGANTINE
 ATLANTIC COUNTY, NEW JERSEY
 SCALE: 1" = 50'
 JANUARY 1986
MATTHEW F. DORAN P.E., P.L.S.
 PROFESSIONAL ENGINEER & LAND SURVEYOR
 NEW JERSEY LICENSE NO. 26273
 840 NORTH MAIN STREET
 PLEASANTVILLE NEW JERSEY, 08232
 TO SHOW CONDITIONS AS OF JAN. 1, 2012

KEY SHEET 1

SHEET 57