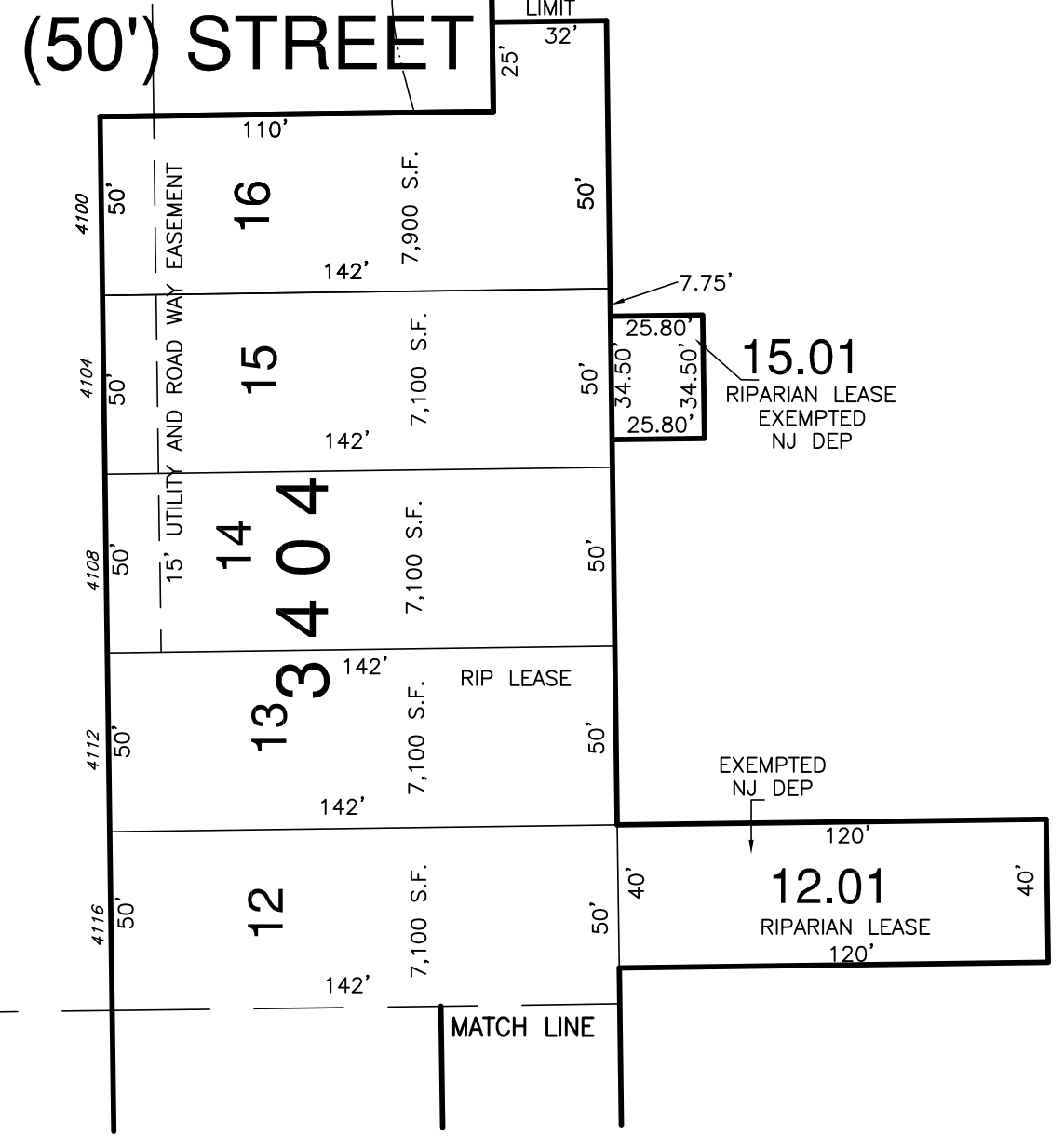
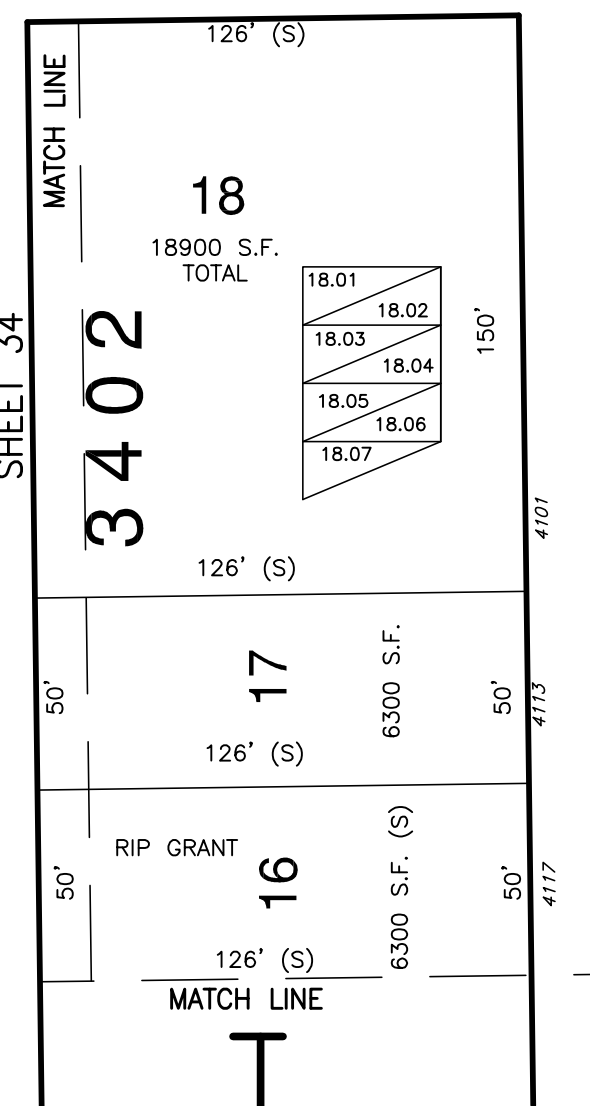
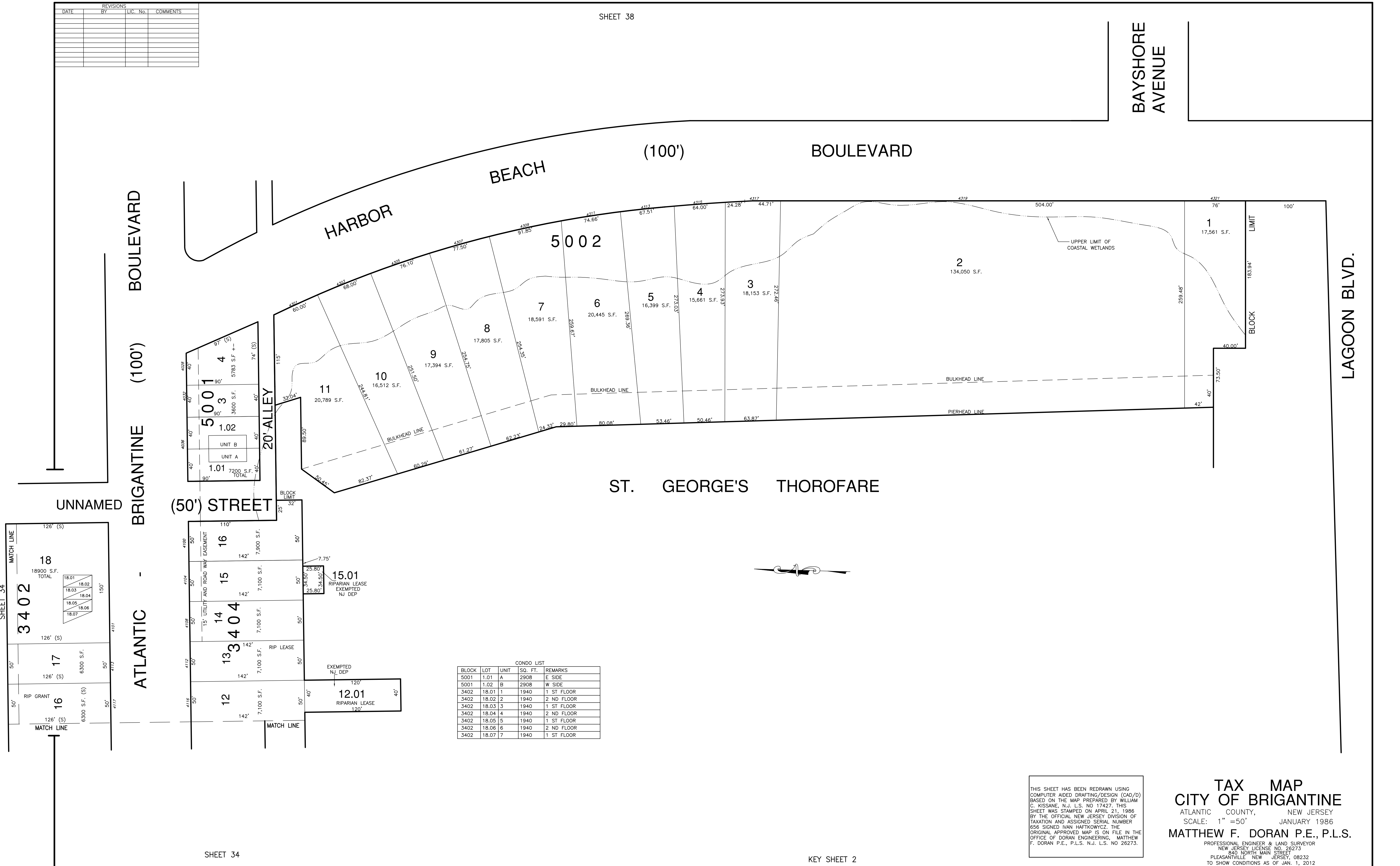


REVISIONS			
DATE	BY	LIC. No.	COMMENTS



CONDO LIST

BLOCK	LOT	UNIT	SQ. FT.	REMARKS
5001	1.01	A	2908	E SIDE
5001	1.02	B	2908	W SIDE
3402	18.01	1	1940	1 ST FLOOR
3402	18.02	2	1940	2 ND FLOOR
3402	18.03	3	1940	1 ST FLOOR
3402	18.04	4	1940	2 ND FLOOR
3402	18.05	5	1940	1 ST FLOOR
3402	18.06	6	1940	2 ND FLOOR
3402	18.07	7	1940	1 ST FLOOR

THIS SHEET HAS BEEN REDRAWN USING COMPUTER AIDED DRAFTING/DESIGN (CAD/D) BASED ON THE MAP PREPARED BY WILLIAM C. KISSANE, N.J. L.S. NO 17427. THIS SHEET WAS STAMPED ON APRIL 21, 1986 BY THE OFFICIAL NEW JERSEY DIVISION OF TAXATION AND ASSIGNED SERIAL NUMBER 656 SIGNED IVAN HAFTKOWYCZ. THE ORIGINAL APPROVED MAP IS ON FILE IN THE OFFICE OF DORAN ENGINEERING, MATTHEW F. DORAN P.E., P.L.S. N.J. L.S. NO 26273.

TAX MAP
CITY OF BRIGANTINE
 ATLANTIC COUNTY, NEW JERSEY
 SCALE: 1" = 50'
 JANUARY 1986
MATTHEW F. DORAN P.E., P.L.S.
 PROFESSIONAL ENGINEER & LAND SURVEYOR
 NEW JERSEY LICENSE NO. 26273
 840 NORTH MAIN STREET
 PLEASANTVILLE, NEW JERSEY, 08232
 TO SHOW CONDITIONS AS OF JAN. 1, 2012