

REVISIONS			
DATE	BY	LIC. No.	COMMENTS

SHEET 47

MANITOBA AVENUE

HARBOUR BEACH (100') BOULEVARD

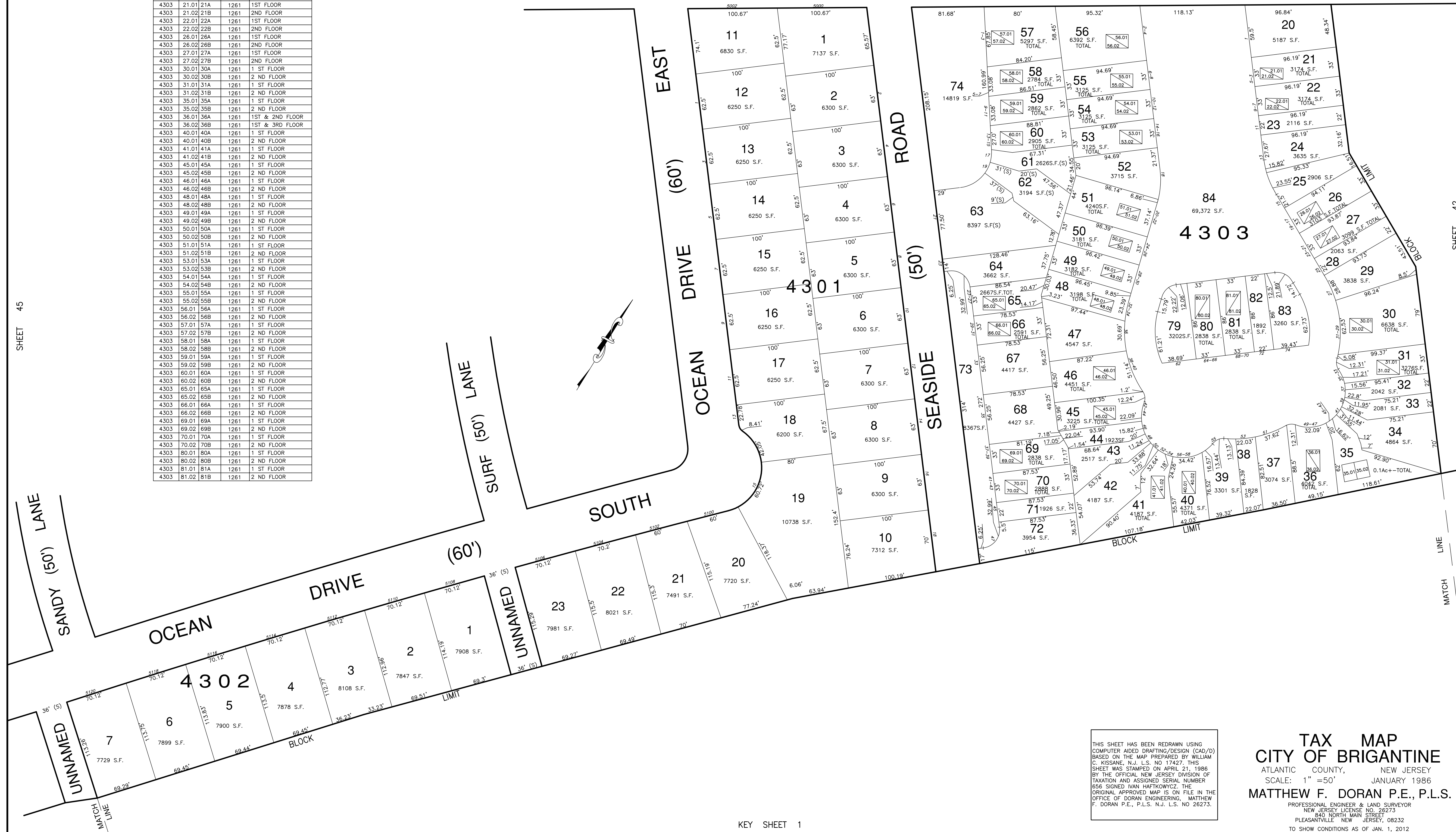
CONDO LIST			
BLOCK	LOT	UNIT	REMARKS
4303	21.01	21A	1ST FLOOR
4303	21.02	21B	2ND FLOOR
4303	22.01	22A	1ST FLOOR
4303	22.02	22B	2ND FLOOR
4303	26.01	26A	1ST FLOOR
4303	26.02	26B	2ND FLOOR
4303	27.01	27A	1ST FLOOR
4303	27.02	27B	2ND FLOOR
4303	30.01	30A	1 ST FLOOR
4303	30.02	30B	2 ND FLOOR
4303	31.01	31A	1 ST FLOOR
4303	31.02	31B	2 ND FLOOR
4303	35.01	35A	1 ST FLOOR
4303	35.02	35B	2 ND FLOOR
4303	36.01	36A	1ST & 2ND FLOOR
4303	36.02	36B	1ST & 3RD FLOOR
4303	40.01	40A	1 ST FLOOR
4303	40.01	40B	1261 1 ST FLOOR
4303	41.01	41A	1 ST FLOOR
4303	41.02	41B	2 ND FLOOR
4303	45.01	45A	1 ST FLOOR
4303	45.02	45B	2 ND FLOOR
4303	46.01	46A	1 ST FLOOR
4303	46.02	46B	2 ND FLOOR
4303	48.01	48A	1 ST FLOOR
4303	48.02	48B	2 ND FLOOR
4303	49.01	49A	1 ST FLOOR
4303	49.02	49B	2 ND FLOOR
4303	50.01	50A	1 ST FLOOR
4303	50.02	50B	2 ND FLOOR
4303	51.01	51A	1 ST FLOOR
4303	51.02	51B	2 ND FLOOR
4303	53.01	53A	1 ST FLOOR
4303	53.02	53B	2 ND FLOOR
4303	54.01	54A	1 ST FLOOR
4303	54.02	54B	2 ND FLOOR
4303	55.01	55A	1 ST FLOOR
4303	55.02	55B	2 ND FLOOR
4303	56.01	56A	1 ST FLOOR
4303	56.02	56B	2 ND FLOOR
4303	57.01	57A	1 ST FLOOR
4303	57.02	57B	2 ND FLOOR
4303	58.01	58A	1 ST FLOOR
4303	58.02	58B	2 ND FLOOR
4303	59.01	59A	1 ST FLOOR
4303	59.02	59B	2 ND FLOOR
4303	60.01	60A	1 ST FLOOR
4303	60.02	60B	2 ND FLOOR
4303	65.01	65A	1 ST FLOOR
4303	65.02	65B	2 ND FLOOR
4303	66.01	66A	1 ST FLOOR
4303	66.02	66B	2 ND FLOOR
4303	69.01	69A	1 ST FLOOR
4303	69.02	69B	2 ND FLOOR
4303	70.01	70A	1 ST FLOOR
4303	70.02	70B	2 ND FLOOR
4303	80.01	80A	1 ST FLOOR
4303	80.02	80B	2 ND FLOOR
4303	81.01	81A	1 ST FLOOR
4303	81.02	81B	2 ND FLOOR

SHEET 45

SANDY LANE (50') LANE

SHEET 42

MATCH LINE



THIS SHEET HAS BEEN REDRAWN USING COMPUTER AIDED DRAFTING/DESIGN (CAD/D) BASED ON THE MAP PREPARED BY WILLIAM C. KISSANE, N.J. L.S. NO. 17427. THIS SHEET WAS STAMPED ON APRIL 21, 1986 BY THE OFFICIAL NEW JERSEY DIVISION OF TAXATION AND ASSIGNED SERIAL NUMBER R56 SIGNED IVAN HAFKOWYCZ, THE ORIGINAL APPROVED MAP IS ON FILE IN THE OFFICE OF DORAN ENGINEERING, MATTHEW F. DORAN P.E., P.L.S. N.J. L.S. NO. 26273.

TAX MAP
CITY OF BRIGANTINE
 ATLANTIC COUNTY, NEW JERSEY
 SCALE: 1" = 50' JANUARY 1986
MATTHEW F. DORAN P.E., P.L.S.
 PROFESSIONAL ENGINEER & LAND SURVEYOR
 NEW JERSEY LICENSE NO. 26273
 840 NORTH MAIN STREET
 PLEASANTVILLE, NEW JERSEY, 08232
 TO SHOW CONDITIONS AS OF JAN. 1, 2012

KEY SHEET 1