

REVISIONS			
DATE	BY	LIC. No.	COMMENTS
1/1/18	MATTHEW F. DORAN	26273	BL. 3901 LOT 9

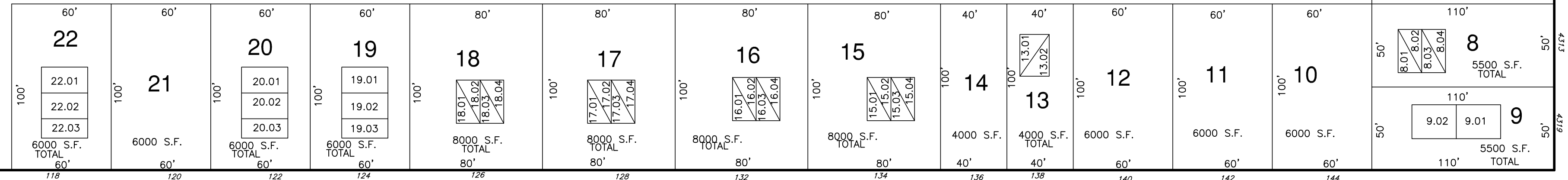
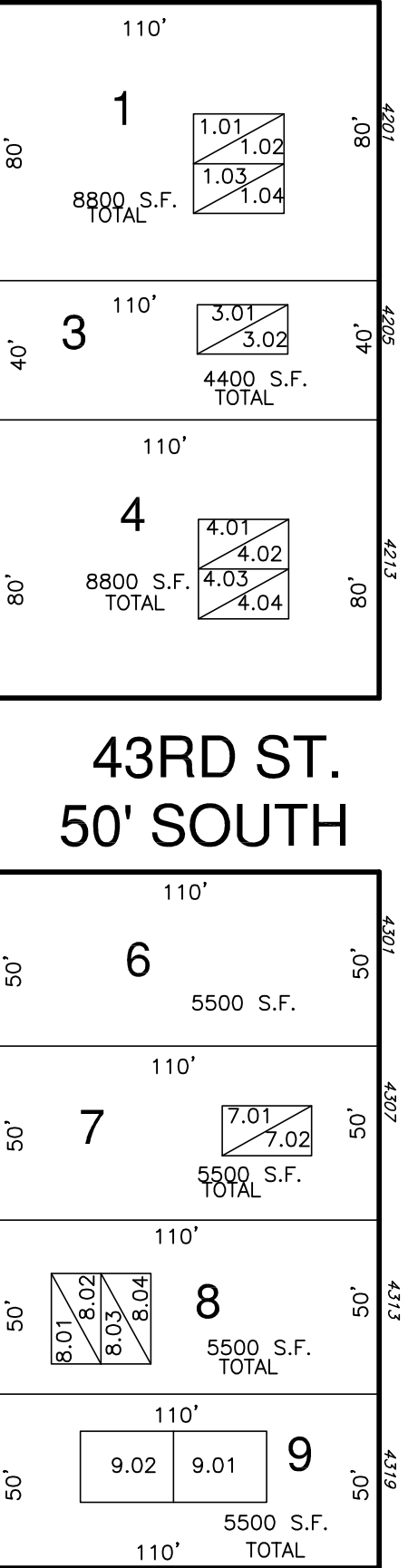
SHEET 36

FORTY SECOND (50') STREET SOUTH

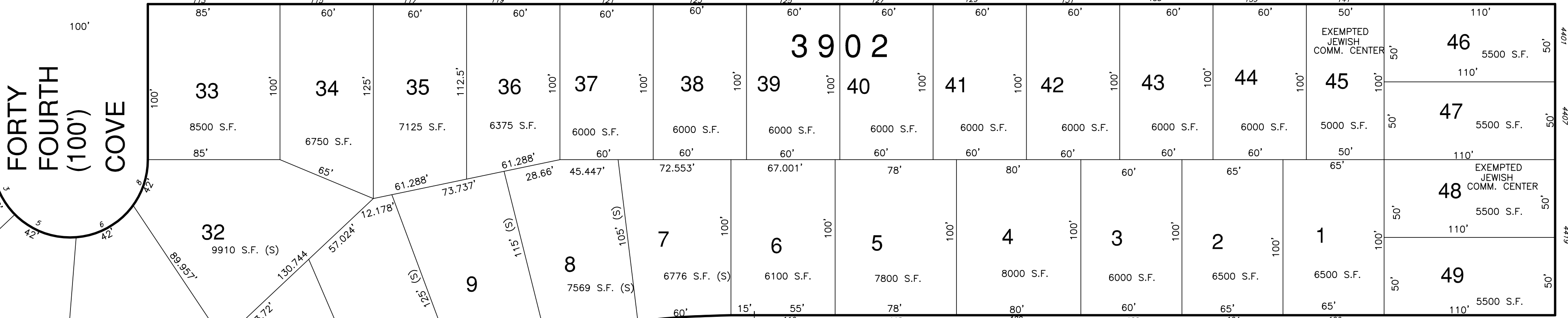
BLOCK LIMIT				
CONDO LIST				
BLOCK	LOT	UNIT	SQ. FT.	REMARKS
3901	1.01	101	1092	1 ST FLOOR
3901	1.02	102	1092	2 ND FLOOR
3901	1.03	103	1092	1 ST FLOOR
3901	1.04	104	1092	2 ND FLOOR
3901	3.01	201	1008	1 ST FLOOR
3901	3.02	202	1008	2 ND FLOOR
3901	4.01	301	1092	1 ST FLOOR
3901	4.02	302	1092	2 ND FLOOR
3901	4.03	303	1092	1 ST FLOOR
3901	4.04	304	1092	2 ND FLOOR
3901	7.01	A	1092	1 ST FLOOR
3901	7.02	B	1092	2 ND FLOOR
3901	8.01	1	1102	1 ST FLOOR
3901	8.02	2	1102	2 ND FLOOR
3901	8.03	3	1330	1 ST FLOOR
3901	8.04	4	1330	2 ND FLOOR
3901	9.01	A	824	EAST SIDE
3901	9.02	B	798	WEST SIDE
3901	13.01	C	960	1 ST FLOOR
3901	13.02	D	960	2 ND FLOOR
3901	15.01	134A	1092	1 ST FLOOR
3901	15.02	134B	1092	2 ND FLOOR
3901	15.03	134C	1092	1 ST FLOOR
3901	15.04	134D	1092	2 ND FLOOR
3901	16.01	132A	1092	1 ST FLOOR
3901	16.02	132B	1092	2 ND FLOOR
3901	16.03	132C	1092	1 ST FLOOR
3901	16.04	132D	1092	2 ND FLOOR
3901	17.01	128A	1092	1 ST FLOOR
3901	17.02	128B	1092	2 ND FLOOR
3901	17.03	128C	1092	1 ST FLOOR
3901	17.04	128D	1092	2 ND FLOOR
3901	18.01	126A	1092	1 ST FLOOR
3901	18.02	126B	1092	2 ND FLOOR
3901	18.03	126C	1092	1 ST FLOOR
3901	18.04	126D	1092	2 ND FLOOR
3901	19.01	124A	1088	N E SIDE
3901	19.02	124B	1088	MIDDLE UNIT
3901	19.03	124C	1088	S W SIDE
3901	20.01	122A	1088	N E SIDE
3901	20.02	122B	1088	MIDDLE UNIT
3901	20.03	122C	1088	S W SIDE
3901	22.01	A	1216	N E SIDE
3901	22.02	B	1216	MIDDLE UNIT
3901	22.03	C	1350	S W SIDE

3901

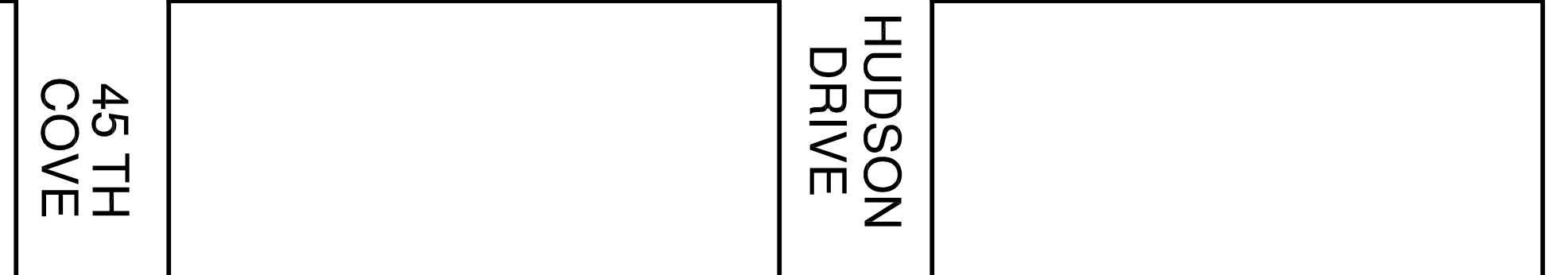
EXEMPTED CITY OF BRIGANTINE 23 9.965 +- AC. (S)



FORTY FOURTH (50') STREET SOUTH



(50') STREET SOUTH



SHEET 38

SHEET 52

SHEET 35

SHEET 51

SHEET 40

THIS SHEET HAS BEEN REDRAWN USING COMPUTER AIDED DRAFTING/DESIGN (CAD/D) BASED ON THE MAP PREPARED BY WILLIAM C. KISSANE, N.J. L.S. NO 17427. THIS SHEET WAS STAMPED ON APRIL 21, 1986 BY THE OFFICIAL NEW JERSEY DIVISION OF TAXATION AND ASSIGNED SERIAL NUMBER 656 SIGNED IVAN HAFKROWICZ. THE ORIGINAL APPROVED MAP IS ON FILE IN THE OFFICE OF DORAN ENGINEERING, MATTHEW F. DORAN P.E., P.L.S. N.J. L.S. NO 26273.

**TAX MAP**  
**CITY OF BRIGANTINE**  
 ATLANTIC COUNTY, NEW JERSEY  
 SCALE: 1" = 50' JANUARY 1986  
**MATTHEW F. DORAN P.E., P.L.S.**  
 PROFESSIONAL ENGINEER & LAND SURVEYOR  
 NEW JERSEY LICENSE NO. 26273  
 840 NORTH MAIN STREET  
 PLEASANTVILLE, NEW JERSEY, 08232  
 TO SHOW CONDITIONS AS OF JAN. 1, 2012