

TIDEWAY

BONITA

KEY SHEET 2

125' (S)	50'	1	6250 S.F.	4629
125' (S)	50'	2	6250 S.F.	4627
125' (S)	50'	3	6250 S.F.	4625
125' (S)	50'	4	6250 S.F. TOTAL 4.01	4621
75'	75'	5	9375 S.F. TOTAL 5.01 5.02	4613
125' (S)	50'	6	9375 S.F. TOTAL 6.01 6.02	4611
125' (S)	50'	7	6250 S.F.	4605
125' (S)	50'	8	6250 S.F.	4601
125' (S)	50'	9	6250 S.F.	3943
125' (S)	50'	10	6250 S.F.	3939
125' (S)	50'	11	6250 S.F.	3935
125' (S)	50'	12	6250 S.F.	3931
125' (S)	50'	13	6250 S.F.	3925
75'	75'	14	9375 S.F. TOTAL 14.01 14.02	3921
125' (S)	50'	15	9375 S.F.	3915
125' (S)	50'	16	6250 S.F.	3911
125' (S)	50'	17	6250 S.F.	3907
125' (S)	50'	18	6250 S.F. TOTAL 18.01 18.02	3901
125' (S)	50'	1	6250 S.F.	3897
125' (S)	50'	2	5000 S.F.	3895
40'	40'	3705		

ATLANTIC - BRIGANTINE (100') BOULEVARD

30' (S)	40'	1	2529 S.F. (S)	4600
75' (S)	40'	2	3600 S.F.	4600
90'	40'	3	3600 S.F.	4600
90'	40'	4	4500 S.F.	4600

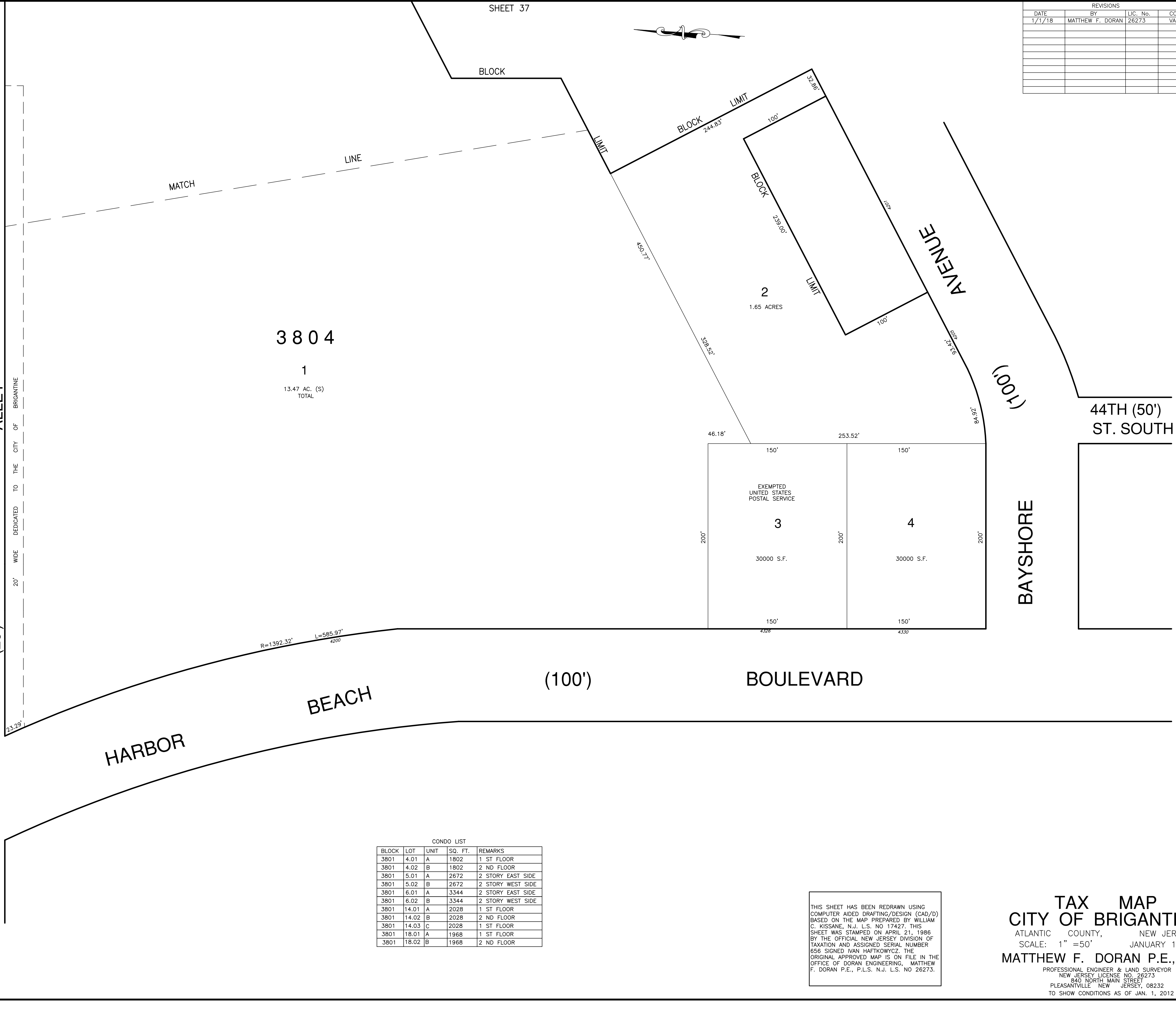
JEFFERSON AVENUE

90'	40'	1	4500 S.F.	3944
90'	40'	2	3600 S.F.	3940
90'	40'	3	3600 S.F.	3936
90'	40'	4	3600 S.F.	3932
90'	40'	5	3600 S.F.	3928
90'	40'	6	3600 S.F.	3924
90'	40'	7	3600 S.F.	3920
90'	40'	8	3600 S.F.	3916
90'	40'	9	3600 S.F.	3912
90'	40'	10	3600 S.F.	3908
90'	40'	11	3600 S.F.	3904
90'	40'	12	3600 S.F.	3900

125' (S)	50'	1	6250 S.F.	3897
125' (S)	50'	2	5000 S.F.	3895

MONROE (50') AVENUE

ALLEY (20') WIDE DEDICATED TO THE CITY OF BRIGANTINE



3804  
1  
13.47 AC. (S)  
TOTAL

CONDO LIST

BLOCK	LOT	UNIT	SQ. FT.	REMARKS
3801	4.01	A	1802	1 ST FLOOR
3801	4.02	B	1802	2 ND FLOOR
3801	5.01	A	2672	2 STORY EAST SIDE
3801	5.02	B	2672	2 STORY WEST SIDE
3801	6.01	A	3344	2 STORY EAST SIDE
3801	6.02	B	3344	2 STORY WEST SIDE
3801	14.01	A	2028	1 ST FLOOR
3801	14.02	B	2028	2 ND FLOOR
3801	14.03	C	2028	1 ST FLOOR
3801	18.01	A	1968	1 ST FLOOR
3801	18.02	B	1968	2 ND FLOOR

THIS SHEET HAS BEEN REDRAWN USING COMPUTER AIDED DRAFTING/DESIGN (CAD/D) BASED ON THE MAP PREPARED BY WILLIAM C. KISSANE, N.J. L.S. NO 17427. THIS SHEET WAS STAMPED ON APRIL 21, 1986 BY THE OFFICIAL NEW JERSEY DIVISION OF TAXATION AND ASSIGNED SERIAL NUMBER 656 SIGNED IVAN HAFKOWYCZ. THE ORIGINAL APPROVED MAP IS ON FILE IN THE OFFICE OF DORAN ENGINEERING, MATTHEW F. DORAN P.E., P.L.S. N.J. L.S. NO 26273.

**TAX MAP**  
**CITY OF BRIGANTINE**  
ATLANTIC COUNTY, NEW JERSEY  
SCALE: 1" = 50'  
**MATTHEW F. DORAN P.E., P.L.S.**  
PROFESSIONAL ENGINEER & LAND SURVEYOR  
NEW JERSEY LICENSE NO. 26273  
840 NORTH MAIN STREET  
PLEASANTVILLE, NEW JERSEY, 08232  
TO SHOW CONDITIONS AS OF JAN. 1, 2012

REVISIONS			
DATE	BY	LIC. No.	COMMENTS
1/1/18	MATTHEW F. DORAN	26273	VARIOUS