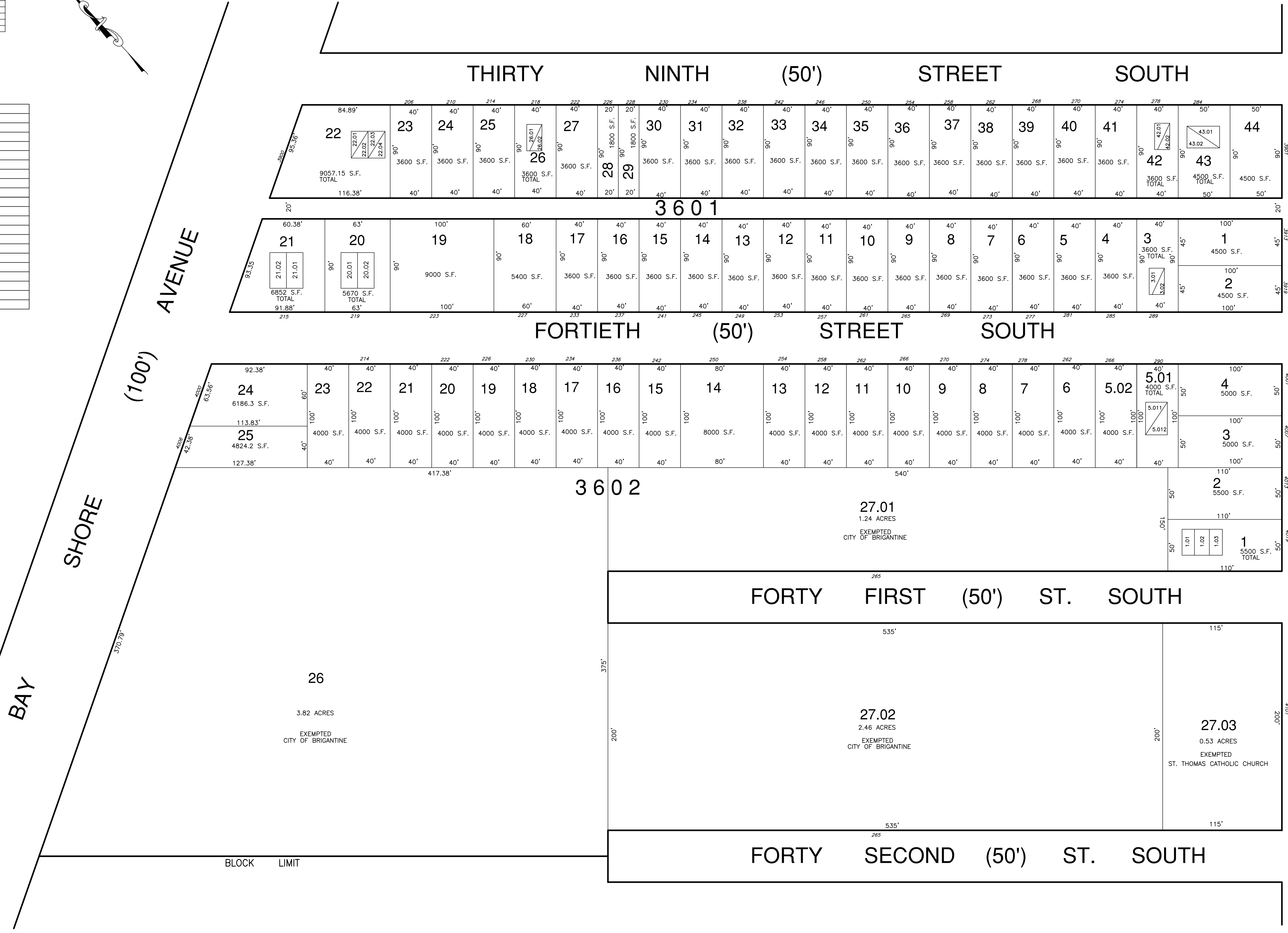


REVISIONS			
DATE	BY	LOC. No.	COMMENTS

CONDO LIST				
BLOCK	LOT	UNIT	SQ. FT.	REMARKS
3601	3.01	A	1302	1 ST FLOOR
3601	3.02	B	1302	2 ND FLOOR
3601	20.01	A	2210	S SIDE
3601	20.02	B	2210	N SIDE
3601	21.01	A	2876	RIGHT SIDE
3601	21.02	B	2401	LEFT SIDE
3601	22.01	A	1272	1 ST FLOOR
3601	22.02	B	1288	2 ND FLOOR
3601	22.03	C	1288	1 ST FLOOR
3601	22.04	D	1288	2 ND FLOOR
3601	26.01	A	1742	1 ST FLOOR
3601	26.02	B	1742	2 ND FLOOR
3601	42.01	A	1967	1 ST FLOOR
3601	42.02	B	1967	2 ND FLOOR
3601	43.01	A	1200	1 ST FLOOR
3601	43.02	B	1200	2 ND FLOOR
3602	1.01	A	1506	N E SIDE
3602	1.02	B	1464	MIDDLE UNIT
3602	1.03	C	1464	S W SIDE
3602	5.011	A	1221	1 ST FLOOR
3602	5.012	B	1221	2 ND FLOOR



SHEET 37

SHEET 30

SHEET 39

THIS SHEET HAS BEEN REDRAWN USING COMPUTER AIDED DRAFTING/DESIGN (CAD/D) BASED ON THE MAP PREPARED BY WILLIAM C. KISSANE, N.J. L.S. NO. 17427. THIS SHEET WAS STAMPED ON APRIL 21, 1986 BY THE OFFICIAL NEW JERSEY DIVISION OF TAXATION AND ASSIGNED SERIAL NUMBER 656 SIGNED IVAN HAFKOWICZ. THE ORIGINAL APPROVED MAP IS ON FILE IN THE OFFICE OF DORAN ENGINEERING, MATTHEW F. DORAN P.E., P.L.S. N.J. L.S. NO. 26273.

TAX MAP
CITY OF BRIGANTINE
 ATLANTIC COUNTY, NEW JERSEY
 SCALE: 1" = 50' JANUARY 1986
MATTHEW F. DORAN P.E., P.L.S.
 PROFESSIONAL ENGINEER & LAND SURVEYOR
 NEW JERSEY LICENSE NO. 26273
 840 NORTH MAIN STREET
 PLEASANTVILLE, NEW JERSEY, 08232
 TO SHOW CONDITIONS AS OF JAN. 1, 2012