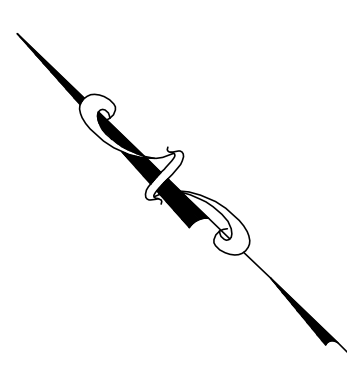
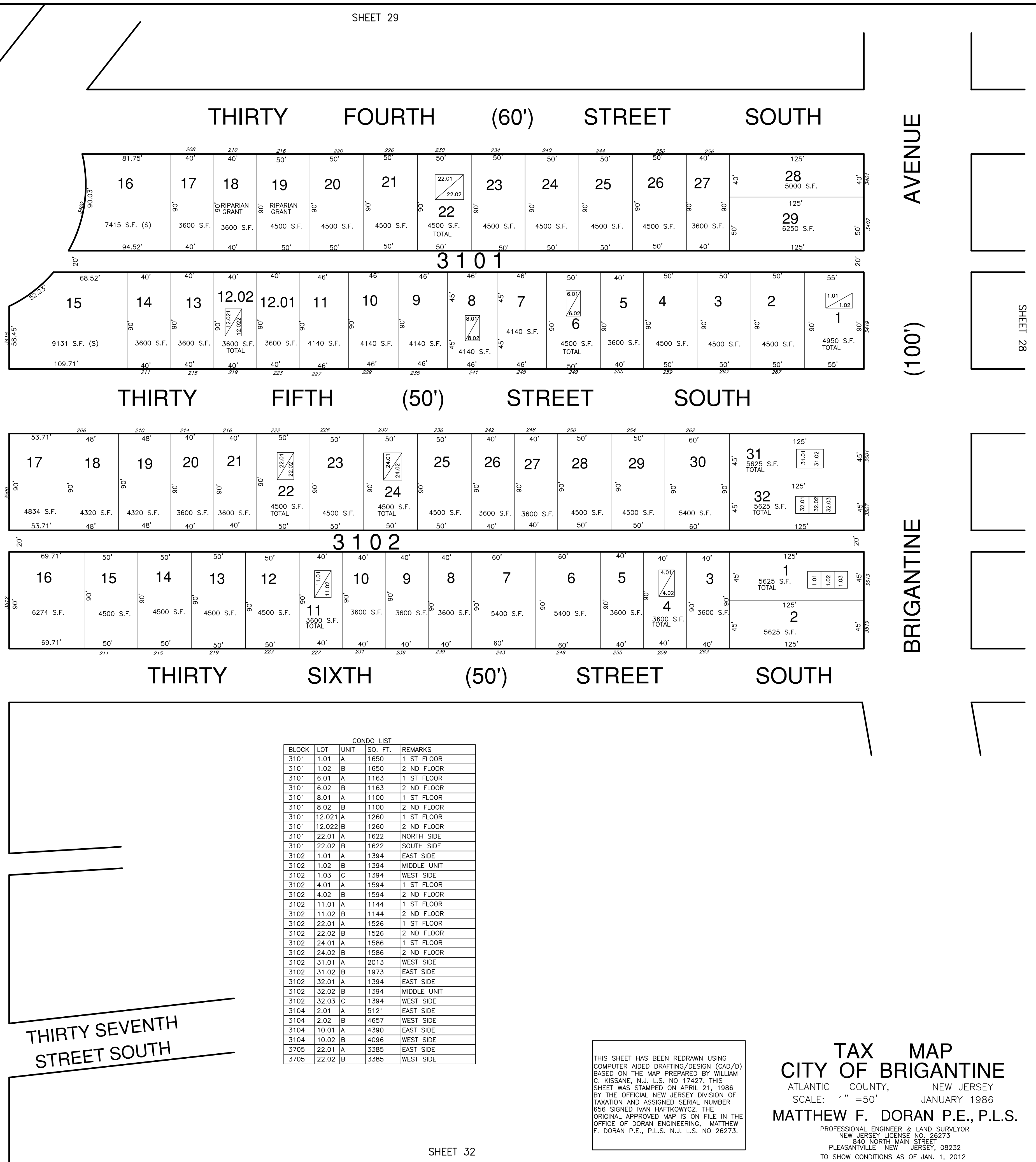
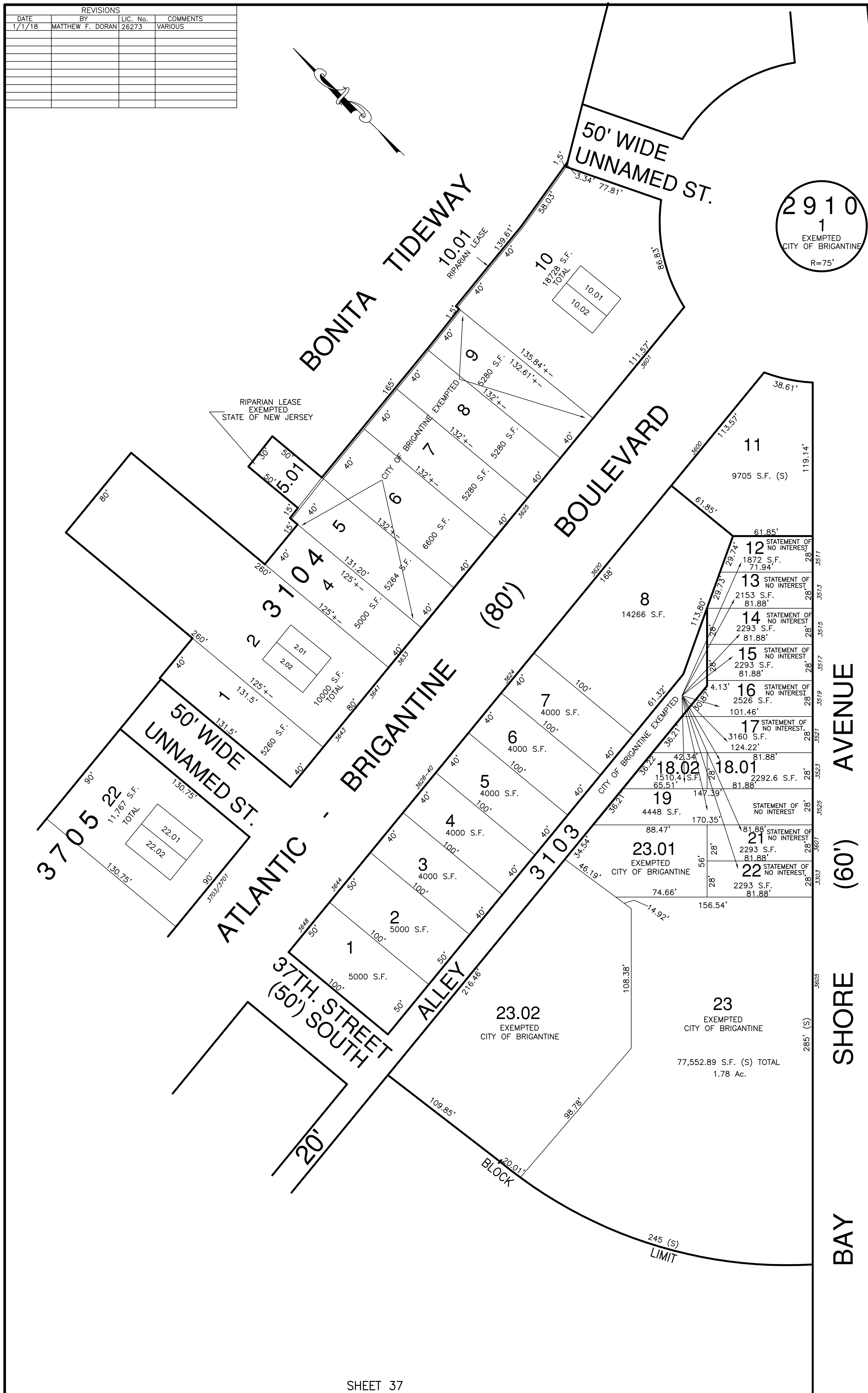


REVISIONS			
DATE	BY	LIC. No.	COMMENTS
1/17/18	MATTHEW F. DORAN	26273	VARIOUS



SHEET 29



SHEET 28

CONDO LIST

BLOCK	LOT	UNIT	SQ. FT.	REMARKS
3101	1.01	A	1650	1 ST FLOOR
3101	1.02	B	1650	2 ND FLOOR
3101	6.01	A	1163	1 ST FLOOR
3101	6.02	B	1163	2 ND FLOOR
3101	8.01	A	1100	1 ST FLOOR
3101	8.02	B	1100	2 ND FLOOR
3101	12.021	A	1260	1 ST FLOOR
3101	12.022	B	1260	2 ND FLOOR
3101	22.01	A	1622	NORTH SIDE
3101	22.02	B	1622	SOUTH SIDE
3102	1.01	A	1394	EAST SIDE
3102	1.02	B	1394	MIDDLE UNIT
3102	1.03	C	1394	WEST SIDE
3102	4.01	A	1594	1 ST FLOOR
3102	4.02	B	1594	2 ND FLOOR
3102	11.01	A	1144	1 ST FLOOR
3102	11.02	B	1144	2 ND FLOOR
3102	22.01	A	1526	1 ST FLOOR
3102	22.02	B	1526	2 ND FLOOR
3102	24.01	A	1586	1 ST FLOOR
3102	24.02	B	1586	2 ND FLOOR
3102	31.01	A	2013	WEST SIDE
3102	31.02	B	1973	EAST SIDE
3102	32.01	A	1394	EAST SIDE
3102	32.02	B	1394	MIDDLE UNIT
3102	32.03	C	1394	WEST SIDE
3104	2.01	A	5121	EAST SIDE
3104	2.02	B	4657	WEST SIDE
3104	10.01	A	4390	EAST SIDE
3104	10.02	B	4096	WEST SIDE
3705	22.01	A	3385	EAST SIDE
3705	22.02	B	3385	WEST SIDE

THIS SHEET HAS BEEN REDRAWN USING COMPUTER AIDED DRAFTING/DESIGN (CAD/D) BASED ON THE MAP PREPARED BY WILLIAM C. KISSANE, N.J. L.S. NO 17427. THIS SHEET WAS STAMPED ON APRIL 21, 1986 BY THE OFFICIAL NEW JERSEY DIVISION OF TAXATION AND ASSIGNED SERIAL NUMBER 656 SIGNED IVAN HAFKOWYCZ, THE ORIGINAL APPROVED MAP IS ON FILE IN THE OFFICE OF DORAN ENGINEERING, MATTHEW F. DORAN P.E., P.L.S. N.J. L.S. NO 26273.

TAX MAP
CITY OF BRIGANTINE
 ATLANTIC COUNTY, NEW JERSEY
 SCALE: 1" = 50' JANUARY 1986
MATTHEW F. DORAN P.E., P.L.S.
 PROFESSIONAL ENGINEER & LAND SURVEYOR
 NEW JERSEY LICENSE NO. 26273
 840 NORTH MAIN STREET
 PLEASANTVILLE, NEW JERSEY, 08232
 TO SHOW CONDITIONS AS OF JAN. 1, 2012

SHEET 37

SHEET 32