

SOUTH

SOUTH

SOUTH

SOUTH

SOUTH

SOUTH

OCEAN

(80')

AVENUE

32 ND STREET

31 ST STREET

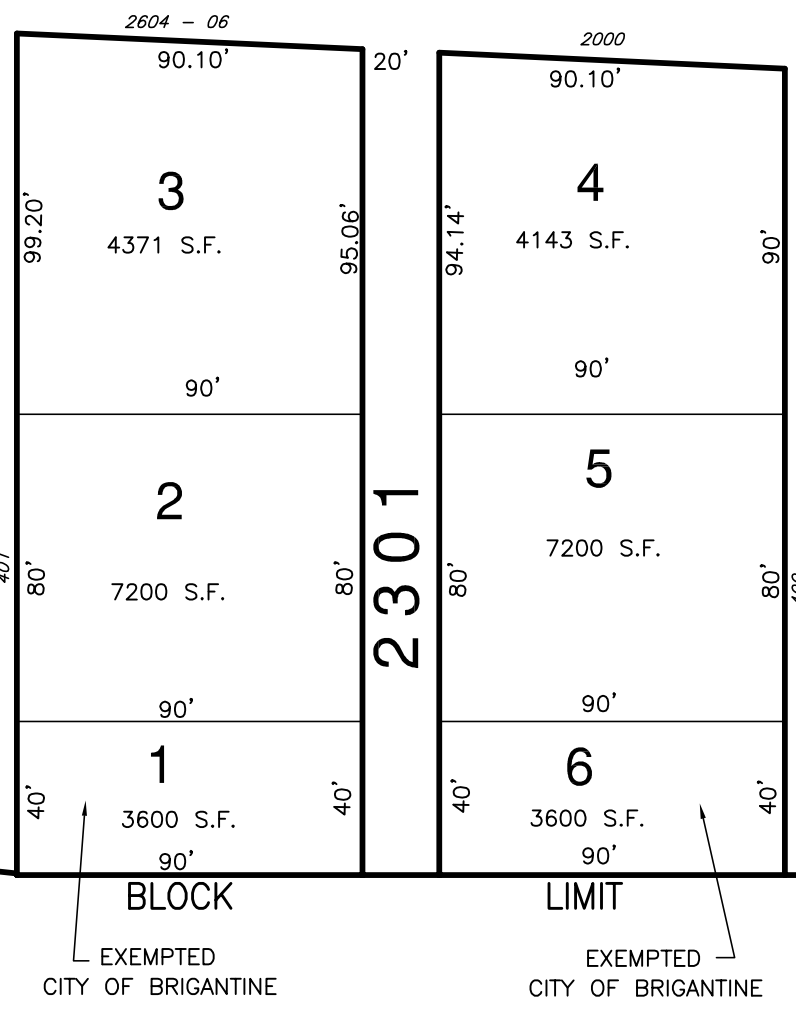
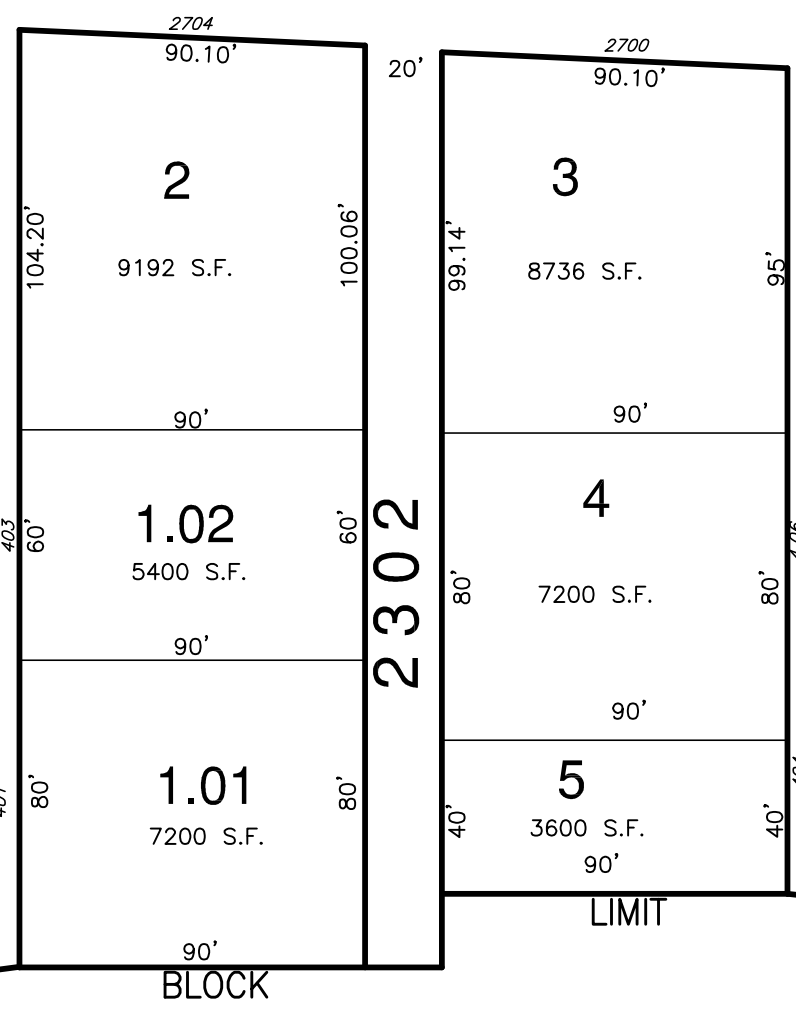
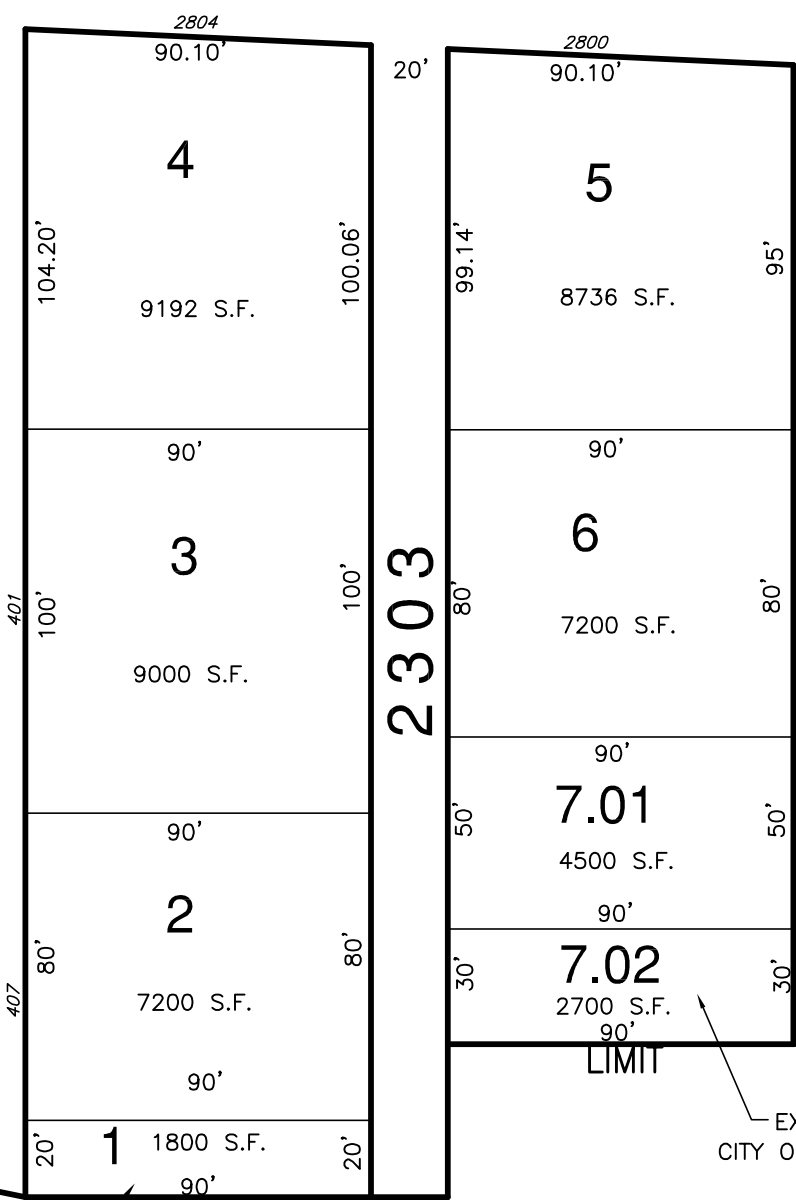
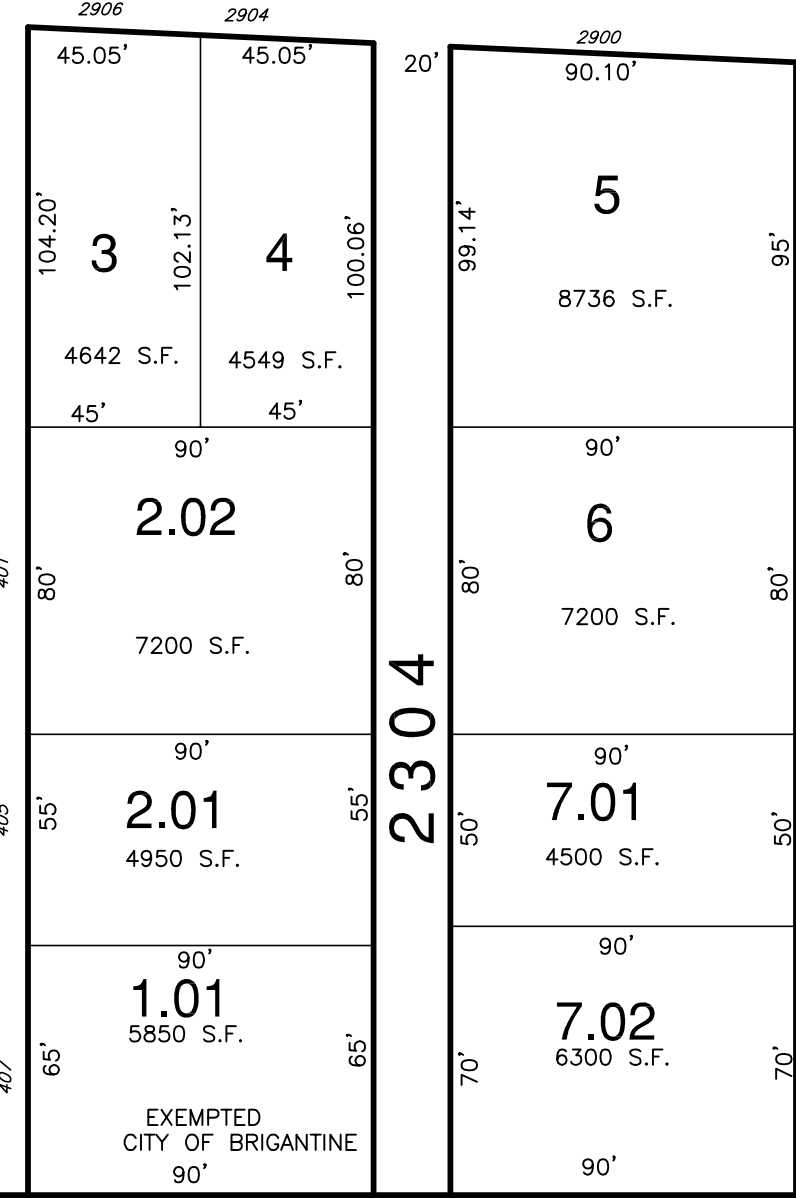
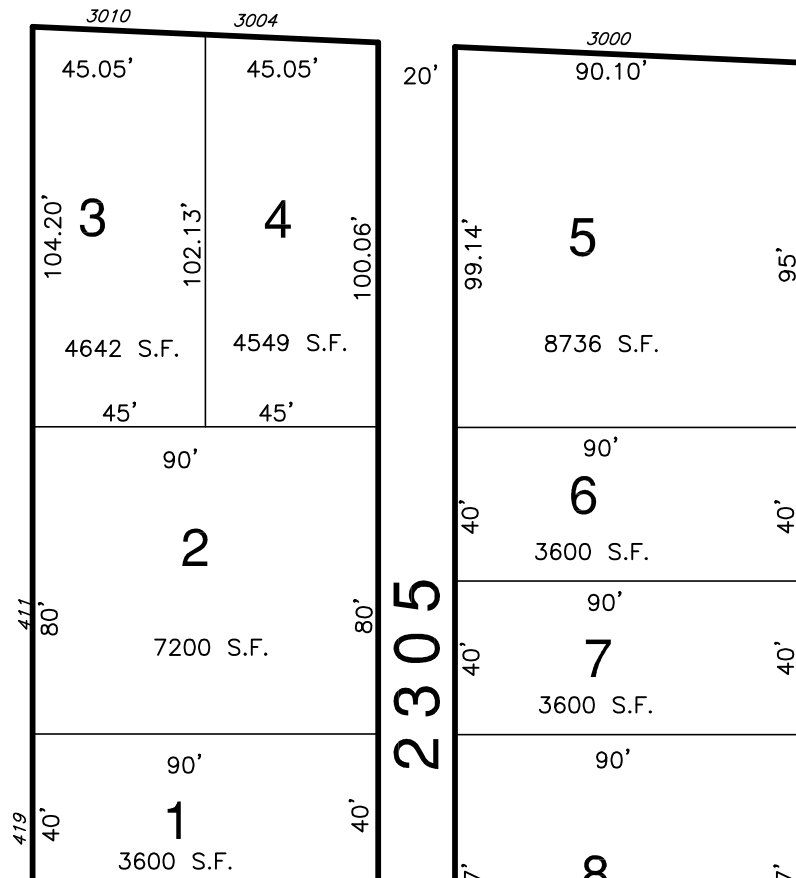
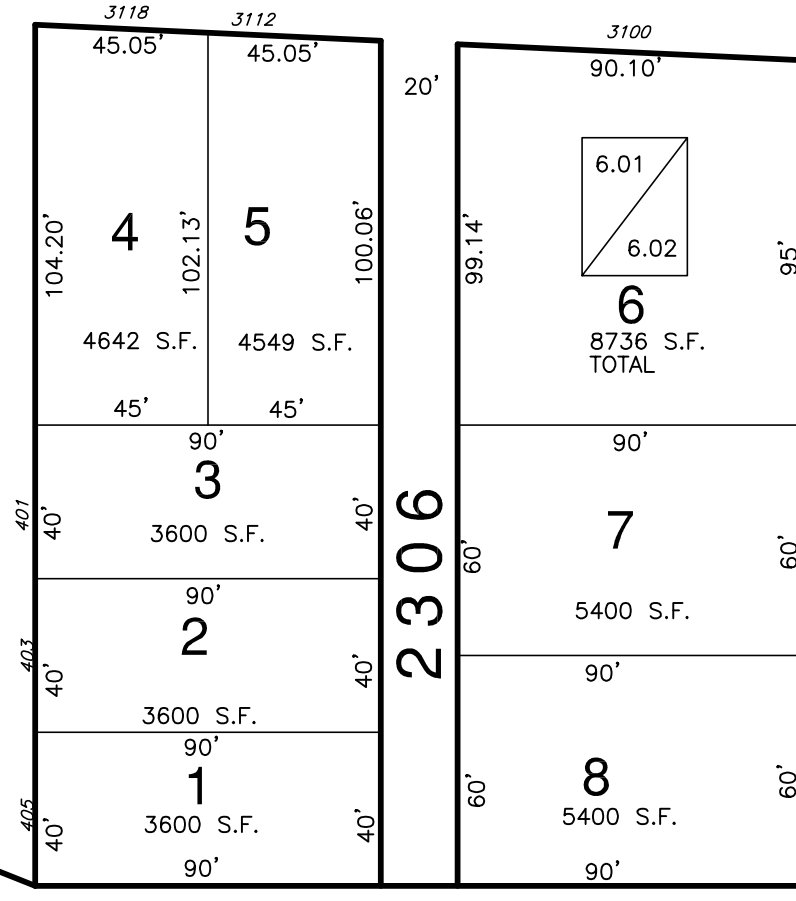
30 TH STREET

29 TH STREET

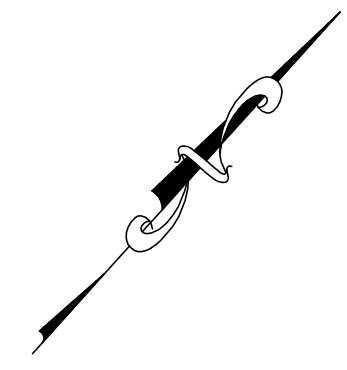
28 TH STREET

27 TH STREET

26 TH STREET



DEVELOPMENT RESTRICTION LINE



APPROX. MEAN HIGH WATER LINE, LOCATED MAY 1983

SEE KEY SHEET 3

CONDO LIST

BLOCK	LOT	UNIT	SQ. FT.	REMARKS
2306	6.01	A	1380 SF	1 ST FLOOR
2306	6.02	B	1248 SF	2 ND FLOOR

REVISIONS

DATE	BY	LIC. No.	COMMENTS
1/1/18	MATTHEW F. DORAN	26273	BL. 2302 LOT 1

THIS SHEET HAS BEEN REDRAWN USING COMPUTER AIDED DRAFTING/DESIGN (CAD/D) BASED ON THE MAP PREPARED BY WILLIAM C. KISSANE, N.J. L.S. NO 17422. THIS SHEET WAS STAMPED ON APRIL 21, 1986 BY THE OFFICIAL NEW JERSEY DIVISION OF TAXATION AND ASSIGNED SERIAL NUMBER 656 SIGNED IVAN HAFTKOWYCZ. THE ORIGINAL APPROVED MAP IS ON FILE IN THE OFFICE OF DORAN ENGINEERING, MATTHEW F. DORAN P.E., P.L.S. N.J. L.S. NO 26273.

TAX MAP
CITY OF BRIGANTINE
 ATLANTIC COUNTY, NEW JERSEY
 SCALE: 1" = 50' JANUARY 1986
MATTHEW F. DORAN P.E., P.L.S.
 PROFESSIONAL ENGINEER & LAND SURVEYOR
 NEW JERSEY LICENSE NO. 26273
 840 NORTH MAIN STREET
 PLEASANTVILLE, NEW JERSEY, 08232
 TO SHOW CONDITIONS AS OF JAN. 1, 2012