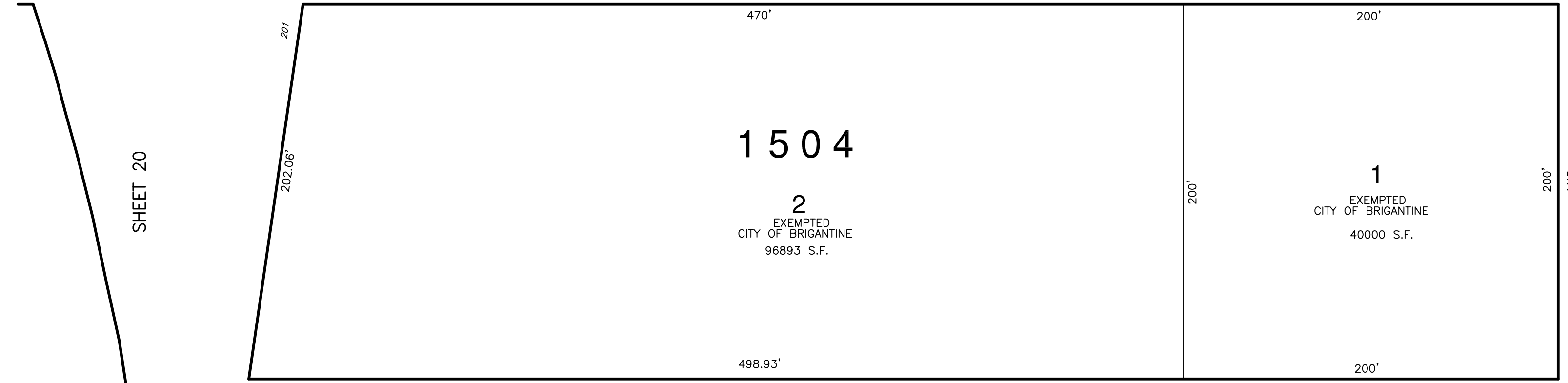
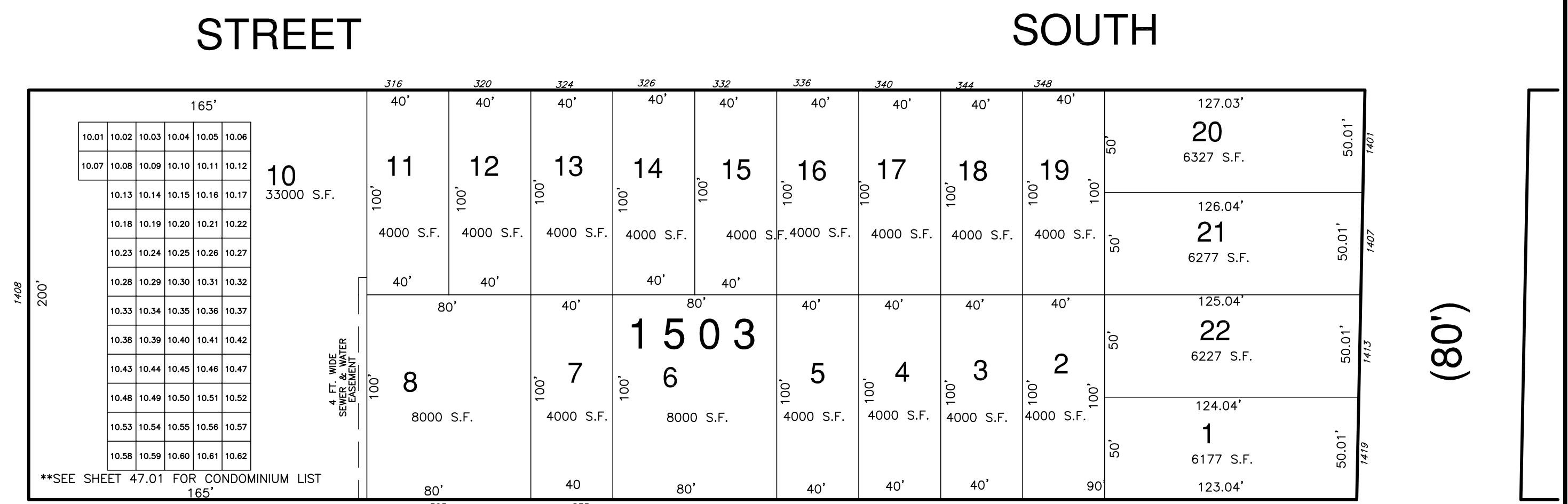


AVENUE

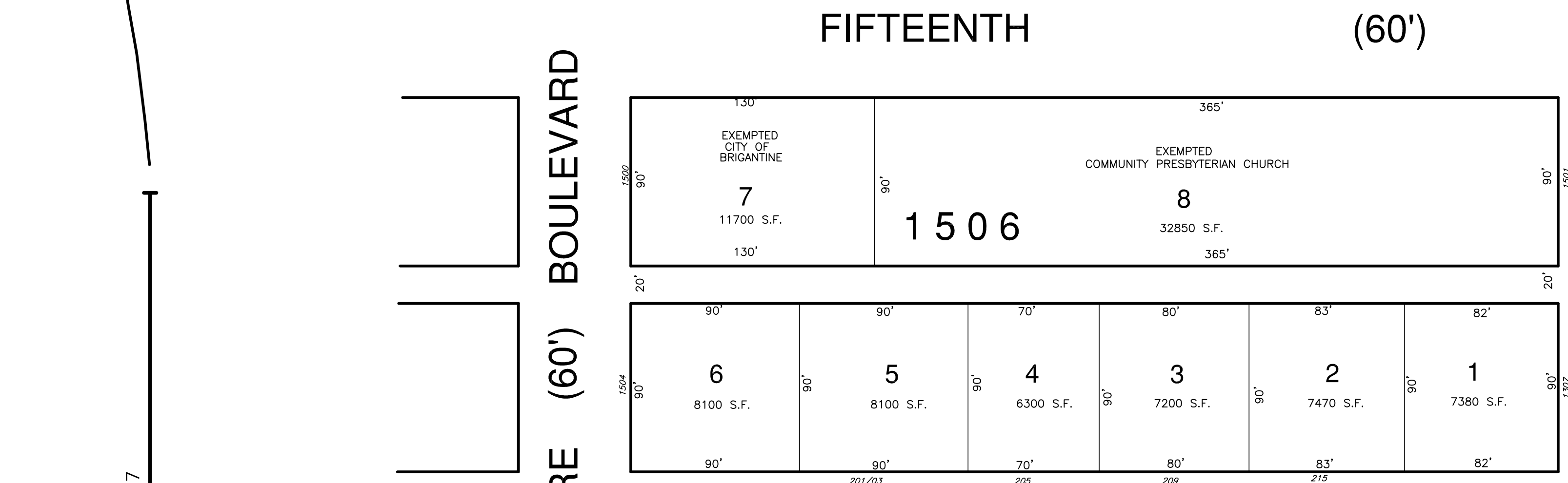
AVENUE



(100')

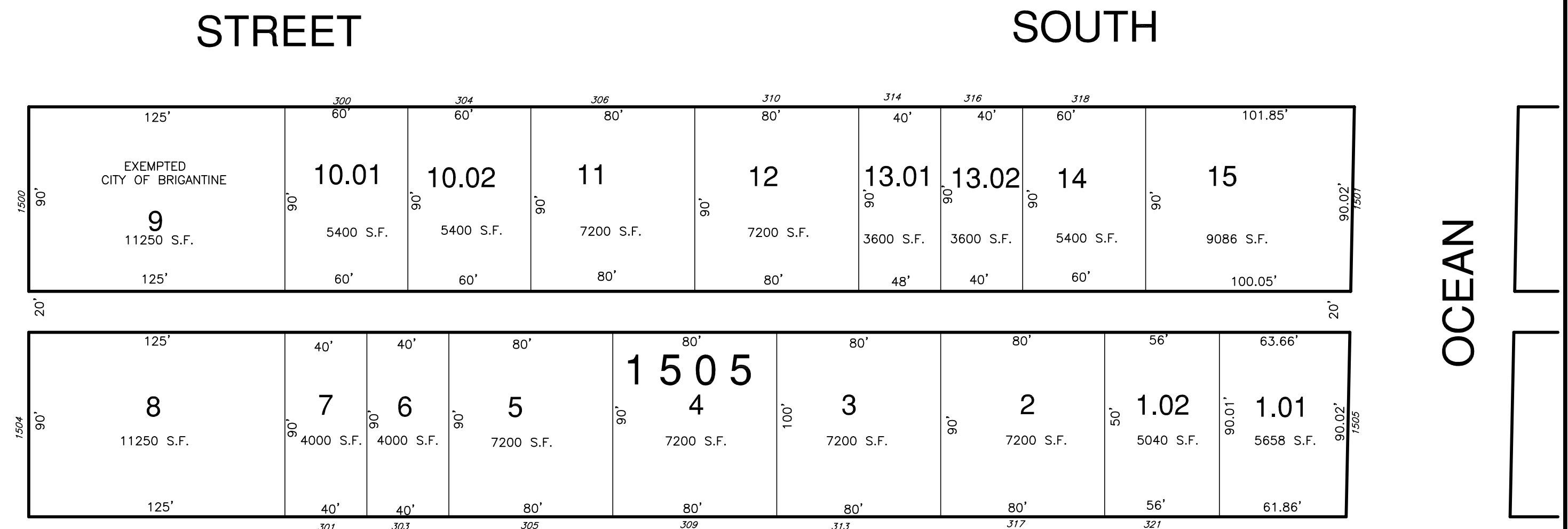


(80')



BRIGANTINE

OCEAN



REVISIONS			
DATE	BY	LIC. No.	COMMENTS

THIS SHEET HAS BEEN REDRAWN USING COMPUTER AIDED DRAFTING/DESIGN (CAD/D) BASED ON THE MAP PREPARED BY WILLIAM C. KISSANE, N.J. L.S. NO 17427. THIS SHEET WAS STAMPED ON APRIL 21, 1986 BY THE OFFICIAL NEW JERSEY DIVISION OF TAXATION AND ASSIGNED SERIAL NUMBER 656 SIGNED IVAN HAFKOWICZ, THE ORIGINAL APPROVED MAP IS ON FILE IN THE OFFICE OF DORAN ENGINEERING, MATTHEW F. DORAN P.E., P.L.S. N.J. L.S. NO 26273.

**TAX MAP**  
**CITY OF BRIGANTINE**  
 ATLANTIC COUNTY, NEW JERSEY  
 SCALE: 1" = 50' JANUARY 1986  
**MATTHEW F. DORAN P.E., P.L.S.**  
 PROFESSIONAL ENGINEER & LAND SURVEYOR  
 NEW JERSEY LICENSE NO. 26273  
 840 NORTH MAIN STREET  
 PLEASANTVILLE, NEW JERSEY, 08232  
 TO SHOW CONDITIONS AS OF JAN. 1, 2012