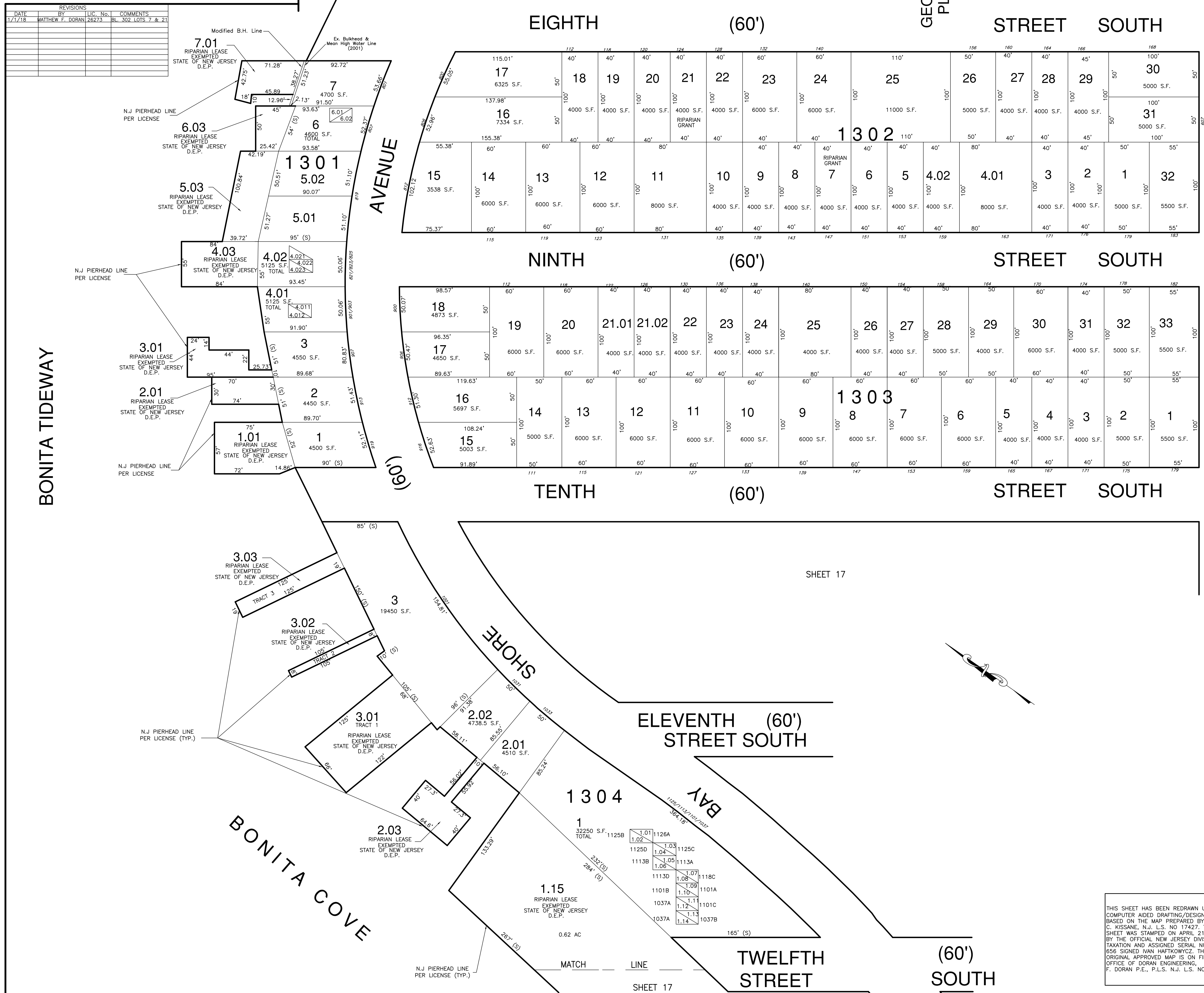


REVISIONS			
DATE	BY	LIC. No.	COMMENTS
1/1/18	MATTHEW F. DORAN	26273	BL. 302 LOTS 7 & 21



AVENUE
 (60')
 BEACH
 (60')

BONITA TIDEWAY
 (60')

BONITA COVE
 (60')

SHORE
 BAY

CONDO LIST

BLOCK	LOT	UNIT	SQ. FT.	REMARKS
1301	4.011	903	1850	1 ST FLOOR
1301	4.012	901	1850	2 ND FLOOR
1301	4.021	821	1808	1 ST FLOOR
1301	4.022	823	1808	2 ND FLOOR
1301	4.023	825	1808	END UNIT
1301	6.01	A	1832	1 ST FLOOR
1301	6.02	B	1838	2 ND FLOOR
1304	1.01	1A	2256 SF	1 ST FLOOR
1304	1.02	1B	1792 SF	1 ST FLOOR
1304	1.03	1C	1792 SF	1 ST FLOOR
1304	1.04	1D	1792 SF	1 ST FLOOR
1304	1.05	2A	1824 SF	2 ND FLOOR
1304	1.06	2B	1824 SF	2 ND FLOOR
1304	1.07	2C	1824 SF	2 ND FLOOR
1304	1.08	2D	1824 SF	2 ND FLOOR
1304	1.09	3A	1408 SF	3 RD FLOOR
1304	1.10	3B	1408 SF	3 RD FLOOR
1304	1.11	3C	1408 SF	3 RD FLOOR
1304	1.12	4A	1408 SF	4 TH FLOOR
1304	1.13	4B	1408 SF	4 TH FLOOR
1304	1.14	4C	1408 SF	4 TH FLOOR

THIS SHEET HAS BEEN REDRAWN USING COMPUTER AIDED DRAFTING/DESIGN (CAD/D) BASED ON THE MAP PREPARED BY WILLIAM C. KISSANE, N.J. L.S. NO 17427. THIS SHEET WAS STAMPED ON APRIL 21, 1986 BY THE ORIGINAL NEW JERSEY DIVISION OF TAXATION AND ASSIGNED SERIAL NUMBER 656 SIGNED IVAN HAFKOWYCZ, THE ORIGINAL APPROVED MAP IS ON FILE IN THE OFFICE OF DORAN ENGINEERING, MATTHEW F. DORAN P.E., P.L.S. N.J. L.S. NO 26273.

TAX MAP
CITY OF BRIGANTINE
 ATLANTIC COUNTY, NEW JERSEY
 SCALE: 1" = 50' JANUARY 1986
MATTHEW F. DORAN P.E., P.L.S.
 PROFESSIONAL ENGINEER & LAND SURVEYOR
 NEW JERSEY LICENSE NO. 26273
 840 NORTH MAIN STREET
 PLEASANTVILLE NEW JERSEY, 08232
 TO SHOW CONDITIONS AS OF JAN. 1, 2012

SHEET 8

SHEET 11