

SHEET 7

SHEET 12

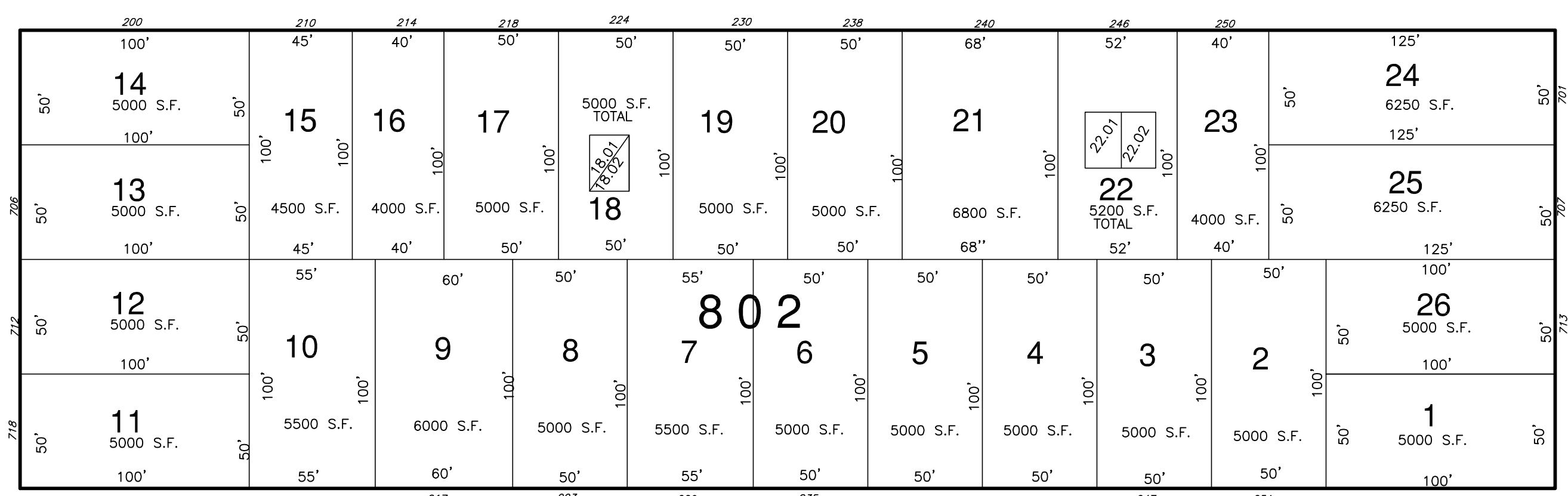
AVENUE

(60')

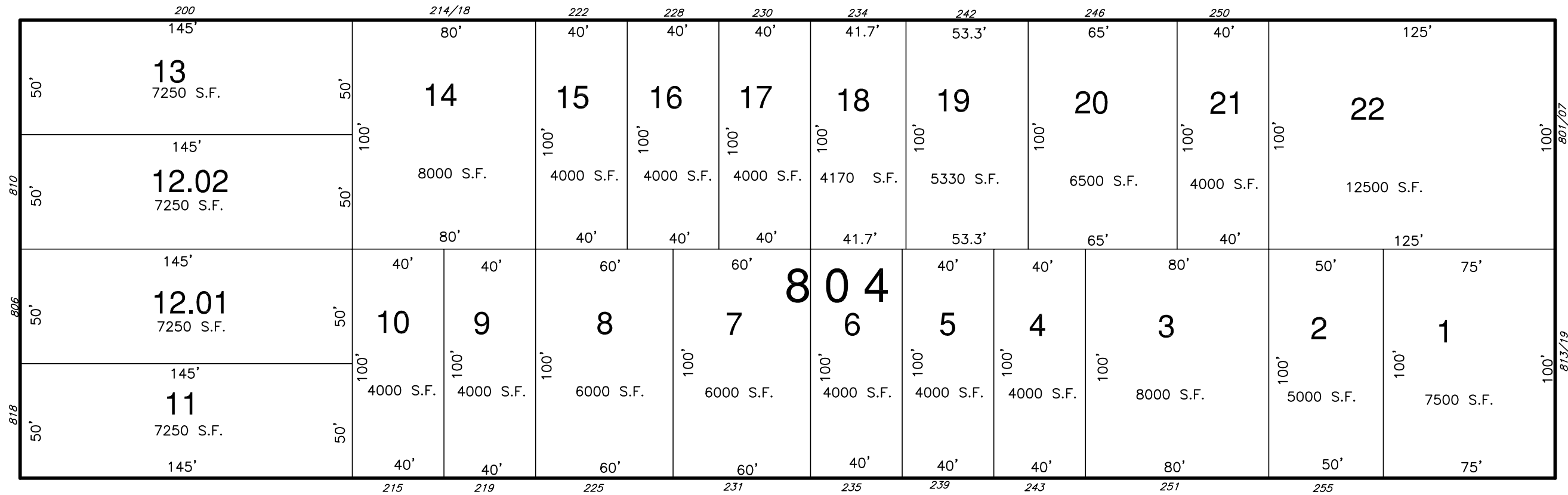
SHEET 13

BEACH

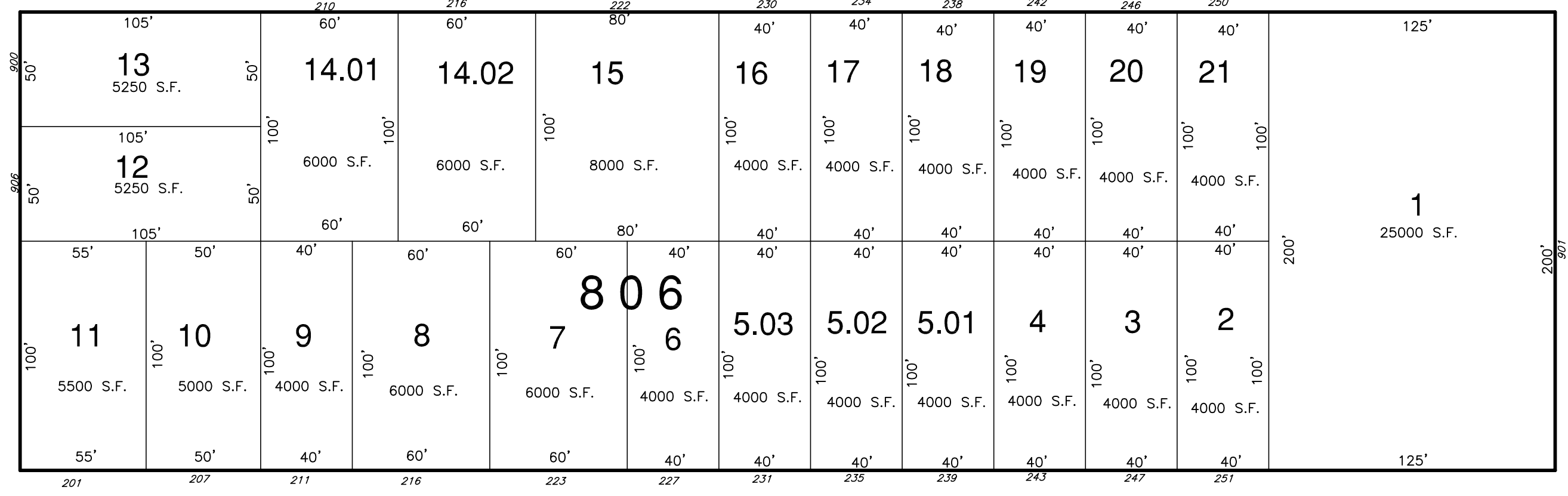
SEVENTH (60')



EIGHT (60')

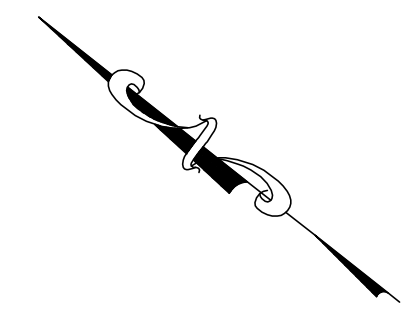


NINTH (60')

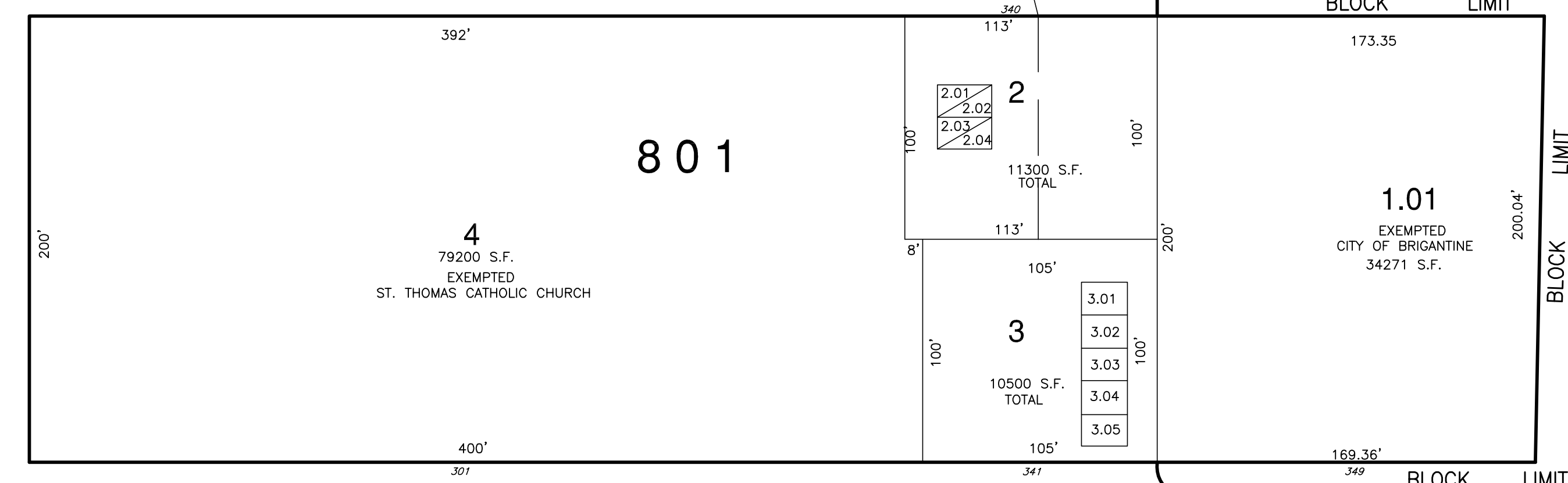


TENTH (60')

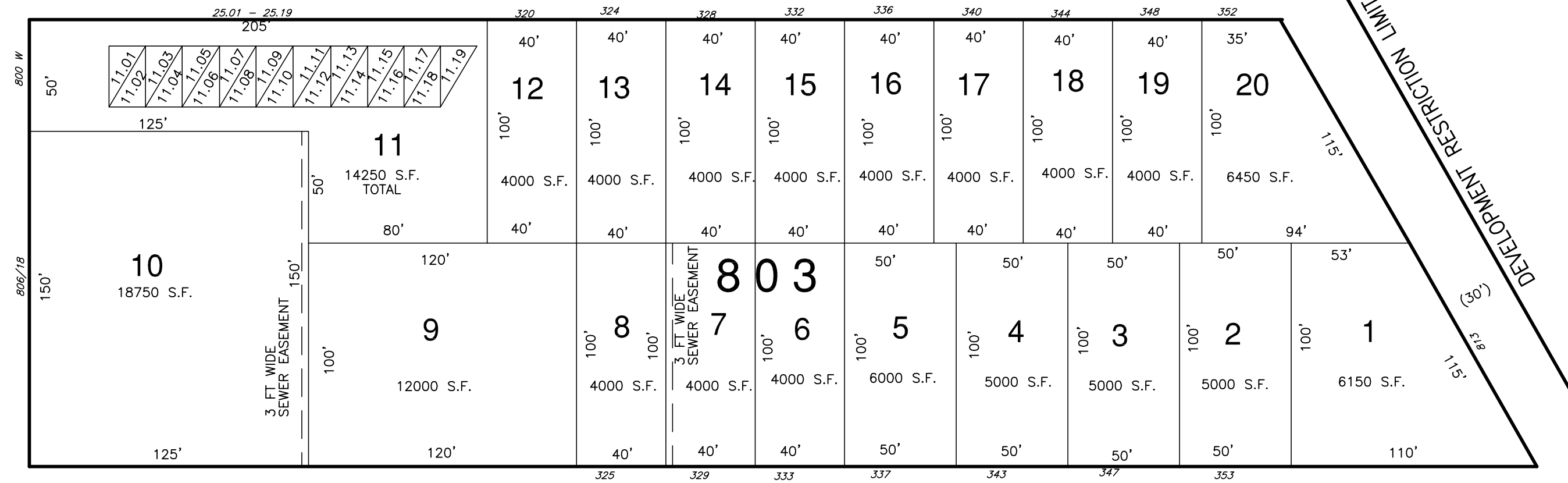
CONDO LIST A					CONDO LIST B				
BLOCK	LOT	UNIT	SQ. FT.	REMARKS	BLOCK	LOT	UNIT	SQ. FT.	REMARKS
801	2.01	A	2108 SF	1 ST FLOOR	803	11.04	103	360 SF	1 ST FLOOR
801	2.02	B	2108 SF	2 ND FLOOR	803	11.05	104	360 SF	2 ND FLOOR
801	2.03	C	2108 SF	1 ST FLOOR	803	11.06	105	360 SF	1 ST FLOOR
801	2.04	D	2108 SF	2 ND FLOOR	803	11.07	106	224 SF	2 ND FLOOR
801	3.01	1	2108 SF	SIDE BY SIDE	803	11.08	107	196 SF	1 ST FLOOR
801	3.02	2	2108 SF	SIDE BY SIDE	803	11.09	108	196 SF	2 ND FLOOR
801	3.03	3	2108 SF	SIDE BY SIDE	803	11.10	209	196 SF	1 ST FLOOR
801	3.04	4	2108 SF	SIDE BY SIDE	803	11.11	210	196 SF	2 ND FLOOR
801	3.05	5	2108 SF	END UNIT	803	11.12	211	360 SF	1 ST FLOOR
802	18.01	A	1296 SF	1 ST FLOOR	803	11.13	212	360 SF	2 ND FLOOR
802	18.02	B	1296 SF	2 ND FLOOR	803	11.14	214	360 SF	1 ST FLOOR
802	22.01	A	1296 SF	1 ST FLOOR	803	11.15	215	360 SF	2 ND FLOOR
802	22.02	B	1296 SF	2 ND FLOOR	803	11.16	216	360 SF	1 ST FLOOR
803	11.01	100	532 SF	1 ST FLOOR	803	11.17	217	360 SF	2 ND FLOOR
803	11.02	101	360 SF	2 ND FLOOR	803	11.18	HU	720 SF	HOUSE UNIT UPPER
803	11.03	102	360 SF	1 ST FLOOR	803	11.19	HL	540 SF	HOUSE UNIT LOWER



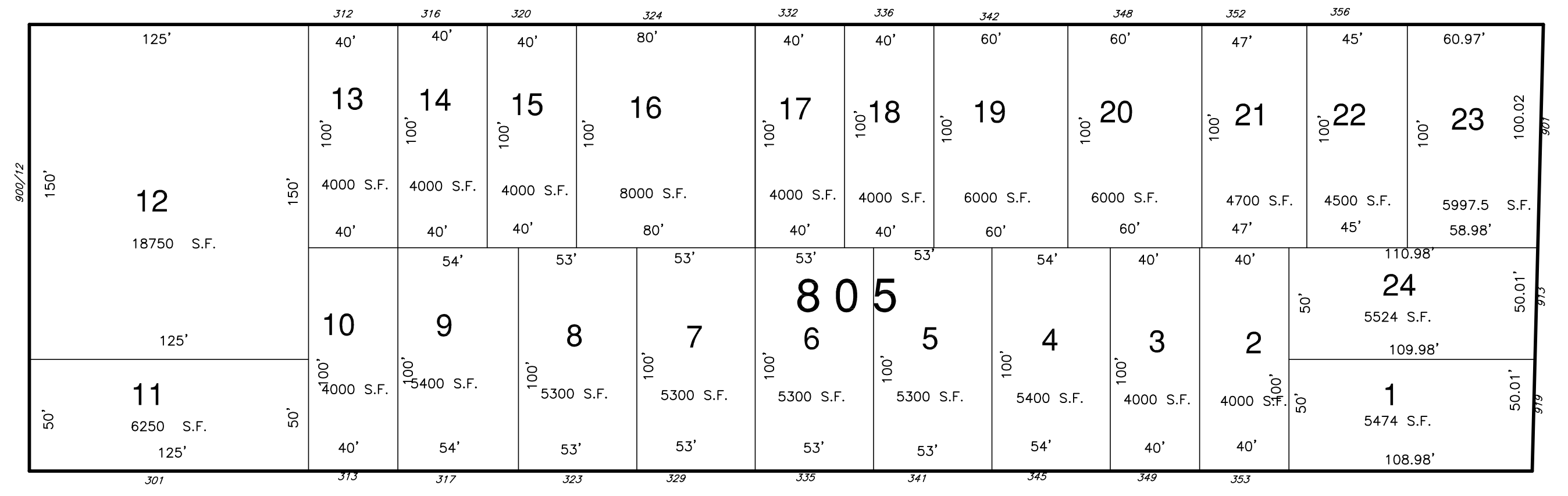
STREET SOUTH



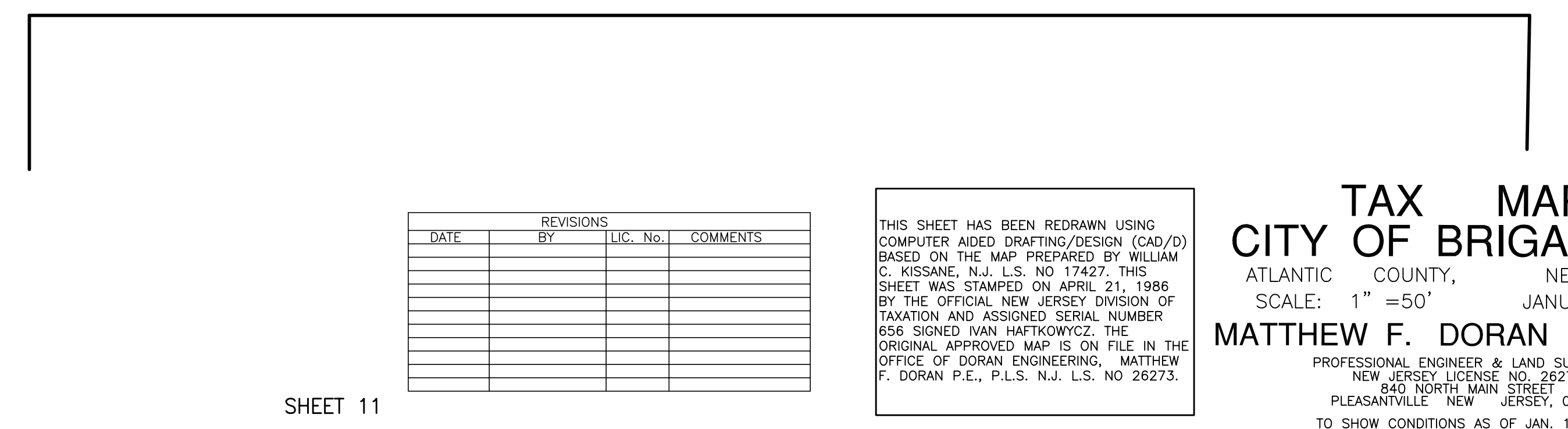
STREET SOUTH



STREET SOUTH



STREET SOUTH



AVENUE

(60')

BRIGANTINE

SHEET 10

OCEAN AVENUE

MATCH LINE

SHEET 11

REVISIONS			
DATE	BY	LIC. NO.	COMMENTS

THIS SHEET HAS BEEN REDRAWN USING COMPUTER AIDED DRAFTING/DESIGN (CAD/D) BASED ON THE MAP PREPARED BY WILLIAM C. KISSANE, N.J. L.S. NO. 17427. THIS SHEET WAS STAMPED ON APRIL 21, 1986 BY THE OFFICIAL NEW JERSEY DIVISION OF TAXATION AND ASSIGNED SERIAL NUMBER 656 SIGNED IVAN HAFKOWYCZ. THE ORIGINAL APPROVED MAP IS ON FILE IN THE OFFICE OF DORAN ENGINEERING, MATTHEW F. DORAN P.E., P.L.S. N.J. L.S. NO. 26273.

TAX MAP
CITY OF BRIGANTINE
 ATLANTIC COUNTY, NEW JERSEY
 SCALE: 1" = 50' JANUARY 1986
MATTHEW F. DORAN P.E., P.L.S.
 PROFESSIONAL ENGINEER & LAND SURVEYOR
 NEW JERSEY LICENSE NO. 25273
 840 NORTH MAIN STREET
 PLEASANTVILLE, NEW JERSEY 08232
 TO SHOW CONDITIONS AS OF JAN. 1, 2012