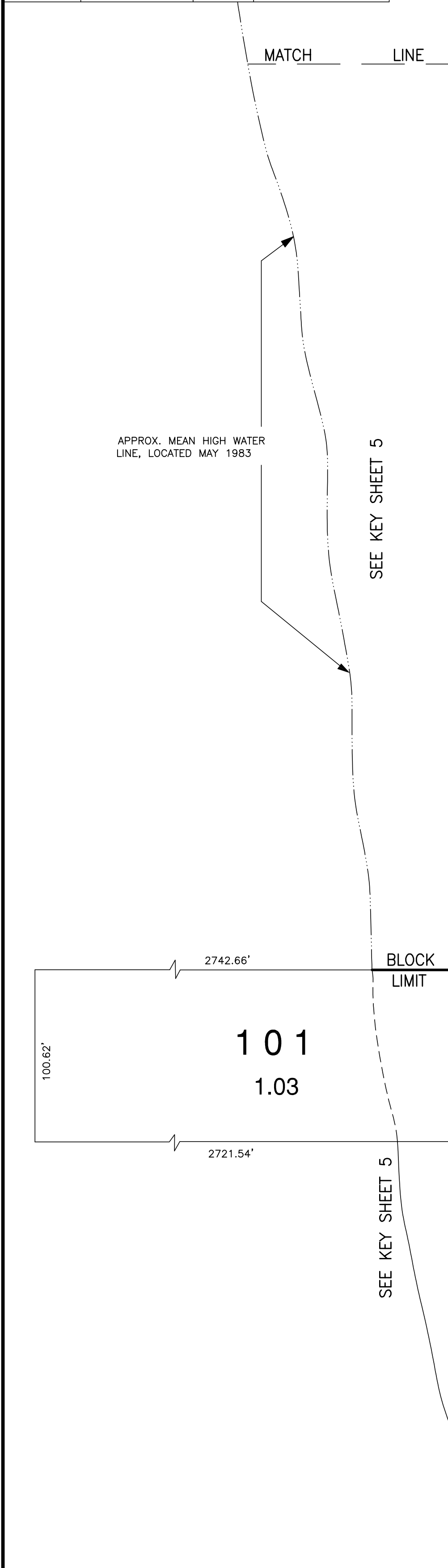
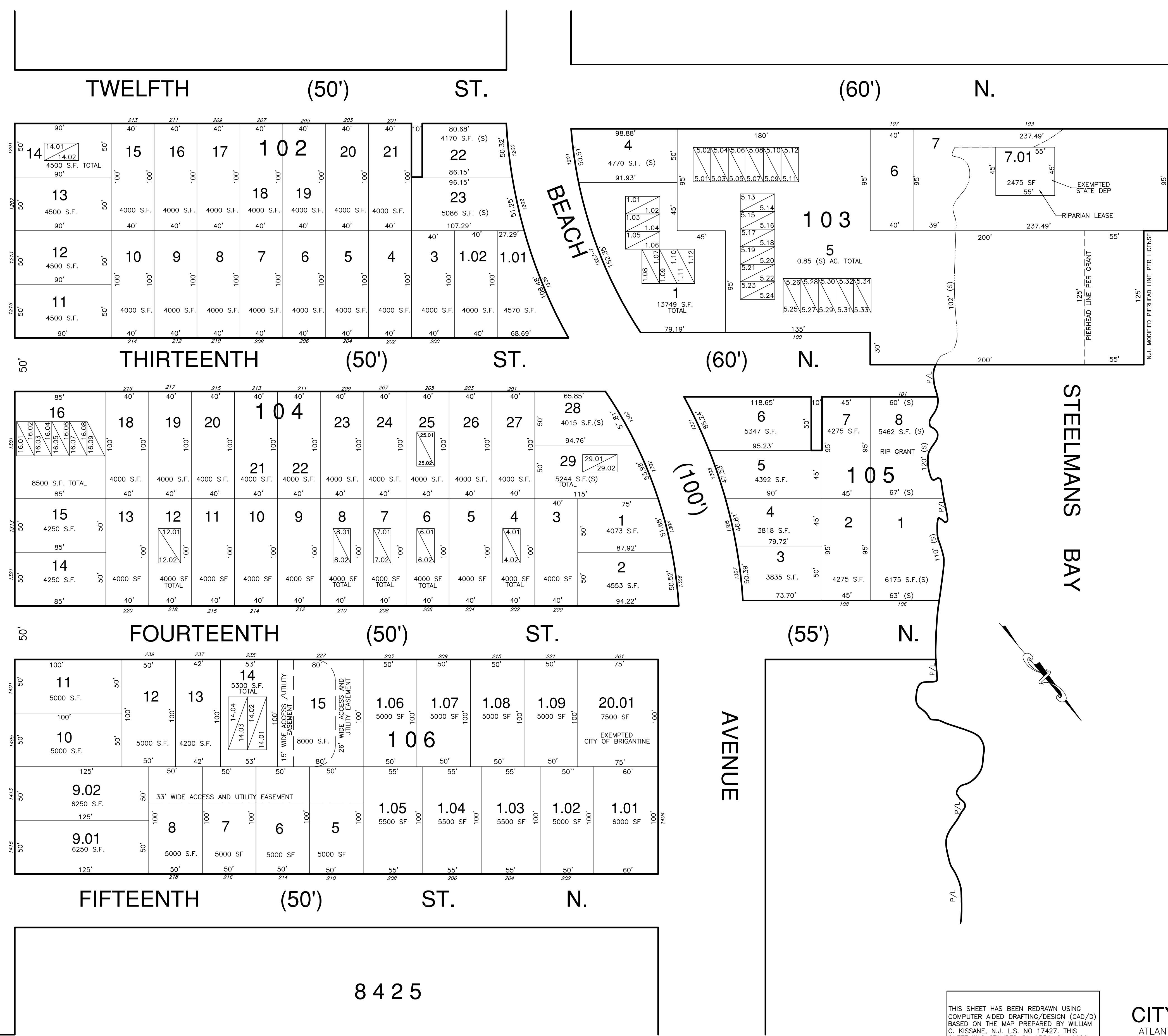


REVISIONS			
DATE	BY	LIC. No.	COMMENTS
1/1/18	MATTHEW F. DORAN	26273	BL. 102 LOTS 1.01/1.02



BRIGANTINE AVENUE (100')



CONDO LIST				
BLOCK	LOT	UNIT	SQ. FT.	REMARKS
102	14.01	A	1935	1 ST FLOOR
102	14.02	B	1935	2 ND FLOOR
103	1.01	1	609	1 ST FLOOR
103	1.02	2	609	2 ND FLOOR
103	1.03	3	609	1 ST FLOOR
103	1.04	4	834	2 ND FLOOR
103	1.05	5	609	1 ST FLOOR
103	1.06	6	609	2 ND FLOOR
103	1.07	7	609	1 ST FLOOR
103	1.08	8	609	2 ND FLOOR
103	1.09	9	609	1 ST FLOOR
103	1.10	10	609	2 ND FLOOR
103	1.11	11	609	1 ST FLOOR
103	1.12	12	778	2 ND FLOOR
103	5.01	101	504	1 ST FLOOR
103	5.02	102	504	2 ND FLOOR
103	5.03	111	560	1 ST FLOOR
103	5.04	112	560	2 ND FLOOR
103	5.05	113	560	1 ST FLOOR
103	5.06	114	504	2 ND FLOOR
103	5.07	115	504	1 ST FLOOR
103	5.08	121	744	2 ND FLOOR
103	5.09	122	744	1 ST FLOOR
103	5.10	123	744	2 ND FLOOR
103	5.11	124	669	1 ST FLOOR
103	5.12	125	669	2 ND FLOOR
103	5.13	211	504	1 ST FLOOR
103	5.14	212	504	2 ND FLOOR
103	5.15	213	504	1 ST FLOOR
103	5.16	214	504	2 ND FLOOR
103	5.17	215	504	1 ST FLOOR
103	5.18	216	504	2 ND FLOOR
103	5.19	221	669	1 ST FLOOR
103	5.20	222	669	2 ND FLOOR
103	5.21	223	669	1 ST FLOOR
103	5.22	224	669	2 ND FLOOR
103	5.23	225	669	1 ST FLOOR
103	5.24	226	669	2 ND FLOOR
103	5.25	311	560	1 ST FLOOR
103	5.26	312	560	2 ND FLOOR
103	5.27	313	560	1 ST FLOOR
103	5.28	314	560	2 ND FLOOR
103	5.29	315	560	1 ST FLOOR
103	5.30	321	744	2 ND FLOOR
103	5.31	322	744	1 ST FLOOR
103	5.32	323	744	2 ND FLOOR
103	5.33	324	744	1 ST FLOOR
103	5.34	325	744	2 ND FLOOR
104	4.01	A	1590	202 A
104	4.02	B	1590	202 B
104	6.01	A	1312	1ST FLOOR
104	6.02	B	1312	2ND FLOOR
104	7.01	A	1342	1ST FLOOR
104	7.02	B	1381	2ND FLOOR
104	8.01	A	1569	EASTERLY SIDE
104	8.02	B	1569	WESTERLY SIDE
104	12.01	A	1500	NORTHERLY SIDE
104	12.02	B	1500	SOUTHERLY SIDE
104	16.01	1	717	1 ST FLOOR
104	16.02	2	813	2 ND FLOOR
104	16.03	3	784	1 ST FLOOR
104	16.04	4	960	2 ND FLOOR
104	16.05	5	913	1 ST FLOOR
104	16.06	6	813	2 ND FLOOR
104	16.07	7	784	1 ST FLOOR
104	16.08	8	960	2 ND FLOOR
104	16.09	9	922	1 ST FLOOR
104	25.01	A	1476	1ST FLOOR
104	25.02	B	1476	2ND FLOOR
104	29.01	1	1512	N.E. SIDE
104	29.02	2	1512	S.W. SIDE
106	14.01	A	814	1ST FLOOR/REAR UNIT
106	14.02	B	761	1ST FLOOR/FRONT UNIT
106	14.03	C	814	2ND FLOOR/REAR UNIT
106	14.04	D	860	2ND FLOOR/FRONT UNIT

8425

THIS SHEET HAS BEEN REDRAWN USING COMPUTER AIDED DRAFTING/DESIGN (CAD/D) BASED ON THE MAP PREPARED BY WILLIAM C. KISSANE, N.J. L.S. NO 17427. THIS SHEET WAS STAMPED ON APRIL 21, 1986 BY THE OFFICIAL NEW JERSEY DIVISION OF TAXATION AND ASSIGNED SERIAL NUMBER 656 SIGNED IVAN HAFKOWICZ, THE ORIGINAL APPROVED MAP IS ON FILE IN THE OFFICE OF DORAN ENGINEERING, MATTHEW F. DORAN P.E., P.L.S. N.J. L.S. NO 26273.

**TAX MAP**  
**CITY OF BRIGANTINE**  
 ATLANTIC COUNTY, NEW JERSEY  
 SCALE: 1" = 50' JANUARY 1986  
**MATTHEW F. DORAN P.E., P.L.S.**  
 PROFESSIONAL ENGINEER & LAND SURVEYOR  
 NEW JERSEY LICENSE NO. 26273  
 840 NORTH MAIN STREET  
 PLEASANTVILLE NEW JERSEY, 08232  
 TO SHOW CONDITIONS AS OF JAN. 1, 2012