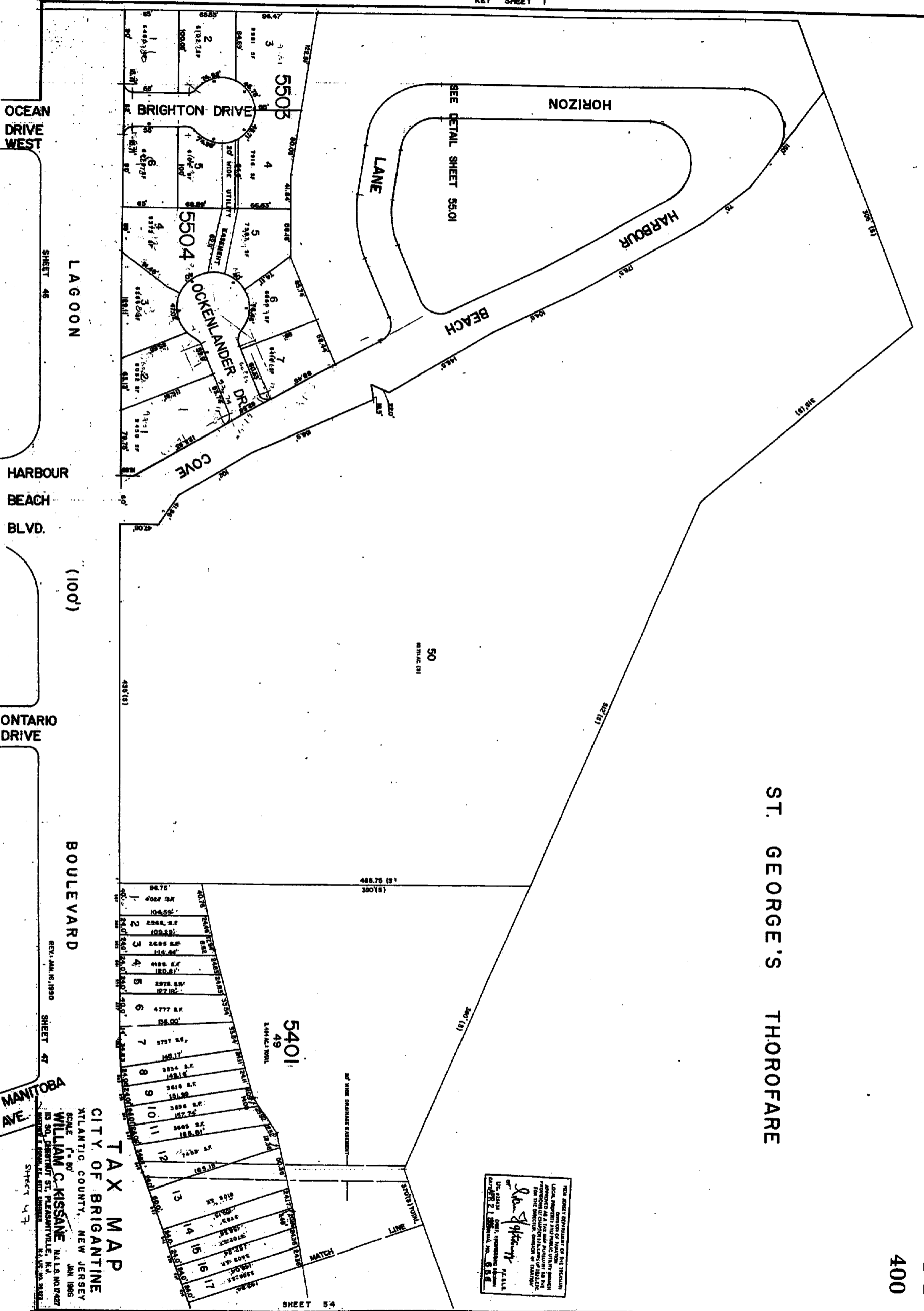


ST. GEORGE'S THOROFARE



NEW BRIGANTINE DIVISION OF THE TREASURY
 LOCAL PROPERTY AND PUBLIC UTILITY TAXES
 APPROVED AS A TAX MAP PURSUANT TO THE
 PROVISIONS OF THE TAX MAPS ACT, R.S. 17:27
 FOR THE DISTRICT OF ST. GEORGE'S THOROFARE
 BY
John S. Kipp
 COUNTY CLERK
 JAN 1986
 COUNTY OF BRIGANTINE, N.J.

TAX MAP

CITY OF BRIGANTINE
 ATLANTIC COUNTY, NEW JERSEY
 WILLIAM C. KISSANE
 N.J. L.S. NO. 17427
 JAN 1986

REV. JAN. 16, 1980
 SHEET 47

MANITOBA AVE

ONTARIO DRIVE

BOULEVARD

(100')

HARBOUR BEACH BLVD.

OCEAN DRIVE WEST

LAGOON

SHEET 46