

38TH ST. SOUTH

ST. SOUTH

SOUTH

SOUTH

SOUTH

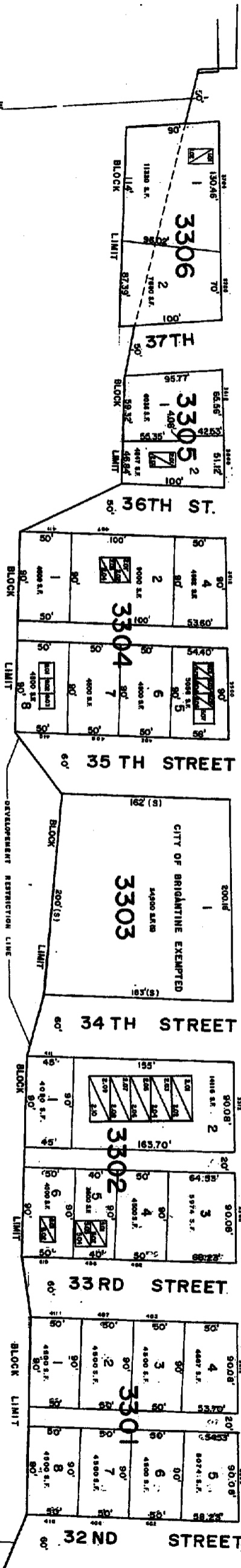
SOUTH

SOUTH

OCEAN

(80')

AVENUE



KEY SHEET 2

APPROXIMATE NEAR HIGH WATER LINE AS LOCATED JAN 1988

SEE KEY SHEET 2

ATLANTIC

OCEAN

NEW JERSEY DEPARTMENT OF THE TREASURY  
 DIVISION OF TAXATION  
 NOTICE: This plat is a preliminary plat and is subject to the provisions of Chapter 174, Laws of 1974, C.D.E. FOR THE DIRECTION, CONTROL OR REGULATION OF THE DIVISION OF TAXATION.

*Wm. C. Kissane*  
 WILLIAM C. KISSANE, ATTORNEY AT LAW  
 100 WEST WASHINGTON ST., NEWARK, N.J. 07102  
 PHONE 201-981-1111

NEW JERSEY DEPARTMENT OF THE TREASURY  
 DIVISION OF TAXATION  
 NOTICE: This plat is a preliminary plat and is subject to the provisions of Chapter 174, Laws of 1974, C.D.E. FOR THE DIRECTION, CONTROL OR REGULATION OF THE DIVISION OF TAXATION.

*Wm. C. Kissane*  
 WILLIAM C. KISSANE, ATTORNEY AT LAW  
 100 WEST WASHINGTON ST., NEWARK, N.J. 07102  
 PHONE 201-981-1111

ATLANTIC COUNTY, NEW JERSEY  
 TAX MAP  
 377  
 WILLIAM C. KISSANE, ATTORNEY AT LAW  
 100 WEST WASHINGTON ST., NEWARK, N.J. 07102  
 PHONE 201-981-1111