

TWENTY EIGHTH (60') STREET SOUTH

TWENTY SEVENTH (60') STREET SOUTH

TWENTY SIXTH (60') STREET SOUTH

TWENTY FIFTH (60') STREET SOUTH

TWENTY STREET FOURTH SOUTH

TWENTY STREET THIRD SOUTH

BONITA

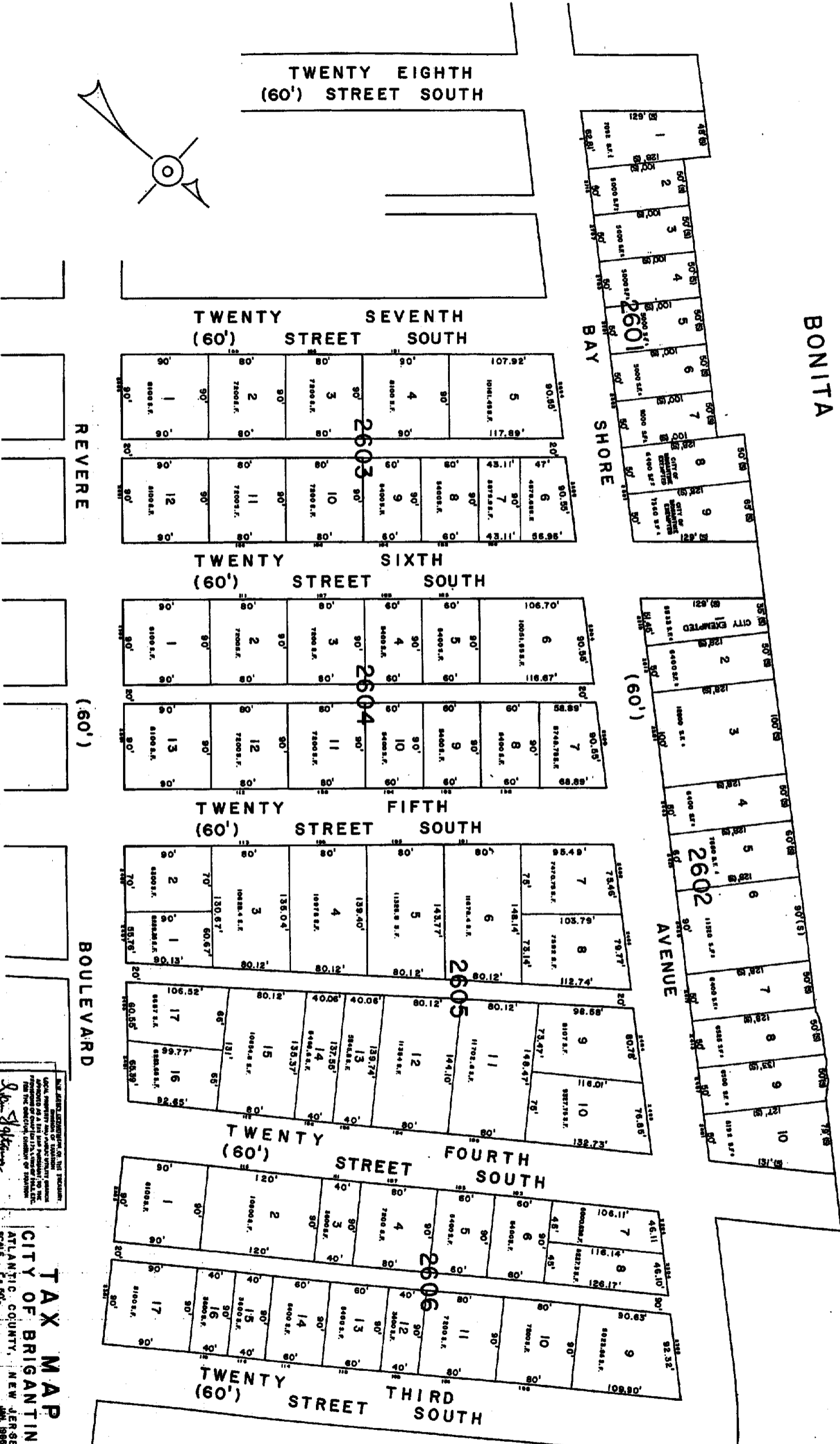
TIDEWAY

BAY SHORE

AVENUE

REVERE

BOULEVARD



LOCAL OFFICE: ATLANTIC COUNTY, NEW JERSEY  
 COUNTY OFFICE: ATLANTIC COUNTY, NEW JERSEY  
 DATE: SEP 23, 1983  
 REV: JAN 16, 1980  
 SCALE: 1" = 60'  
 DRAWN BY: [Signature]  
 CHECKED BY: [Signature]

**TAX MAP**  
 CITY OF BRIGANTINE  
 ATLANTIC COUNTY, NEW JERSEY  
 WILLIAM C. KISSANE, N.J. LICENSED SURVEYOR  
 1000 CHESTNUT ST., PHILADELPHIA, PA. 19107